

# **How big a solar panel should I use for a 1100W water pump inverter**





## Overview

---

The Solar Water Pump Sizing Calculator is a tool designed to calculate the solar panel and battery requirements for a water pump. This calculator is particularly useful for individuals who rely on solar power to pump water for irrigation, livestock, or other purposes. By providing the required input data, users.

To use the Solar Water Pump Sizing Calculator, users must input the following data: 1. Water Flow Rate: The rate at which water flows from the pump in.

The Solar Water Pump Sizing Calculator uses the following formula to calculate the solar panel wattage and battery capacity: 1. Panel Wattage = (Water Flow.

Let's say you want to pump water from a depth of 50 feet at a rate of 5 GPM using a 12V pump that is 70% efficient. The region receives an average of 6 hours.

The Solar Water Pump Sizing Calculator is an essential tool for individuals who rely on solar power to pump water. By providing the required input data, users can.

Typically, 100 to 375-watt panels are used, depending on the pump's specifications and whether it's single-phase or three-phase. Proper sizing ensures efficient operation and longevity of the pump. How much solar power does a water pump need?

First, you need to know the pump's power requirement, which is typically measured in watts (W). Divide the pump's wattage by the average peak sunlight hours your location receives daily. For example, if your pump requires 1500W and you get 5 sunlight hours per day, you would need at least a 300W solar panel.

What is a solar water pump sizing calculator?

The Solar Water Pump Sizing Calculator is an essential tool for individuals who rely on solar power to pump water. By providing the required input data, users can accurately calculate the minimum solar panel wattage and battery



capacity required to meet their water pumping needs.

How do I choose a solar panel for my water pump?

The power requirement of your water pump is one of the most critical factors in determining the type of solar panel you need. The power requirement is usually measured in watts (W) and depends on factors such as: Pump Capacity: The amount of water you need to pump per day. Head Height: The vertical distance the water needs to be lifted.

What size solar inverter do I Need?

A 4.5 kW array (or ten 450-watt solar panels) would just about cover your consumption. The type of solar panels you choose can also impact the size of the inverter you need. Different types of solar panels have different wattage ratings and efficiency levels. The three main types of solar panels are monocrystalline, polycrystalline, and thin film.

How many solar panels does a well pump need?

3.81 kW 250 watts = 18 panels Based on our calculations and real-world conditions, you would need approximately 18 solar panels, each rated at 300 watts, to sufficiently power your well pump while accounting for various efficiency losses. Understanding the energy needs of your water pump is critical.

How much solar power does an AC pump need?

Here's some estimates on solar power for an AC pump - this varies depending on what kind of system you get but its a start! For a 1/2 horsepower pump, you'll need about eight solar panels or 800 watts of power.



## How big a solar panel should I use for a 1100W water pump inverter

---



### Solar Water Pump Sizing Calculator

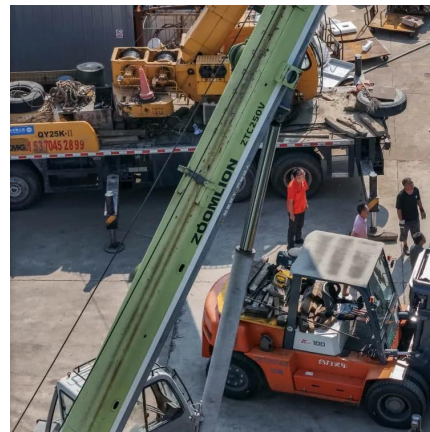
The Solar Water Pump Sizing Calculator is an essential tool for individuals who rely on solar power to pump water. By providing the required input data, users can accurately calculate the ...

[WhatsApp](#)

### Solar Water Pumps: The Ultimate Guide (Sizing, Cost & Installation)

The definitive guide to solar water pumps. We cover how they work, how to size the right panels and pump for your project, costs, and installation. Use our interactive calculator to ...

[WhatsApp](#)



### [How Many Panels Do You Need To Run A Solar Pump?](#)

For a 1/2 horsepower pump, you'll need about eight solar panels or 800 watts of power. If you need a larger system of up to 100 horsepower, you'll require around 320 panels (each 375 ...

[WhatsApp](#)



### [What Size Solar Pump Do I Need For My Pond?](#)

Today's question is, "What size solar pump do I need for my pond?" So the size of the solar pump you need to maintain water in your pond is largely going to depend on how much water



you're ...

[WhatsApp](#)



### [Calculating Solar Panel Needs for Water Pumping: A...](#)

Understanding Your Water Pump To properly size a solar system, you must first understand the power requirements of your pump. Pump Wattage The most critical piece of information is the ...

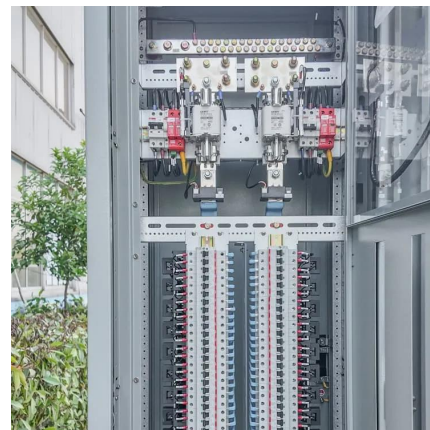
[WhatsApp](#)



### **How to Size a Solar Pump Inverter for Your Water Pumping Needs**

By following these steps, you can size a solar pump inverter that meets your specific water pumping needs and ensures reliable and efficient operation of your solar pump system.

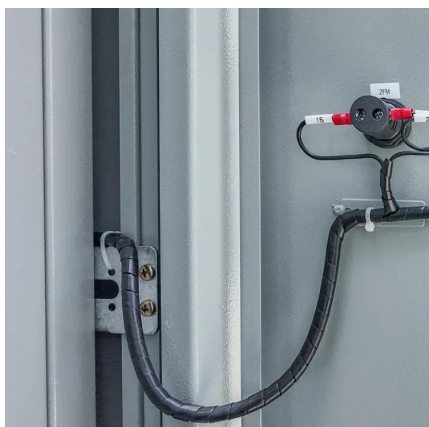
[WhatsApp](#)



### [The Complete Off Grid Solar System Sizing Calculator](#)

Using your daily energy usage and Peak Sun Hours, and assuming a system efficiency of 70%, the calculator estimates the Wattage required for your off-grid solar system's ...

[WhatsApp](#)





## What Size Solar Panel for Well Pump: Comprehensive Sizing Guide

Based on our calculations and real-world conditions, you would need approximately 18 solar panels, each rated at 300 watts, to sufficiently power your well pump ...

[WhatsApp](#)



## How Many Panels Do You Need To Run A Solar Pump? , Demystifying Solar

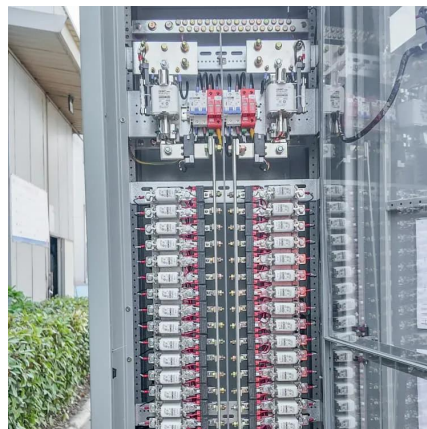
For a 1/2 horsepower pump, you'll need about eight solar panels or 800 watts of power. If you need a larger system of up to 100 horsepower, you'll require around 320 panels (each 375 ...

[WhatsApp](#)

## How To Size A Solar Inverter in 3 Easy Steps

Choose an inverter that has a surge watt rating equal to or greater than this value. As for voltage drop, check the wire length between your solar panels and the batteries. If the wire length is ...

[WhatsApp](#)



## How Many Solar Panels Do You Need to Run a Water Pump?

4 days ago · To run a water pump on solar, multiply the pump's power by 1.5 to calculate the total solar panel wattage needed. For example, a 1000W pump requires at least 1500W of solar ...

[WhatsApp](#)



## Contact Us

---

For catalog requests, pricing, or partnerships, please visit:  
<https://www.straighta.co.za>