

# **How big a photovoltaic panel should I use with a 3 2v battery**





## Overview

---

Note: If you already have a solar panel and want to know how long it will take to charge your battery, use our solar battery charge time calculator.

### What size solar panel to charge 12V battery?

You want a solar panel that will charge your battery in 16 peak sun hours. To find out what size solar panel you need, you'd simply plug the following into the calculator: Turns out, you need a 100 watt solar panel to charge a 12V 100Ah lithium battery in 16 peak sun hours with an MPPT charge controller.

### What is a solar panel and Battery sizing calculator?

A Solar Panel and Battery Sizing Calculator is an invaluable tool designed to help you determine the optimal size of solar panels and batteries required to meet your energy needs. By inputting specific details about your energy consumption, this calculator provides tailored insights into the solar setup that will best suit your requirements.

### What size solar battery do I Need?

The size of the solar battery you need will depend on the size of your home — specifically, how many bedrooms it has. To work out what size battery you'll need, you can start by calculating your electricity usage. Look at either your smart meter or your monthly energy bill, which will tell you how much you use on average.

### How many watts a solar panel to charge a 24v battery?

You need around 600-900 watts of solar panels to charge most of the 24V lithium (LiFePO4) batteries from 100% depth of discharge in 6 peak sun hours with an MPPT charge controller. Full article: [What Size Solar Panel To Charge 24v Battery?](#)

### What Size Solar Panel To Charge 48V Battery?

.



What size battery should a 10 kW solar system have?

10 kW solar system with a battery — The ideal size solar battery for a 10 kWp solar panel system is 20–21 kW, as it'll be able to make sure the battery is properly charged throughout the day. Which solar products are you interested in?

.

How many watts a solar panel to charge a lithium battery?

You need around 1600-2000 watts of solar panels to charge most of the 48V lithium batteries from 100% depth of discharge in 6 peak sun hours with an MPPT charge controller. What Size Solar Panel To Charge 120Ah Battery?



## How big a photovoltaic panel should I use with a 3 2v battery

---



### How to Calculate Solar Panel and Battery Size for Your Energy ...

Unlock the secrets to effectively calculating solar panel and battery sizes with our comprehensive guide. This article demystifies the technical aspects, offering step-by-step ...

[WhatsApp](#)

### Solar Battery Size Calculator: What size battery do I need?

What size solar panel array do you need for your home? And if you're considering battery storage, what solar battery size would be most appropriate? This article includes tables ...

[WhatsApp](#)



### 3.7v Battery and different solar panel voltage for recharging.

Additional info, battery if from a cellphone, it ranges from 3.5v to 4.2v. Battery has protection for over-discharge and overcharge. All solar panels have a diode. Battery will power ...

[WhatsApp](#)

### [What Size Solar Battery Do You Need? A 2025 Guide](#)

Generally speaking it is better to buy an oversized solar battery, but only as long as your solar panel system is big enough. Otherwise



you'll want a smaller storage battery, ...

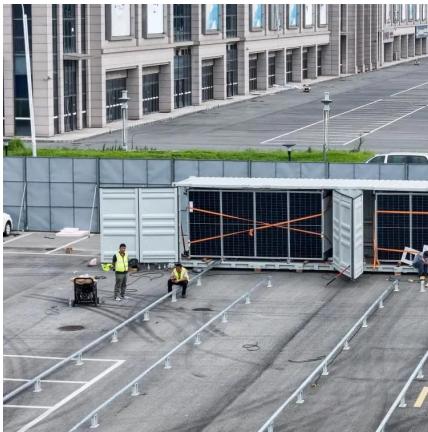
[WhatsApp](#)



### How to Calculate Solar Panel, Battery, and Inverter Size

By accurately calculating your energy needs, desired backup time, and considering factors like system efficiency and future expansion, you can determine the appropriate sizes for your ...

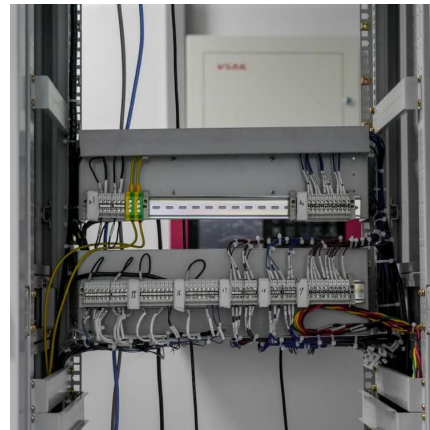
[WhatsApp](#)



### [Solar Battery Bank Sizing Calculator for Off-Grid](#)

Our solar battery bank calculator helps you determine the ideal battery bank size, watts per solar panel, and the suitable solar charge controller. If you choose to build an off-grid system, it's ...

[WhatsApp](#)



### What Size Solar Panel To Charge 100Ah Battery? (Calculator)

To adequately calculate the size of the solar panel to fully charge any 100Ah battery, we have to take a 2-step approach. Calculate how much juice solar panels have to add to the battery. This ...

[WhatsApp](#)







### [General advice on building a solar garden led lamp](#)

Modern solar garden lights use the 2V solar panel as the light sensor to replace an old LDR, and use a Ni-MH battery (it has no Lithium in it) to replace an old Ni-Cad battery. ...

[WhatsApp](#)



## Contact Us

---

For catalog requests, pricing, or partnerships, please visit:  
<https://www.straighta.co.za>