

How big a lithium battery can be used with an inverter





Overview

So I have made it easy for you, use the calculator below to calculate the battery size for 200 watt, 300 watt, 500 watt, 1000 watt, 2000 watt, 3000 watt, 5000-watt inverter .

Note!The battery size will be based on running your inverter at its full capacity
Assumptions 1. Modified sine wave inverter efficiency: 85% 2. Pure sine wave inverter efficiency:90% 3. Lithium Battery:100% Depth of discharge limit 4. lead-acid.

To calculate the battery capacity for your inverter use this formula Inverter capacity (W)*Runtime (hrs)/solar system voltage = Battery Size*1.15 Multiply the result by 2 for lead-acid type.

You would need around 24v150Ah Lithium or 24v 300Ah Lead-acid Batteryto run a 3000-watt inverter for 1 hour at its full capacity .

Here's a battery size chart for any size inverter with 1 hour of load runtime
Note! The input voltage of the inverter should match the battery voltage. (For example 12v battery for 12v.

Can a lithium battery run a large inverter?

Bottom line, if you want to run large inverter loads above 1000w on a lithium battery, make sure you choose an lithium battery that is designed for larger inverters or a system that can be paralleled safely with active balancing between the connected batteries.

What is a lithium battery for inverter?

Lithium offers unmatched performance, a longer lifespan, and better efficiency than traditional batteries. Whether you're setting up a home backup system, solar power solution, or mobile energy unit, this guide will walk you through everything you need to know about lithium batteries for inverters.
Part 1.

How do I choose a lithium battery for inverter use?



When selecting a lithium battery for inverter use, it is essential to understand the key specifications: Voltage (V): Most inverter systems use 12V, 24V, or 48V batteries. Higher voltage systems are more efficient for larger power loads. Capacity (Ah or Wh): Amp-hours or Watt-hours indicate how much energy the battery can store and deliver.

How do I choose the right inverter size for my 200Ah lithium battery?

When it comes to choosing the right inverter size for your 200Ah lithium battery, there are a few factors you'll need to consider. The first is the power needs of the devices you plan on running off the inverter. Take into account their wattage requirements and how many devices will be connected at once.

Can a 1000 watt inverter run a 100 Ah lithium battery?

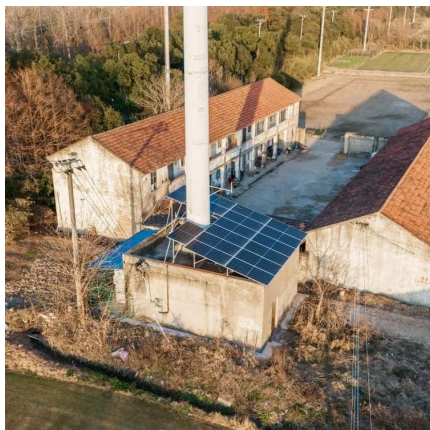
In reality, factors such as inverter efficiency and battery discharge characteristics might affect the actual run time. When pairing a 100 Ah lithium battery with a 1000 watt inverter, it is crucial to ensure compatibility to achieve optimal performance.

Can lithium batteries be used in inverter-powered systems?

Lithium batteries can be used in a wide range of inverter-powered systems: Home power backup: Provides energy during power outages and ensures critical appliances stay running. Solar energy storage: Ideal for storing daytime solar generation for nighttime use.



How big a lithium battery can be used with an inverter



Can You Use A Noco 10 Battery Charger While Connected To An Inverter?

1 day ago· The NOCO Genius 10 is ideal for pairing with inverters due to its advanced microprocessor control, which prevents overcharging. Its 10-amp output efficiently charges ...

[WhatsApp](#)

Is my inverter too big? : r/SolarDIY

So, your inverter can technically be run off a single battery; but you need large cables between the battery and inverter due to the large current it can draw. You are your battery to make sure ...

[WhatsApp](#)



What Size Inverter Can I Run Off a 200Ah Lithium Battery?

Calculate watt-hours by multiplying voltage by amp-hours (e.g., $12V \times 200Ah = 2400Wh$). Select an inverter with continuous power slightly below the battery's max safe ...

[WhatsApp](#)



Understanding Battery Capacity and Inverter Compatibility

When pairing a 100 Ah lithium battery with a 1000 watt inverter, it is crucial to ensure compatibility to achieve optimal performance.



Lithium batteries typically offer better ...

[WhatsApp](#)



[How Big of a Battery Do I Need to Run a 2000W Inverter?](#)

To run a 2000W inverter, you typically need a battery with at least 200Ah capacity if you plan to run it for one hour. This calculation assumes a 100% efficiency rate, but in ...

[WhatsApp](#)



What Size Inverter Do You Need for Your Home? , Renogy US

3. Renogy Inverter Charger Do you need a dependable backup power solution for homes with both grid-tied or off-grid solar systems? Renogy Inverter Charger will be your go-to partner. It ...

[WhatsApp](#)



[What Size Lithium Battery Do I Need for a 5kW Inverter?](#)

To power a 5kW inverter, you typically need a lithium battery capacity of around 200Ah at 48V or 400Ah at 24V. This capacity ensures sufficient energy storage for typical usage scenarios, ...

[WhatsApp](#)





[Can Lithium Batteries Work With Any Type of Inverter?](#)

When setting up solar energy systems or home energy storage, a common question arises: Are lithium batteries compatible with all inverters? The short answer is no - proper ...

[WhatsApp](#)



[Lithium Batteries: What Size Inverter Can I Use?](#)

Bottom line, if you want to run large inverter loads above 1000w on a lithium battery, make sure you choose a lithium battery that is designed for larger inverters or a system that can be ...

[WhatsApp](#)

Complete Guide to Batteries for 110V 5kw Inverter System

Introduction You have the batteries and inverters but don't know how to connect them, right? More simply, it is the case where you have a 5kW 110V Inverter but don't know ...

[WhatsApp](#)



Calculate Battery Size For Any Size Inverter (Using Our Calculator)

So I have made it easy for you, use the calculator below to calculate the battery size for 200 watt, 300 watt, 500 watt, 1000 watt, 2000 watt, 3000 watt, 5000-watt inverter

[WhatsApp](#)



Compatibility of Lithium-Ion Batteries with Existing Inverters

Before you decide to pair a lithium-ion battery with your existing inverter, it's essential to consider several factors. These include the inverter's voltage, charging algorithm, and overall ...

[WhatsApp](#)



Contact Us

For catalog requests, pricing, or partnerships, please visit:
<https://www.straighta.co.za>