

How big a battery should I use for a 3kw 12v inverter





Overview

Note! The battery size will be based on running your inverter at its full capacity
Assumptions 1. Modified sine wave inverter efficiency: 85% 2. Pure sine wave inverter efficiency: 90% 3. Lithium Battery: 100% Depth of discharge limit 4. lead-acid.

To calculate the battery capacity for your inverter use this formula $\text{Inverter capacity (W)} \times \text{Runtime (hrs)} / \text{solar system voltage} = \text{Battery Size} \times 1.15$ Multiply the result by 2 for lead-acid type.

Related Posts 1. What Will An Inverter Run & For How Long?

2. Solar Battery Charge Time Calculator 3. Solar Panel Calculator For Battery: What Size Solar Panel Do I Need?

I hope this short guide was helpful to you, if you have any queries Contact us do drop a.

You would need around 24v 150Ah Lithium or 24v 300Ah Lead-acid Battery to run a 3000-watt inverter for 1 hour at its full capacity .

Here's a battery size chart for any size inverter with 1 hour of load runtime
Note! The input voltage of the inverter should match the battery voltage. (For example 12v battery for 12v.

You need 4 Lithium batteries in series to run a 3,000W inverter. If you use lead-acid batteries, you need 12 batteries with 4 in series and 3 strings in parallel.
Can I run a 3000 watt inverter on one battery?

How many batteries does a 3000W inverter need?

Then we can get the number of batteries by taking the total capacity/battery capacity. For example, there is an existing battery with a rated voltage of 12v. $3000/12=250A$, and if the usage time is 5 hours, we can get the capacity of 1250Ah by calculation, so the 3000W inverter needs to be equipped with 10 pieces of 12v 125Ah batteries.

What voltage should a 12V inverter run on?



The input voltage of the inverter should match the battery voltage. (For example 12v battery for 12v inverter, 24v battery for 24v inverter and 48v battery for 48v inverter Summary What Will An Inverter Run & For How Long?

.

Which battery bank is best for a 24V 3000W inverter?

To keep your batteries operating safely and reliably, it is always recommended to go for a somewhat larger battery bank- generally, for lead-acid batteries 6 x 100Ah 24V battery Or 12 x 100Ah 12V battery is the smallest battery bank recommended for the 24V 3000W inverter.

What size wire do I need for a 3000 watt inverter?

In this case, you need to make sure you have the right size AWG cables. The most common size cable for a 3000 watt inverter is 4/0 AWG. It is not a set rule as the gauge of wire changes depending on length. To be honest, 3000 Watt inverters are pretty big so you will need a minimum of 300Ah battery capacity in my experience.

How many amps can a 3KW battery inverter run?

Battery cable current greater than 150 amps is tough requiring a lot of attention to details. A 3kW 12v inverter is pushing a max cable current of 250 to 300 amps. That is not impossible but very difficult. You have to watch every fraction of milliohm of resistance for terminals, clamping connections, current shunt, and cables.

How many amps does a 12V 3000 watt inverter draw?

For a 12V 3000 watt inverter: $3000 \text{ watts} / 12 \text{ volts} = 250 \text{ amps}$. This means that when fully loaded (3000 watts), it will draw 250 amps from the batteries (ignoring things like efficiency). So, you would need batteries with a capacity to meet a discharge rate (C-Rate) that allows the inverter to draw 250 amps safely.



How big a battery should I use for a 3kw 12v inverter



Ultimate Guide to the 3kW LF Inverter: Power, Battery Sizing, ...

Blown fuse or tripped breaker - Always verify that the fuse near the battery is intact and properly rated for a 3kW inverter (usually 300A for 12V, 150A for 24V).

[WhatsApp](#)

How to Size a Battery? Battery Bank Capacity Size Calculator

Keep in mind that batteries are always rated in Ah. If you are not OK with the manual calculations, you may use the battery bank size calculator right after the solved example for battery size ...

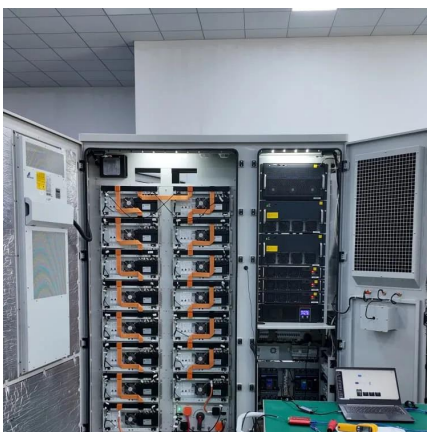
[WhatsApp](#)



How Many Batteries For a 3000W Inverter , Battery Sizing ...

For a 12V 3000W inverter: You will need at least batteries with a total capacity of 1250 Ah 12V, or 15 kWh. For a 24V 3000W inverter: You will need at least batteries with a total ...

[WhatsApp](#)



Wire gauge / fuse size help for connecting inverter (3000w) to

What wire gauge would you use for connecting the inverter to the batteries/rack busbar? What size of Class T fuse would you use on the positive



wire in question 1 (between inverter and ...

[WhatsApp](#)



[Solar Battery Size Guide: kWh, Inverter & Runtime](#)

2 days ago · Size your solar battery using load profile, critical loads, efficiency and DoD. Calculator matches kWh, inverter and runtime for code-compliant installs.

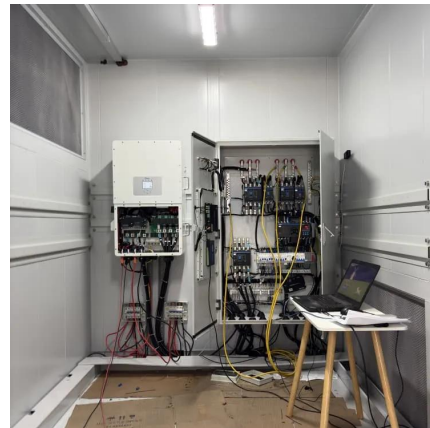
[WhatsApp](#)



[How to Calculate Battery Size for Inverters of Any Size](#)

Learn how many batteries for a 3000-watt inverter or a 1kVA inverter and more, right here at The Inverter Store. In order to size a battery bank, we take the hours needed to continuously run ...

[WhatsApp](#)



Calculate Battery Size For Any Size Inverter (Using Our Calculator)

To recharge your battery from time to time you would need the right size solar panel to do the job! Read the below article to find out the suitable solar panel size for your battery bank

[WhatsApp](#)





How Many Batteries For A 3000-Watt Inverter? Free Calculator

How many batteries do we need to power a 3000-watt inverter? The number of batteries required to power an inverter depends on the load or the amount of electricity being ...

[WhatsApp](#)



[Batteries for a 3000 Watt Inverter: A Complete Guide](#)

Here's a handy chart to help you quickly calculate how long a 3000W inverter will run on 12V batteries. I have included multiple maximum runtimes based on the number of watts drawn ...

[WhatsApp](#)

Ultimate Guide to the 3kW LF Inverter: Power, Battery Sizing, and Use

Blown fuse or tripped breaker - Always verify that the fuse near the battery is intact and properly rated for a 3kW inverter (usually 300A for 12V, 150A for 24V).

[WhatsApp](#)



Contact Us

For catalog requests, pricing, or partnerships, please visit:
<https://www.straightta.co.za>