

# **How big a battery cabinet should I use for a 200ah battery**





## Overview

---

Minimum cabinet height = Rack height (to top of rail) + Battery height + Space above battery (12" ideal) + Charger height + 6" (for space above charger) Chargers need room to breathe and batteries need extra room above for maintenance (watering and testing).What size battery bank do I Need?

Required Size of Battery Capacity Bank = 999 Ah (Almost 1000Ah) This is the minimum battery bank capacity size you need to run a 900Wh load daily for 3 hours. Related Posts: How to Calculate the Battery Charging Time & Battery Charging Current?

How to Connect Automatic UPS / Inverter to the Home Supply System?

.

How to calculate battery capacity in AH?

Battery Capacity in Ah = (Energy Demand in Wh x Autonomy Days x Backup Hours) / DoD in % x DC Voltage Based on our example data: Battery Capacity in Ah = (900Wh x 2 Days x 3 Hours) / (50% x 12 Volts) Required Size of Battery Capacity Bank = 999 Ah (Almost 1000Ah).

How to calculate battery capacity?

Battery Capacity in Ah = (900Wh x 2 Days x 3 Hours) / (50% x 12 Volts)  
Required Size of Battery Capacity Bank = 999 Ah (Almost 1000Ah) This is the minimum battery bank capacity size you need to run a 900Wh load daily for 3 hours. Related Posts: How to Calculate the Battery Charging Time & Battery Charging Current?

.

Should a 200Ah battery bank be paired with an alternator?

This gets the bank recharged as quickly as possible, minimizing the engine running time and the fuel needed to replenish the batteries. Thus, a boat with



a 200Ah battery bank should be paired with an alternator that maxes-out at 50–80A. What does a completed energy budget look like?

.

How do you calculate a battery bank size?

The size of a battery bank is calculated based on your energy needs and system specifications. Here's the formula: Here are some standard battery bank sizes and their typical applications: What is depth of discharge (DoD)?

Depth of discharge is the percentage of the battery's capacity that is used.

What size alternator for a 400Ah battery bank?

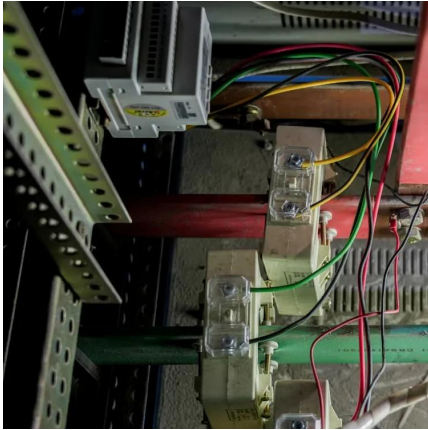
This 160A Balmar 97-Series alternator would be a good size for a 400Ah battery bank using AGM batteries (with a 40% charge acceptance rate). Who can use an energy budget?

If you live off the grid, onboard a cruising sailboat or perhaps in an isolated mountain cabin, knowing your energy consumption is very useful.



## How big a battery cabinet should I use for a 200ah battery

---



### [What size charger do I need for a 200Ah battery?](#)

What size of charge controller do I need for 200Ah battery? You need around 610 watts of solar panels to charge a 12V 200Ah lithium battery from 100% depth of discharge in 5 peak sun ...

[WhatsApp](#)

### [What Size Inverter Can I Run Off a 200Ah Battery?](#)

When determining what size inverter can be run off a 200Ah battery, it's essential to consider both the power requirements of your devices and the characteristics of the battery itself. A typical ...

[WhatsApp](#)



### **Battery Enclosures & Cabinets**

This product is perhaps more commonly called a "solar battery box" but is also referred to as a "pole mount battery box". Some battery boxes are large enough to be considered battery ...

[WhatsApp](#)

### [Looking for a battery box for 200Ah LiFePo4 battery](#)

If anyone is looking for a battery box for Power Queen, Chins, Renogy, etc 200Ah battery - go to harbor freight and buy the 4 piece toolbox set.





The largest of the toolboxes fits ...

[WhatsApp](#)



### **How to Size a Battery Bank for a North American Off-Grid Cabin?**

Installing a battery bank size for your off-grid cabin is not only a matter of throwing together some batteries and it's about calculating your energy needs, adjusting these numbers ...

[WhatsApp](#)



### **[How to Right-Size Your Battery Storage System](#)**

Proper battery sizing depends on several factors: how much electricity is needed to keep devices powered, how long those devices will rely on stored energy, and the actual capacity of each ...

[WhatsApp](#)



### **How Long Will a 200Ah Battery Last (2025 Update) - LiTime-AU**

There's no one-size-fits-all answer to how long a 200Ah battery will last. Its runtime is influenced by various factors, including battery capacity, voltage, depth of discharge (DoD), ...

[WhatsApp](#)





### [What Size of Inverter Is Good for a 200Ah Battery?](#)

Choosing the right size inverter for a 200Ah battery is crucial for ensuring efficient power delivery and preventing system overloads. Typically, an inverter rated between 1000W ...

[WhatsApp](#)



### [Battery Box size? , Forest River Forums](#)

200 ah "lithium" batteries can vary in size so you will need to check each manufacturer's published measurements. They are definitely too large for "factory standard" ...

[WhatsApp](#)



### **How to Size a Battery? Battery Bank Capacity Size Calculator**

In this post, we will show how to find the appropriate size of battery bank capacity in Ah (Ampere-hours) as well as the required number of batteries according to our needs. Keep in mind that ...

[WhatsApp](#)



### **Choosing the Right Battery Storage Cabinet: A Comprehensive ...**

This comprehensive guide provides a detailed overview of safety, design, compliance, and operational considerations for selecting and using lithium-ion battery storage ...

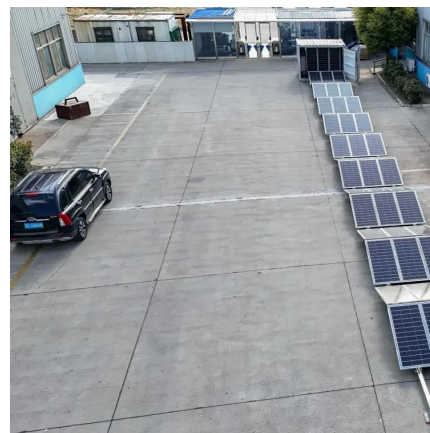
[WhatsApp](#)



### [How to Choose the Right Battery Cabinet for Your Needs](#)

If you need to store batteries for home, a workshop, or a business, know what to look for in battery storage units. Selecting the right cabinet ensures safety, efficiency, and ...

[WhatsApp](#)



### **Tips for Designing Battery Cabinets/Enclosures , SBS Battery**

Chargers need room to breathe and batteries need extra room above for maintenance (watering and testing). To calculate the minimum height of the cabinet, use the general formula above. ...

[WhatsApp](#)

## **Contact Us**

For catalog requests, pricing, or partnerships, please visit:  
<https://www.straighta.co.za>