

How about powering a communication base station





Overview

What are the components of a base station?

Power Supply: The power source provides the electrical energy to base station elements. It often features auxiliary power supply mechanisms that guarantee operation in case of lost or interrupted electricity, during blackouts. **Baseband Processor:** The baseband processor is responsible for the processing of the digital signals.

How much power does a cellular base station use?

This problem exists particularly among the mobile telephony towers in rural areas, that lack quality grid power supply. A cellular base station can use anywhere from 1 to 5 kW power per hour depending upon the number of transceivers attached to the base station, the age of cell towers, and energy needed for air conditioning.

Why are base stations important in cellular communication?

Base stations are important in the cellular communication as it facilitate seamless communication between mobile devices and the network communication. The demand for efficient data transmission are increased as we are advancing towards new technologies such as 5G and other data intensive applications.

How does a base station work?

It usually connects the device to other networks or devices through a dedicated high bandwidth wire of fiber optic connection. Base stations typically have a transceiver, capable of sending and receiving wireless signals; Otherwise if they only send the trailer it will be considered a transmitter or broadcast point only.

How can the electronic industry reduce power requirements for base stations?

As a result, the electronic industry is exploring new methods to reduce the



power requirements for the electronic equipment used in the base stations. The first approach is to make the base stations more tolerant to heat which will then require less power for air conditioning.

How do cellular base stations work?

Most transceivers in the cellular base stations are run by 48 VDC to charge the batteries and power the communication equipment. The air conditioning of the base station runs at 220 VAC. These base stations can be powered by two types of diesel generators.



How about powering a communication base station



Distribution network restoration supply method considers 5G base

In view of the impact of changes in communication volume on the emergency power supply output of base station energy storage in distribution network fault areas, this ...

[WhatsApp](#)

Application of smart power usage on the communication base station

Using intelligent power management technology, it can realize intelligent power supply to communication equipment, providing appropriate power supply according to the actual ...

[WhatsApp](#)



Communication Base Station Smart Hybrid PV Power Supply ...

The Telecom Base Station Intelligent Grid-PV Hybrid Power Supply System helps telecom operators to achieve "carbon reduction, energy saving" for telecom base stations and machine ...

[WhatsApp](#)



Optimizing the power supply design for communication base stations

Comprehensively evaluate various factors and select the most suitable power system design scheme to ensure the stable and reliable



operation of the base station.

[WhatsApp](#)



[Communication Base Station Energy Solutions](#)

Due to harsh climate conditions and the absence of on-site personnel to maintain fuel generators, the company required a reliable solution to ensure the base station's stable operation and ...

[WhatsApp](#)



Multiuser Communications With Movable-Antenna Base Station: ...

Movable antenna (MA) is an innovative technology that facilitates the repositioning of antennas within the transmitter/receiver area to enhance channel conditions and communication ...

[WhatsApp](#)



Optimal configuration of 5G base station energy storage ...

A multi-base station cooperative system composed of 5G acer stations was considered as the research object, and the outer goal was to maximize the net profit over the ...

[WhatsApp](#)





Telecommunication base station system working principle and ...

After the oil engine is working normally, it can provide AC input power to the rectifier module, which will re supply power to the communication equipment and charge the ...

[WhatsApp](#)



The Role of Hybrid Energy Systems in Powering Telecom Base Stations

Discover how hybrid energy systems, combining solar, wind, and battery storage, are transforming telecom base station power, reducing costs, and boosting sustainability.

[WhatsApp](#)



Power Supply Solutions for Wireless Base Stations Applications

Luckily, MORNUSUN has a series of power solutions designed to provide state-of-the-art reliability while also curbing any unnecessary costs related to their installation, application, and ...

[WhatsApp](#)



Power Supply Solutions for Wireless Base Stations Applications

MORNUSUN has designed entire collections of power supplies and related electrical components, which are all known in the industry for their high reliability and quality. In particular, MORNUSUN ...

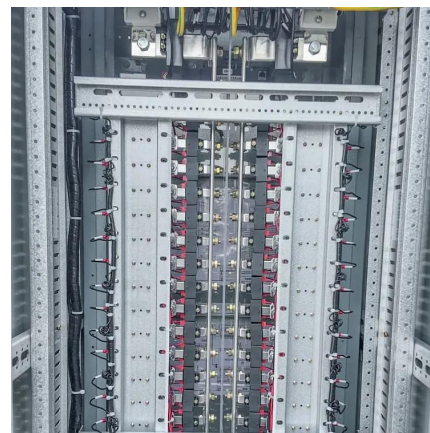
[WhatsApp](#)



AC DC Switching Power Supply for Communication & Networking ...

10 hours ago · Discover how AC DC switching power supplies drive stable, efficient, and compact power solutions for telecom base stations, routers, and 5G networks--ensuring reliable ...

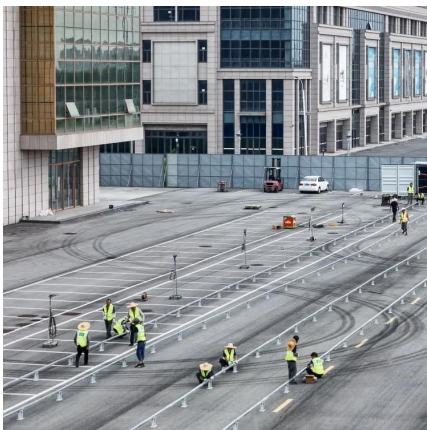
[WhatsApp](#)



Communication Base Station Lead-Acid Battery: Powering ...

In an era where lithium-ion dominates headlines, communication base station lead-acid batteries still power 68% of global telecom towers. But how long can this 150-year-old technology ...

[WhatsApp](#)



Contact Us

For catalog requests, pricing, or partnerships, please visit:
<https://www.straightta.co.za>