

External 48V DC inverter





Overview

What is a 48 volt inverter?

In other words, it is a device that can take current from a bank of batteries (48V) and convert it to the type supplied in the grid to power your appliances and devices. I suggest you use A 24-volt inverter or 36-volt inverter or 48-volt inverter when you need to power appliances over 3000 Watts.

Do you need a 48 volt pure sine power inverter?

When you're in need of consistent power output that boasts efficiency at higher loads, you need an AIMS Power 48-volt pure sine power inverter. [Show More >](#) Create a backup power system with 48-volt pure sine power inverters that are ideal for reliably powering a large range of electronics, tools and appliances.

What is the working temperature of a 48V 5000W inverter?

Working temperature of this 48V 5000W inverter between -10 °C to 50 °C. A 48V power inverter is a device used to convert direct current (DC) electrical power from a 48-volt battery or DC power source into alternating current (AC) power. In terms of functionality, a 48V power inverter typically consists of several key components.

What is a solar power inverter?

With strong durability and high efficiency, the solar power inverters can be chosen from 1000W, 1500W, 2000W and 3000W. They are equipped with AC household outlet and USB charging port, to power your electronics or appliances easily at home or outside.

What is a power inverter used for?

Free and clean energy used as marine power inverter, vehicle power inverter and industrial power inverter and so on. Compact and portable for camping, road trip and ideal use in cars, vessels and for power FAILURE emergencies



and power back-up for home.

What voltages can a 5000W inverter run?

Optional AC output with 100V, 110V, 120V, 220V, 230V, 240V. 5000W modified sine wave power inverter equipped with universal household socket and USB port to meet your multi-needs, most desirable power source on the road. Working temperature of this 48V 5000W inverter between -10 °C to 50 °C.



External 48V DC inverter



10000W Pure Sine Wave Power Inverter DC 12V /24V /48V/ 60V ...

Buy Aecorbir 10000W Pure Sine Wave Power Inverter DC 12V /24V /48V/ 60V to AC 220V for Solar System Solar Panel Home Outdoor RV Camping Smart Car Inverter (48V-220V): Power ...

[WhatsApp](#)

48v Inverter, 48v DC to 120v/220v AC Power Inverter , inverter

High quality yet low price 48V solar power inverter for sale in Inverter . The inverters convert 48 volt DC power to AC home power, available with 110V/120V or 220V/230V/240V for options.

[WhatsApp](#)



[Schneider Electric Conext SW 4048 48VDC Inverter/Charger](#)

Conext SW 3,800 watt 48VDC/120/240VAC Inverter Important Information: The Schneider Electric SW inverters are rated for 240 Volts AC output. When powering 120 Volt devices, the inverter ...

[WhatsApp](#)



EVO-4248SP Split Phase 48V Inverter/Charger , Samlex America

100 Amp DC Input for Solar Charge Controller
Connect a 48V MPPT charge controller directly to the external DC input to seamlessly integrate



solar charging into the EVO(TM)
inverter/charger's ...

[WhatsApp](#)



[48V Pure Sine Wave Power Inverters Collection](#)

Expertly engineered for top-tier efficiency, these inverters transform 48V DC power into reliable AC energy. Perfect for solar setups, off-grid living, and demanding applications, our inverters ...

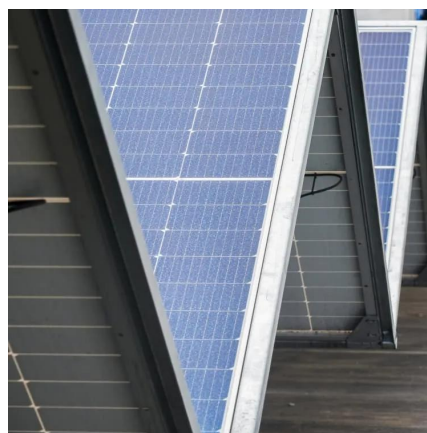
[WhatsApp](#)



AIMS Power 7,000 Watt Modified Sine Inverter, 48V DC to 240V ...

The AIMS Power 7000W Modified Sine Inverter accepts a 48V input and produces 240Vac of modified sine wave AC power. With the AIMS Power industrial grade line, you get a ...

[WhatsApp](#)



[48V, 85A Small Form-Factor Three-Phase Inverter](#)

This reference design demonstrates a 48V DC input, 85ARMS output, three-phase motor drive inverter. The 100V intelligent half-bridge gate driver DRV8162L enables a small size, robust, ...

[WhatsApp](#)





Contact Us

For catalog requests, pricing, or partnerships, please visit:
<https://www.straighta.co.za>