

# Energy storage distance from base station room

制造厂家：上海汇珏科技集团股份有限公司

产品型号：DPF- -48V/500A-G-S

智能监控单元质保期：10年

浪涌保护器质保期：10年

断路器质保期：10年





## Overview

---

In Section 15.5 of NFPA 855, we learn that individual ESS units shall be separated from each other by a minimum of three feet unless smaller separation distances are documented to be adequate and approved by the authority having jurisdiction (AHJ) based on large-scale fire testing. How much energy can a ESS unit store?

Individual ESS units shall have a maximum stored energy of 20 kWh per NFPA Section 15.7. NFPA 855 clearly tells us each unit can be up to 20 kWh, but how much overall storage can you put in your installation?

That depends on where you put it and is defined in Section 15.7.1 of NFPA 855.

How far apart should storage units be positioned?

Therefore, if you install multiple storage units, you have to space them three feet apart unless the manufacturer has already done large-scale fire testing and can prove closer spacing will not cause fire to propagate between adjacent units.

What is the battery energy storage system guidebook?

NYSERDA published the Battery Energy Storage System Guidebook, most-recently updated in December 2020, which contains information and step-by-step instructions to support local governments in New York in managing the development of residential, commercial, and utility-scale BESS in their communities.

What are the energy storage operational safety guidelines?

In addition to NYSERDA's BESS Guidebook, ESA issued the U.S. Energy Storage Operational Safety Guidelines in December 2019 to provide the BESS industry with a guide to current codes and standards applicable to BESS and provide additional guidelines to plan for and mitigate potential operational hazards.



What is a battery energy storage system?

Telkes In recent years, Battery Energy Storage Systems (BESS) have become an essential part of the energy landscape. With a growing emphasis on renewable energy sources like solar and wind, BESS plays a crucial role in stabilizing the power grid and ensuring a reliable supply of electricity.

Are battery energy storage systems the future of grid stability?

Battery Energy Storage Systems represent the future of grid stability and energy efficiency. However, their successful implementation depends on the careful planning of key site requirements, such as regulatory compliance, fire safety, environmental impact, and system integration.



## Energy storage distance from base station room

---



### [6 Battery Energy Storage Systems -- Lithium UpCodes](#)

This section applies to battery energy storage systems that use any lithium chemistry (BESS-Li). Unoccupied structures housing BESS-Li must comply with NFPA 855, except where modified ...

[WhatsApp](#)

### [National Fire Protection Association BESS Fact Sheet](#)

The table below, which summarizes information from a 2019 Fire Protection Research Foundation (FPRF) report, "Sprinkler Protection Guidance for Lithium-Ion Based Energy Storage ...

[WhatsApp](#)



### **What is the optimal distance between energy storage stations?**

The determination of the ideal spacing between energy storage stations is influenced by several distinct factors, including energy demand fluctuations, infrastructure ...

[WhatsApp](#)

### **Siting and Safety Best Practices for Battery Energy Storage ...**

NYSERDA published the Battery Energy Storage System Guidebook, most-recently updated in December 2020, which contains information and





step-by-step instructions to support local ...

[WhatsApp](#)



## The Essential Guide to Energy Storage Building Distance: Safety

The concept of energy storage building distance is more than real estate logistics--it's a cocktail of safety protocols, fire risks, and even zombie-apocalypse-level ...

[WhatsApp](#)



## Manage Storage of Lithium-Ion Vehicle Batteries?

There is a difference when the batteries are being used (ESS) and then you can apply NFPA 855 (0.3 gpm/ft<sup>2</sup> based over the area of the room or 2500 ft<sup>2</sup>) and storage of ...

[WhatsApp](#)



## Marafeq's Design Guidelines for the District Cooling Syst

1.1 The District Cooling System The Energy Transfer Station (ETS) in Lusail city is the Customer's part of the district cooling system. The district cooling system will be operated by Marafeq. ...

[WhatsApp](#)

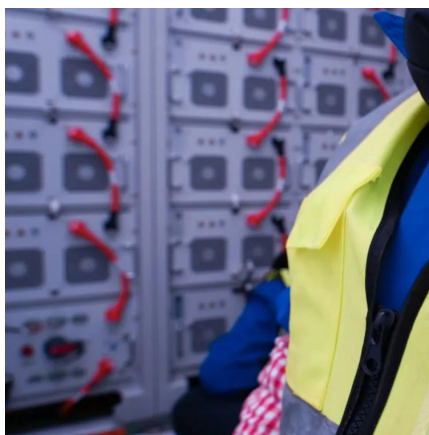
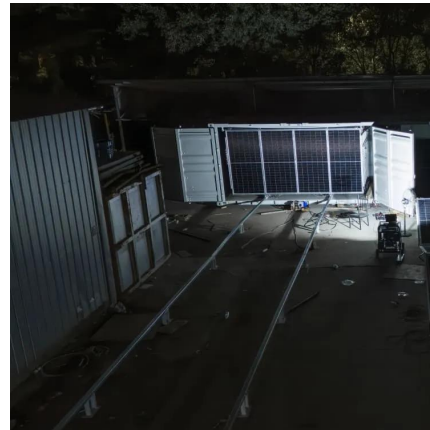




### **Code Corner: NFPA 855 ESS Unit Spacing Limitations -- ...**

In Section 15.5 of NFPA 855, we learn that individual ESS units shall be separated from each other by a minimum of three feet, unless smaller separation distances are ...

[WhatsApp](#)



### **Battery Energy Storage Systems: Main Considerations for Safe**

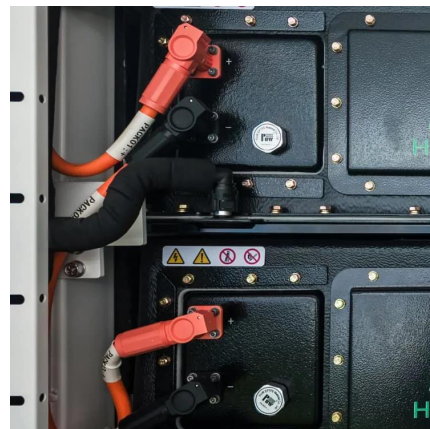
This webpage includes information from first responder and industry guidance as well as background information on battery energy storage systems (challenges & fires), BESS ...

[WhatsApp](#)

### **What are the Essential Site Requirements for Battery Energy Storage**

Learn about site selection, grid interconnection, permitting, environmental considerations, safety protocols, and optimal design for energy efficiency. Ideal for developers ...

[WhatsApp](#)



### **How many meters are the distances between energy storage stations**

Distances between energy storage stations range widely based on various factors, typically falling between 100 to 500 meters, local regulations, geographical considerations, and ...

[WhatsApp](#)



### Essential Safety Distances for Large-Scale Energy Storage Power Stations

Discover the key safety distance requirements for large-scale energy storage power stations. Learn about safe layouts, fire protection measures, and optimal equipment ...

[WhatsApp](#)



### What are the Essential Site Requirements for Battery Energy ...

Learn about site selection, grid interconnection, permitting, environmental considerations, safety protocols, and optimal design for energy efficiency. Ideal for developers ...

[WhatsApp](#)



### Essential Safety Distances for Large-Scale Energy Storage ...

Discover the key safety distance requirements for large-scale energy storage power stations. Learn about safe layouts, fire protection measures, and optimal equipment ...

[WhatsApp](#)





## Contact Us

---

For catalog requests, pricing, or partnerships, please visit:  
<https://www.straighta.co.za>