

Energy mode of mobile base station equipment for fire fighting





Overview

Are power generating stations a risk category 4 emergency backup facility?

Power-generating stations and other public utility facilities requires as emergency backup facilities for Risk Category IV structures. Are sufficient to pose a threat to the public if released². Aviation control towers, air traffic control centers and emergency aircraft hangars.

What are the elements of common emergency power generation systems?

This chapter provides an overview of the elements of common emergency power generation systems. Power sources are devices that create (or store) electricity and ancillary equipment needed for power production or storage. The sources include generators, fuel supplies, stored energy devices, and controls for operating them.

What equipment should be included in an emergency power system?

This includes the generator and all electrical distribution equipment that is part of the emergency system, transfer switches, feeders, panel boards, fuel tanks, and controls. In addition, all critical equipment that the emergency power system supplies must be elevated. Flood risk considerations should not be limited to the emergency power systems.

What is a holistic approach to emergency power system design?

Whether designing a new building's emergency power system, adding capacity to an existing system, or simply analyzing an existing system, a holistic approach considers all aspects of the emergency power system design, installation and operation, along with the essential building systems it will be serving.

How do emergency power systems work?

Unlike normal power distribution systems, emergency power systems are fed from both normal and emergency power sources. The transfer from normal to



emergency power system is completed through transfer switches, which may be automatic or manual.

Do facility managers need a life-safety plan for emergency power systems?

Facility managers should not underestimate the planning required to thoroughly identify equipment and their associated controls to be supplied by the emergency power system. Most codes simply mandate life-safety components only.



Energy mode of mobile base station equipment for fire fighting



[Autonomous Fire Fighting Mobile Platform](#)

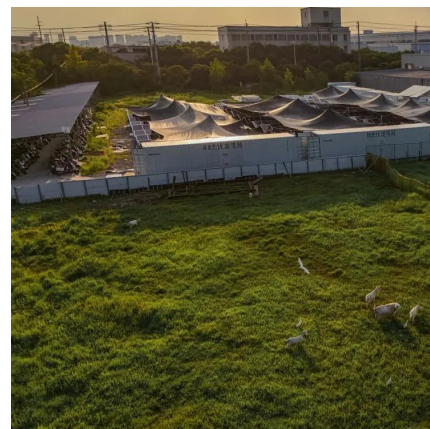
Fire detection and extinguishment are the hazardous job that invariably put the life of a fire fighter in danger. By putting a mobile robot to perform this task in a fire-prone area, it can ...

[WhatsApp](#)

Enhancement of fuel cell based energy sustainability for cell on ...

In this study, an innovative approach is proposed to solve the energy problem of mobile base stations, considering the consistent operation of FC and PV systems.

[WhatsApp](#)



INVESTIGATORY ANALYSIS OF ENERGY REQUIREMENT OF A MULTI-TENANT MOBILE

This study examines the energy requirements of a multi-tenant BTS, focusing on power consumption patterns, key energy-intensive components, and optimization strategies.

[WhatsApp](#)

[Designing Fire And EMS Stations: A Comprehensive Guide](#)

The second method for justifying the need for a fire station is to establish a criterion on the number of calls to an area within a given time --



say, when there are more than two calls per ...

[WhatsApp](#)



Energy-efficiency schemes for base stations in 5G heterogeneous

In today's 5G era, the energy efficiency (EE) of cellular base stations is crucial for sustainable communication. Recognizing this, Mobile Network Operators are actively prioritizing EE for ...

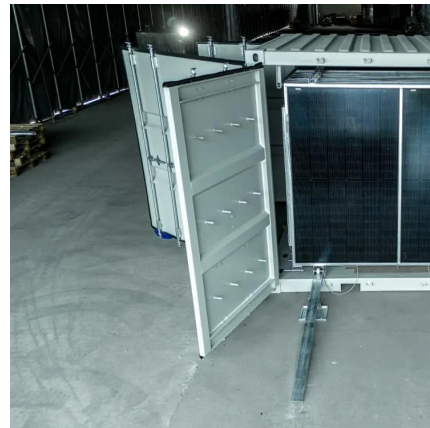
[WhatsApp](#)



[Voice Radio Communications Guide for the Fire Service](#)

Some fire departments equip fire stations with base station radios to provide enhanced coverage throughout their service area and to provide backup communications in the event of a primary ...

[WhatsApp](#)



NFPA 11: US Standard for Firefighting Foam , Oil Technics Fire Fighting

NFPA 11 is an internationally recognised US Standard for Low-, Medium-, and High-Expansion Fire Fighting Foam. The standard was introduced by the National Fire Protection Agency (NFPA).

[WhatsApp](#)





Mobile Fire Safety Station: comprehensive guide to portable fire ...

Among the top contenders are the SafetyHub Mobile Fire Safety Station and the Oak Point Fire Safety Station. Each model offers distinct advantages, catering to diverse needs and ...

[WhatsApp](#)



Movable Base Stations in Mobile Networks for Emergency ...

Movable Base Stations in Mobile Networks for Emergency Communications Published in: 2023 IEEE 34th Annual International Symposium on Personal, Indoor and Mobile Radio ...

[WhatsApp](#)

Fire Fighting Equipment, Mobile.

The report describes a method for evaluation of fire fighting equipment operational and functional performance characteristics. It identifies supporting tests, facilities, and equipment required.

[WhatsApp](#)



The hospital hostage case that changed the American health ...

The hospital hostage case that changed the American health care system Amazing top movie 2025 aardvark abacus abbey abdomen ability abolishment abroad accelerant accelerator accident accompanist accordion account accountant achieve achiever acid acknowledgment acoustic ...



[WhatsApp](#)

[Designing Fire And EMS Stations: A Comprehensive Guide](#)

This course was adapted from the U.S. Fire Administration, "Safety and Health Considerations for the Design of Fire and Emergency Medical Services Stations" which is in the public domain.

[WhatsApp](#)



Contact Us

For catalog requests, pricing, or partnerships, please visit:
<https://www.straightta.co.za>