

Energy Storage Power Station 220kv Substation





Overview

What is a 220 kV substation?

A 220 kV substation is a cornerstone of modern power infrastructure, providing efficient transmission, protection, and regulation of high-voltage power. Whether for national grid stability, renewable energy evacuation, or industrial supply, these substations offer unmatched capacity, scalability, and performance.

How does a 220/132kv power substation work?

A mini project report on operation and maintenance of 220/132KV power substation (on photo: The Greuth substation connects the 132 kV Arnoldstein-Tarvisio line to the existing 220 kV Lienz-Obersielach line (system 266) through a PST (Phase Shifter Transformer) which transforms 220 kV to 132 kV; credit: eneco.it).

What is the difference between 11kV and 220kV substation?

The 11kv substation includes an electrical isolator, lightning arrester, step-down transformer, CT metering, circuit breaker, and capacitor bank. The 220kVA substation here is the power capacity used by the step-down transformer in the substation, and it represents the most obvious power that a step-down transformer can deliver.

What is 220 kV passiana substation?

220 KV Passiana substations is one of the important substations of Punjab State Transmission Corporation Limited (PSTCL). It is the main source of power supply in the district of Patiala. The grid 220 KV substation, Passiana is situated 7-8 km from bus stand of Patiala to Samana Road.

What is the safety distance of 220 kV substation?

The safety distance of the 220 kV substation is 10 meters. National regulations: distance below 1kV is 4 meters, distance between 1-10kv is 6



meters, distance between 35-110kv is 8 meters, distance between 154-220kv is 10 meters, distance between 350-500kv is 15 meters.

How to check 220 kV substation 220 kV main transformer oil leakage?

Oil leakage is one of the common faults of 220 kV substation 220 kv main transformer, so the oil leakage condition needs to be checked frequently. Specific inspection can be divided into three parts. First, oil temperature, mainly by detecting oil temperature to determine the equipment operation status as well as the cooling system working status.



Energy Storage Power Station 220kv Substation



Pilbara Transmission Project (PTP) Stage 3 220kV Transmission ...

Project Scope Fortescue as part of the Pilbara Transmission Project (PTP) engaged Partum to undertake the design of the 220kV transmission line including: 98kM of 220kV overhead ...

[WhatsApp](#)

[220kv energy storage power station project cost](#)

solar farm will also house an onsite energy storage facility. Kiamal solar farm stage two details. The 194MW stage two of the Kiamal solar farm will have up to 270MW energy storage ...

[WhatsApp](#)



Evaluation Method of Alternative Benefit of Energy Storage in ...

The continuing increase in the penetration of renewable energy and the increase in regional power load has led to the inability of the main transformer capacity

[WhatsApp](#)

[The study of 220kV power substation \(equipment details\)](#)

For example, generation voltage (11KV or 6.6KV) at the power station is stepped up to high voltage (say 220KV or 132KV) for transmission of



electric power. The assembly of ...

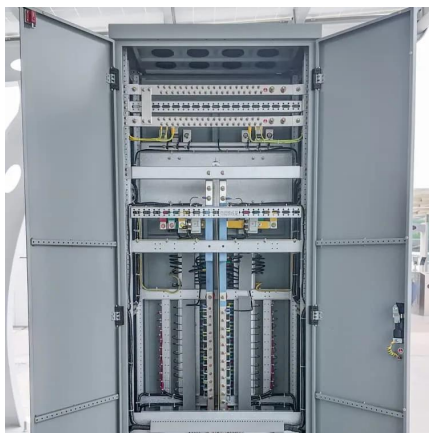
[WhatsApp](#)



220 kV Substation: Structure, Components, and Applications

It serves as a key interface between power generation plants and the downstream transmission and distribution networks. By stepping up or stepping down voltage levels and ...

[WhatsApp](#)



Evaluation Method of Alternative Benefit of Energy Storage in 220kV

The continuing increase in the penetration of renewable energy and the increase in regional power load has led to the inability of the main transformer capacity

[WhatsApp](#)



Simulation and application analysis of a hybrid energy storage station

A simulation analysis was conducted to investigate their dynamic response characteristics. The advantages and disadvantages of two types of energy storage power ...

[WhatsApp](#)





Magtel plans 2.5 GWh Spanish pumped hydro station with solar

6 days ago· The site, in the Just Transition Zone associated with the closure of the Puente Nuevo thermal power plant, includes 39 km of 220 kV lines to the Lancha electrical substation. Magtel ...

[WhatsApp](#)



220kV Energy Storage: Powering the Future of Grid-Scale Solutions

From blackout prevention to enabling 100% renewable grids, 220kV energy storage isn't just a trend--it's the future. And with AI-driven systems now predicting energy demand ...

[WhatsApp](#)



[220kv energy storage station topology](#)

The 100 MW Dalian Flow Battery Energy Storage Peak-shaving Power Station, with the largest power and capacity in the world, has finished its system joint debugging in Dalian, China, and ...

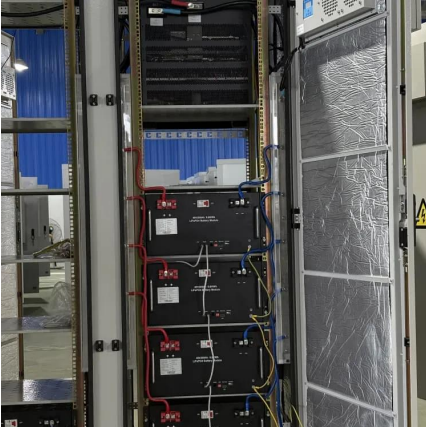
[WhatsApp](#)



Kehua's Solution Refreshes the Altitude Record of Energy Storage

Kehua participated in the energy storage projects of two 220kV substations in Saga and Zhongba in the Ali networking project. The substations reach 4,688 meters and 4,576 ...

[WhatsApp](#)



PSE has signed a contract for the construction of a new substation ...

2 days ago· The investment also includes the construction of one 220 kV rail bridge, allowing for the connection of six facilities such as renewable sources or energy storage. The substation ...

[WhatsApp](#)



[220 kv Substation, Everything You Need To Know](#)

The 220 kV substation is a key link in China's distribution network system, an important interface between the high-voltage transmission system and power users, and the stability of its ...

[WhatsApp](#)



Contact Us

For catalog requests, pricing, or partnerships, please visit:
<https://www.straighta.co.za>