

# **EMS power of European and American communication base stations**





## Overview

---

What is a base station in radio communications?

In radio communications, a base station is a wireless communications station installed at a fixed location and used to communicate as part of one of the following: a wireless telephone system such as cellular CDMA or GSM cell site. Base stations use RF power amplifiers (radio-frequency power amplifiers) to transmit and receive signals.

How does EMS work?

The EMS enables satellite control, allowing satellites to share data. Additionally, it connects terrestrial stations to satellites using uplinks (which send a signal to satellites) and downlinks (which send the signal back down to Earth).

Why does readiness matter for joint EMS forces?

Readiness matters for joint EMS forces because just like a terrestrial battle, fighting in the EMS involves communications, fires, exploitation, and maneuver. Spectrum management is an enabler for electromagnetic warfare, as communication nets must be systematically constructed to connect assets.

Who oversees EMS operations?

Oversight of EMS operations is resident within combatant commands, under a Joint Electromagnetic Spectrum Operations Cell (JEMSOC) as the EMS coordinating authority (EMSCA). These cross-disciplinary, joint teams play a critical role as EMS operations involve signals exploitation, electromagnetic warfare, and spectrum management.

Are EMS systems full-duplex?

Some EMS systems have the system configured for full-duplex where both parties can transmit and receive at the same time. In many areas, they are configured as repeaters on mountaintops with the hospitals transmitting and



receiving the same as any mobile.

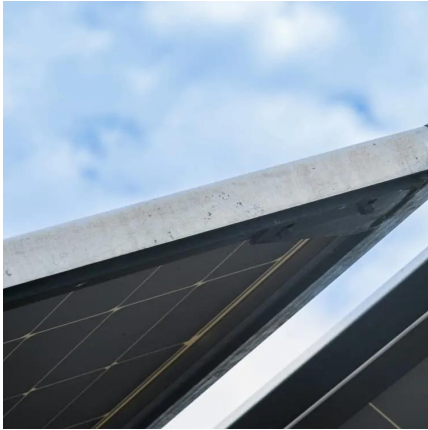
What are EMS equities?

These cross-disciplinary, joint teams play a critical role as EMS operations involve signals exploitation, electromagnetic warfare, and spectrum management. EMS equities reside in commands' J2 (signals intelligence), J3 (operations), and J6 (spectrum management) directorates.



## EMS power of European and American communication base stations

---



### [Strategic Planning for Setting up Base Stations in ...](#)

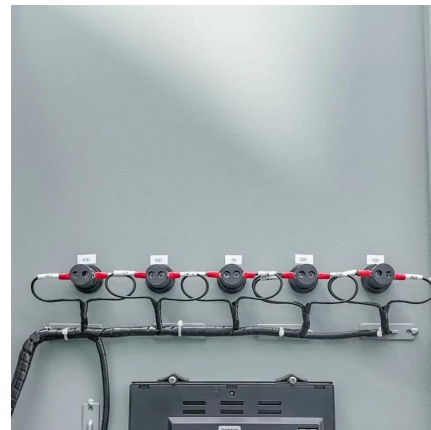
Abstract Emergency Medical Systems (EMSs) are an important component of public health-care services. Improving in-frastructure for EMS and specifically the construction of base stations at ...

[WhatsApp](#)

### [EMS System Communications - georgiaemsacademy](#)

The base station radio generally sites on a desk and is programmed to transmit with increased power to overcome any obstacles or distance that could affect signal propagation.

[WhatsApp](#)



### **Effective Communication in EMS Systems: A Comprehensive Guide**

Understanding and utilizing advanced communication systems, adhering to regulations, and practicing effective communication techniques ensure the delivery of high-quality EMS services.

[WhatsApp](#)

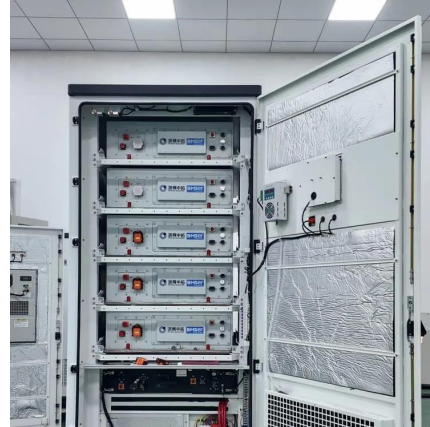
### **An EMS base station: A. Generally uses a low output of between ...**

An EMS base station typically operates at a low transmission power of 50 to 75 watts and is designed to facilitate effective communication



within the emergency response system.

[WhatsApp](#)



### **Design Considerations and Energy Management System for ...**

This paper presents the design considerations and optimization of an energy management system (EMS) tailored for telecommunication base stations (BS) powered by photovoltaic (PV) ...

[WhatsApp](#)

## **Contact Us**

---

For catalog requests, pricing, or partnerships, please visit:  
<https://www.straighta.co.za>