

Doesn't it communicate via a base station





Overview

In communications, a base station is a communications station installed at a fixed location and used to communicate as part of one of the following:

- a system, or;
- a system such as or .

Why are base stations important in cellular communication?

Base stations are important in the cellular communication as it facilitate seamless communication between mobile devices and the network communication. The demand for efficient data transmission are increased as we are advancing towards new technologies such as 5G and other data intensive applications.

How does a base station communicate with a client device?

Generally, if client devices wanted to communicate to each other, they would communicate both directly with the base station and do so by routing all traffic through it for transmission to another device. Base stations in cellular telephone networks are more commonly referred to as cell towers.

What is a base station in telecommunications?

In telecommunications, a base station is a fixed transceiver that is the main communication point for one or more wireless mobile client devices. A base station serves as a central connection point for a wireless device to communicate.

What is a base station in a wireless network?

In the area of wireless computer networking, a base station is a radio receiver/transmitter that serves as the hub of the local wireless network, and may also be the gateway between a wired network and the wireless network. It typically consists of a low-power transmitter and wireless router.

Is a base station a transmitter or broadcast point?

Base stations are generally a transceiver, capable of sending and receiving wireless signals; otherwise, if they only transmitted signals out, they would be



considered a transmitter or broadcast point. A base station will have one or more radio frequency (RF) antennas to transmit and receive RF signals to other devices.

Are base station antennas omnidirectional or directional?

Base station antennas are available in different shapes and sizes and can be either omnidirectional antennas or directional antennas. The operating frequency, coverage area, range, and other performance parameters can vary depending on the base station antenna that is chosen for a specific network.



Doesn't it communicate via a base station



What Is the Role of a Base Station in Wireless Communication?

Base stations are critical components in wireless communication networks, serving as the intermediary between mobile devices and the core network. They play a vital role in ...

[WhatsApp](#)

[Base Station's Role in Wireless Communication Networks](#)

A base station is fundamental in wireless communication, because it facilitates the connection between your device and the wider network. Without base stations, mobile data and voice ...

[WhatsApp](#)



?How do Ring sensors communicate with base station when WiFi ...

The individual sensors do not communicate with the base station through a router (WiFi). They use a low powered radio communication protocol called Z-Wave. Although Ring ...

[WhatsApp](#)

Understanding the Basics of a Base Transceiver Station: A ...

In today's connected world, the base transceiver station (the term BTS stands for Base Transceiver Station and is a key part of wireless



communication infrastructure), often ...

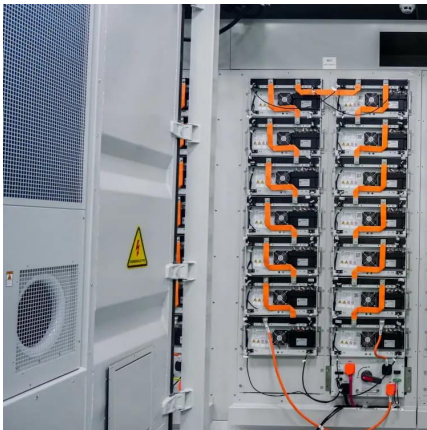
[WhatsApp](#)



Ring Alarm Base Station Can't Find Wi-Fi All Of A Sudden

So, my Ring Alarm has been working awesome for a month. I woke up this morning to it being connected via cellular, all my other devices work fine, I try to get the base station to join my ...

[WhatsApp](#)



[Base Stations: The Core and Future of Telecom Networks](#)

A telecom base station, also known as a mobile communication base station, is a wireless communication device comprised of antennas, transmitters, and controllers. It facilitates data ...

[WhatsApp](#)



[Base Station's Role in Wireless Communication Networks](#)

What is a base station? A base station is a critical component of wireless communication networks. It serves as the central point of a network that connects various devices, such as ...

[WhatsApp](#)

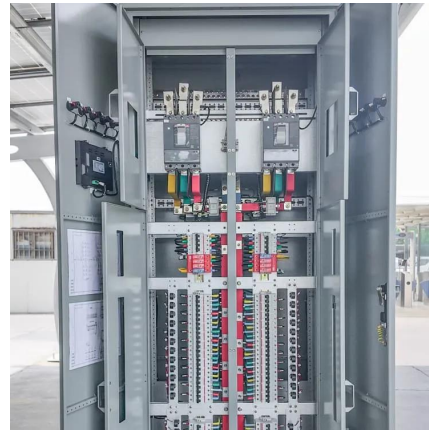




Ring doorbell doesnt communicate with Alarm Base Station? : ...

Ring doorbell doesnt communicate with Alarm Base Station? Hi, as title says, I have the base alarm station + keypad, numerous motion sensors and windows sensors. I bought Doorbell. ...

[WhatsApp](#)



[How exactly *do* the base stations connect : r/ValveIndex](#)

Hi all! I'm contemplating on buying an Index (once they become available) and was wondering exactly how the base stations connect to the PC. Is it Bluetooth, or is more through the ...

[WhatsApp](#)

Base station

OverviewWireless communicationsLand surveyingComputer networkingSee also

In radio communications, a base station is a wireless communications station installed at a fixed location and used to communicate as part of one of the following: o a push-to-talk two-way radio system, or;o a wireless telephone system such as cellular CDMA or GSM cell site.

[WhatsApp](#)



The Base Station in Wireless Communications: The Key to ...

Equipped with an electromagnetic wave antenna, often placed on a tall mast, the base station enables communication between mobile terminals (such as mobile phones or ...

[WhatsApp](#)



[i7 and clean base communication problem SOLVED!! : r/roomba](#)

83 votes, 27 comments. truel cleaned my Roomba including dismounting the bumper and spraying everywhere with my air compressor. However, after 2 days it already has connection ...

[WhatsApp](#)



What Is a Base Station and Its Role in Enhancing GNSS/GPS ...

When we talk about a base station, we're diving into the heart of communication technology. It's essentially a fixed point of communication within a network that connects mobile devices to ...

[WhatsApp](#)



Contact Us

For catalog requests, pricing, or partnerships, please visit:
<https://www.straighta.co.za>