

# **Does wind-solar hybrid communication base stations belong to the base of the tower**





## Does wind-solar hybrid communication base stations belong to the

---



### Communication Base Station Smart Hybrid PV Power Supply ...

The Ipandee hybrid PV Direct Current (DC) Power Supply System is a green energy power supply solution specifically designed for communication operators to save energy, reduce carbon ...

[WhatsApp](#)

### Assembled wind-solar hybrid self-powered communication base ...

The invention discloses an assembled wind-solar hybrid self-powered communication base station, which comprises support components, a transmission tower and a power supply system.

[WhatsApp](#)



### Communication Base Station Energy Power Supply System

The wind-solar-diesel hybrid power supply system of the communication base station is composed of a wind turbine, a solar cell module, an integrated controller for hybrid energy ...

[WhatsApp](#)



### How to make wind solar hybrid systems for telecom stations?

At present, wind and solar hybrid power supply systems require higher requirements for base station power. To implement new energy



development, our team will continue to conduct ...

[WhatsApp](#)



### **Assembled wind-solar hybrid self-powered communication base station**

The invention discloses an assembled wind-solar hybrid self-powered communication base station, which comprises support components, a transmission tower and a power supply system.

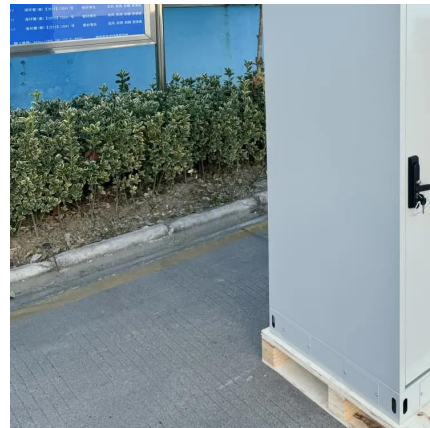
[WhatsApp](#)



### **Communication Base Station Smart Hybrid PV Power Supply ...**

The Telecom Base Station Intelligent Grid-PV Hybrid Power Supply System helps telecom operators to achieve "carbon reduction, energy saving" for telecom base stations and machine ...

[WhatsApp](#)



### **Wind-Solar Hybrid Power Technology for Communication Base Station**

Wind-solar hybrid power system based on the wind energy and solar energy is an ideal and clean solution for the power supply of communication base station, especially for those located at ...

[WhatsApp](#)







## Solar Power Plants for Communication Base Stations: The Future ...

Why Solar Energy Is Becoming Non-Negotiable for Telecom Towers You know, the telecom industry's facing a perfect storm. With global mobile data traffic projected to hit 288 ...

[WhatsApp](#)



## Application of wind solar complementary power generation ...

As inexhaustible renewable resources, solar energy and wind energy are quite abundant on the island. In addition, solar energy and wind energy are highly complementary in ...

[WhatsApp](#)

## The Hybrid Solar-RF Energy for Base Transceiver Stations

In this work, we propose a new hybrid energy harvesting system for a specific purpose such as powering the base stations in communication networks. The hybrid solar-RF ...

[WhatsApp](#)



## The Role of Hybrid Energy Systems in Powering Telecom Base Stations

Discover how hybrid energy systems, combining solar, wind, and battery storage, are transforming telecom base station power, reducing costs, and boosting sustainability.

[WhatsApp](#)



### **Communication base station power station based on wind-solar**

The communication base station power station based on wind-solar complementation comprises a foundation base, a communication tower mast, a base station machine room, a wind power ...

[WhatsApp](#)



### **Nepal's communication base station adopts Huatong's solar ...**

Huatong Yuantong (HT SOLAR POWER) and Nepal Telecom reached a strategic cooperation intention, and successively developed a communication base station solar power ...

[WhatsApp](#)

## **Contact Us**

For catalog requests, pricing, or partnerships, please visit:  
<https://www.straightta.co.za>