

Does the inverter not turn on the power supply battery





Overview

Here are four simple reasons why your AC inverter does not turn on automatically: 1. Low voltage is the most prevalent reason for your AC power industrial inverters not switching on automatically. And there is nothing much to worry about. All you have to do is check the voltage using a voltmeter.

Low voltage is the most prevalent reason for your AC power industrial inverters not switching on automatically. And there is nothing much to worry about. All you have to do is check the voltage using a voltmeter. If the voltmeter shows low voltage, it means you.

The battery is the fundamental part of inverters. So if the battery has some issue, there is practically zero possibility of your inverter turning on. Now there can be multiple reasons for a battery not working, like: 1. The battery needs charging. 2. Improperly.

Inverter starts working when it gets the signal that there's a power cut. But if you do not connect it to the main power supply, the inverter will not know whether there is a power outage or not. So ensure the power input remains connected to your AC inverters 24*7.

Fuse is essential in turning the inverter on, and the inverter will not automatically switch on if it is blown. So if you ever notice a brown stain on the fuse, it means the inverter fuse has.

Check the Battery: Ensure that the battery is fully charged. If the battery voltage is too low, the inverter may not turn on. Use a multimeter to measure the voltage. If it's below the required level, recharge the battery or replace it if it's defective. Why is my inverter not charging a battery?

An inverter that is connected to a battery bank depends on the battery for power. If the capacity is too low, the inverter will not be able to run its load. The solution is to charge the battery. If your system is on the grid, switch to AC power for now and let the battery get fully charged.

Why does my power inverter not turn on?

1. Inverter Won't Turn On If your power inverter fails to turn on, there are a



few potential causes to investigate: Ensure the DC input cables are securely connected to the battery terminals and inverter. Loose connections prevent proper current flow. Check for corroded or damaged terminals and clean or replace as needed.

Why does my inverter keep shutting down?

The inverter will shut down if the input voltage from the battery drops too low (often below 10.5V). This protects the battery from damage. Recharge or replace the battery to bring the voltage back to a sufficient level. Check for a charging system failure if the battery isn't recharging properly.

Why is my inverter displaying a low or no battery warning?

An inverter displaying a low or no battery warning usually means that the energy storage system is unable to provide enough energy to the load. The problem may be related to the condition of the battery itself, a faulty charging system, or abnormal environmental conditions. Aging or declining battery capacity.

What happens if an inverter runs with low battery power?

If the inverter is on but unable to carry any load, the battery might be weak. Forcing an inverter to run with low battery power can be disastrous. An inverter that is connected to a battery bank depends on the battery for power. If the capacity is too low, the inverter will not be able to run its load. The solution is to charge the battery.

Do inverters have problems?

Inverters are very useful devices that help us keep our homes and offices powered during electricity outages. They convert DC power from batteries into AC power that can run our appliances. But like any machine, inverters can sometimes have problems. This article will explain 15 common inverter problems and how to fix them.



Does the inverter not turn on the power supply battery



[4 Reasons Why Your AC Power Inverter Does Not Turn On](#)

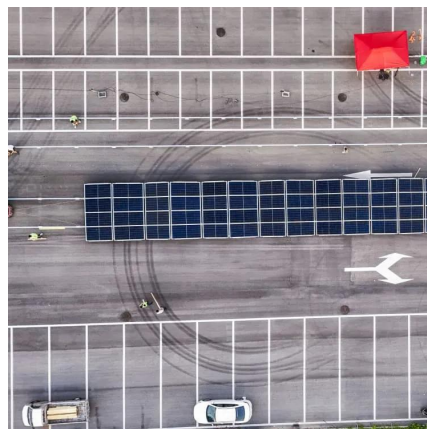
Here are four simple reasons why your AC inverter does not turn on automatically: 1. Low voltage is the most prevalent reason for your AC power industrial inverters not ...

[WhatsApp](#)

Power Inverter Problems: 5 Most Frequent Issues and How to Solve

An inverter displaying a low or no battery warning usually means that the energy storage system is unable to provide enough energy to the load. The problem may be related to ...

[WhatsApp](#)



[Should we switch off inverter when not in use?](#)

Does inverter charge battery when off? Originally Answered: Battery will charge fast after switching off inverter? No, as the inverter being used in our home is offline type that is it will ...

[WhatsApp](#)

[Common Home Inverter Problems and How to Fix Them](#)

Learn about the most common home inverter problems and how to fix them. From battery issues to inverter malfunctioning, this guide



provides easy solutions to keep your home ...

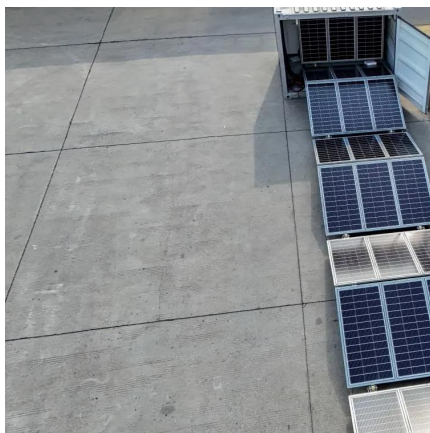
[WhatsApp](#)



Power Inverter Troubleshooting - Common Problems and How to ...

Overloading the inverter by connecting appliances that draw too much power is a frequent cause of problems. 1. Inverter Won't Turn On. If your power inverter fails to turn on, ...

[WhatsApp](#)



[Troubleshooting Inverter Problems: A Step-by-Step Guide](#)

Check the Battery: Ensure that the battery is fully charged. If the battery voltage is too low, the inverter may not turn on. Use a multimeter to measure the voltage. If it's below the ...

[WhatsApp](#)



[How Do You Fix an Inverter Overload Problem?](#)

Modern inverters have built in overload protection, so the worst thing that will probably happen is the system will not run. Fortunately there are ways to fix an inverter overload, and you can try ...

[WhatsApp](#)



Inverter not automatically changing over to Battery Supply when ...

Upon inspection, we found that the LAN port on the Circuit Board of the Inverter was damaged and needed replacement. After much duress, the supplier has given me a loan ...

[WhatsApp](#)



[Do I Need to Turn Off My Inverter When Not in Use?](#)

2? If your inverter does not have a bypass mode, skip the first step. Locate the switch button on the control panel and turn off the inverter directly. 3? Disconnect the AC/DC ...

[WhatsApp](#)

[Complete Guide to Inverter Batteries - NPP POWER](#)

Inverter batteries is a rechargeable battery built to supply backup power for inverters, which convert direct current (DC) into alternating current (AC). These batteries store ...

[WhatsApp](#)



[Do Inverters Turn Off When Voltage is too low?](#)

Group, If my batteries drop too low and the grid is off will an inverter turn off (stop outputting AC current)? I want to verify it will shut off and not provide dangerously low voltage ...

[WhatsApp](#)



[Inverter is On But Not Working - Solved](#)

You turn the inverter on but it refuses to work. What could be the reason for it? Let us go over the most common reasons why this can happen and how to fix it. Pressing the reset button usually ...

[WhatsApp](#)



Contact Us

For catalog requests, pricing, or partnerships, please visit:
<https://www.straighta.co.za>