

Does the communication base station have a power supply





Overview

➤ Power Supply: Base station CB radios require an external power source, typically 120V AC, or a suitable power adapter, unlike mobile units that rely on vehicle batteries. What are the components of a base station?

Power Supply: The power source provides the electrical energy to base station elements. It often features auxiliary power supply mechanisms that guarantee operation in case of lost or interrupted electricity, during blackouts. Baseband Processor: The baseband processor is responsible for the processing of the digital signals.

What is a communication base station?

Communication base station setups will usually include a wide array of different technologies, including power supplies, data servers, head end, radio repeaters, and communication systems that allow for high-speed continuous information flow. It can also be used as part of a leaky feeder system in the communication network.

Why do we need a base station?

Technological advancements: The New technologies result in evolved base stations that support upgrades and enhancements such as 4G, 5G and beyond, its providing faster speeds with better bandwidth. Emergency services: They provide access to emergency services, so that in case of emergency, people can call through their mobile phones.

Why are base stations important in cellular communication?

Base stations are important in the cellular communication as it facilitate seamless communication between mobile devices and the network communication. The demand for efficient data transmission are increased as we are advancing towards new technologies such as 5G and other data intensive applications.

How does a base station work?



It usually connects the device to other networks or devices through a dedicated high bandwidth wire or fiber optic connection. Base stations typically have a transceiver, capable of sending and receiving wireless signals; Otherwise if they only send the trailer it will be considered a transmitter or broadcast point only.

What are the properties of a base station?

Here are some essential properties: Capacity: Capacity of a base station is its capability to handle a given number of simultaneous connections or users. Coverage Area: The coverage area is a base station is that geographical area within which mobile devices can maintain a stable connection with the base station.



Does the communication base station have a power supply



Selecting the Right Supplies for Powering 5G Base Stations

As a result, a variety of state-of-the-art power supplies are required to power 5G base station components. Modern FPGAs and processors are built using advanced nanometer processes ...

[WhatsApp](#)

Measurements and Modelling of Base Station Power Consumption under Real

Abstract Base stations represent the main contributor to the energy consumption of a mobile cellular network. Since traffic load in mobile networks significantly varies during a working or ...

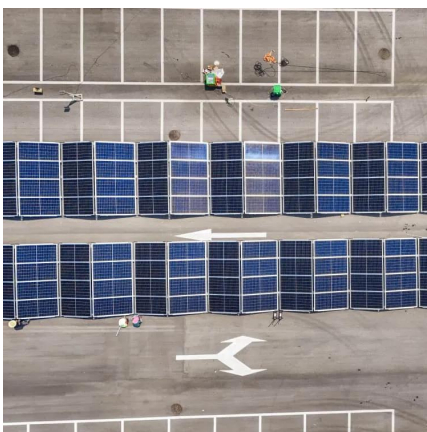
[WhatsApp](#)



Requirements for UPS Power Supply in Communication Base ...

The UPS power supply for base stations is an essential component of the entire communication power system. It is widely used in the communication industry due to its high ...

[WhatsApp](#)



Multi-objective cooperative optimization of communication base station

Recently, 5G communication base stations have steadily evolved into a key developing load in the distribution network. During the operation



process, scientific dispatching ...

[WhatsApp](#)



[Communication power supply design based on PFC and LLC](#)

In order to meet the high power and high stability requirements of communication base stations for power supply, this paper designs a dedicated 500W switch power supply for ...

[WhatsApp](#)



(PDF) Dispatching strategy of base station backup power supply

PDF , With the mass construction of 5G base stations, the backup batteries of base stations remain idle for most of the time. It is necessary to explore , Find, read and cite all ...

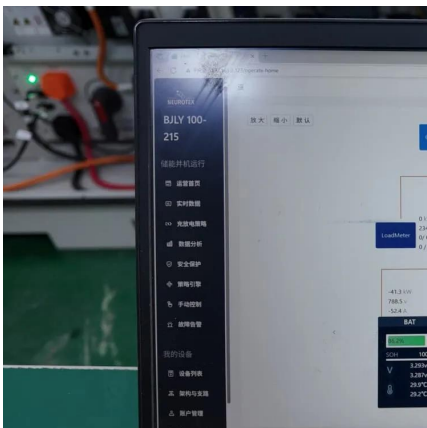
[WhatsApp](#)



Selecting the Right Supplies for Powering 5G Base Stations

As a result, a variety of state-of-the-art power supplies are required to power 5G base station components. Modern FPGAs and processors are built using advanced nanometer processes ...

[WhatsApp](#)





A technical look at 5G energy consumption and performance

Figure 3: Base station power model. Parameters used for the evaluations with this cellular base station power model. Energy saving features of 5G New Radio The 5G NR ...

[WhatsApp](#)



Optimizing the power supply design for communication base stations

The design of the power supply system of modern communication base stations is an important part of ensuring the normal operation of the base station, and must be able to ...

[WhatsApp](#)

Setting Up a Base Station CB Radio for Long Range Communication

Power Supply: Base station CB radios require an external power source, typically 120V AC, or a suitable power adapter, unlike mobile units that rely on vehicle batteries.

[WhatsApp](#)



What is a base station energy storage power station , NenPower

A base station energy storage power station refers to a facility designed to store energy generated from various renewable sources and supply it efficiently to power base ...

[WhatsApp](#)



[Telecom Base Station Power System Solution](#)

In order to ensure the continuity and efficiency of communication services, the power system of telecommunications base stations needs to have high reliability, stability and high efficiency to ...

[WhatsApp](#)



Requirements for UPS Power Supply in Communication Base Stations

The UPS power supply for base stations is an essential component of the entire communication power system. It is widely used in the communication industry due to its high ...

[WhatsApp](#)

Dispatching strategy of base station backup power supply ...

Dispatching strategy of base station backup power supply considering communication flow variation Zheyu OUYANG and Yanchi ZHANG
Shanghai Dianji University, Shanghai 200240, ...

[WhatsApp](#)





Power Supply Solutions for Wireless Base Stations Applications

MORNSUN has designed entire collections of power supplies and related electrical components, which are all known in the industry for their high reliability and quality. In particular, MORNSUN ...

[WhatsApp](#)

[How do communication base stations work](#)

Communication base stations, or cell towers, are vital for wireless networks. They consist of antennas, transceivers, controllers, and power supplies to transmit and receive signals. The ...

[WhatsApp](#)



Why does the communication base station use -48V power supply?

Communication base stations use -48V power supply for most historical reasons. Historically, the communications industry equipment has been using -48V DC power supply. ...

[WhatsApp](#)

Contact Us

For catalog requests, pricing, or partnerships, please visit:
<https://www.straighta.co.za>