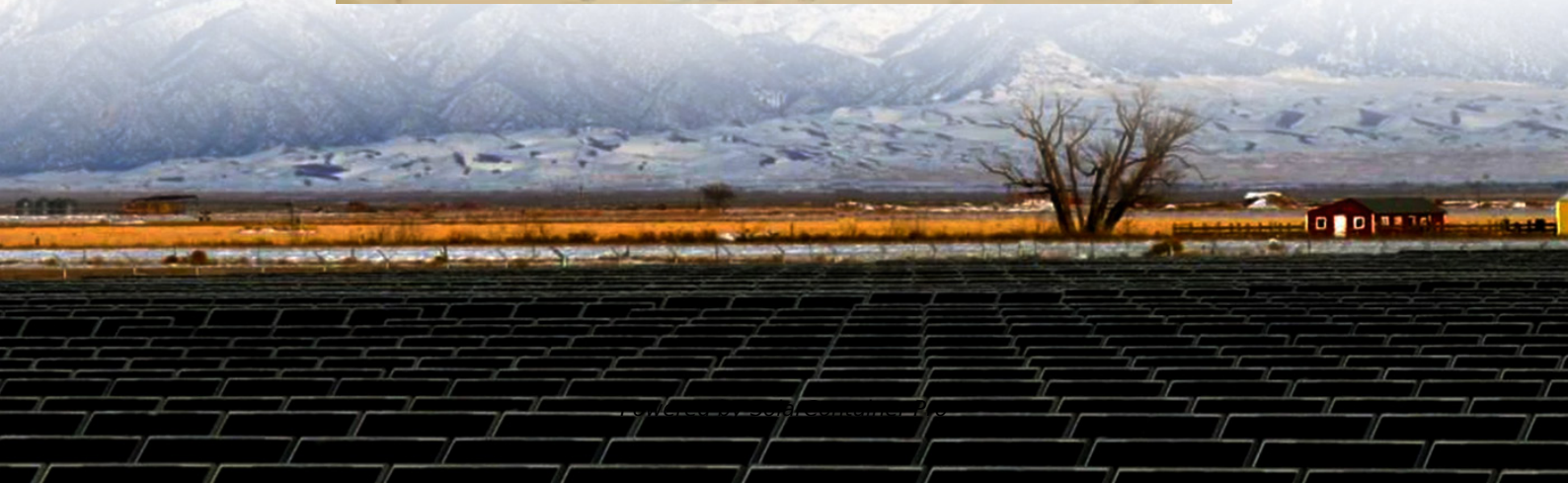


Does the Green Communication Base Station have batteries for houses





Overview

Are cellular base stations sustainable?

Multiple requests from the same IP address are counted as one view. Energy efficiency and renewable energy are the main pillars of sustainability and environmental compatibility. This study presents an overview of sustainable and green cellular base stations (BSs), which account for most of the energy consumed in cellular networks.

Which battery is best for telecom base station backup power?

Among various battery technologies, Lithium Iron Phosphate (LiFePO₄) batteries stand out as the ideal choice for telecom base station backup power due to their high safety, long lifespan, and excellent thermal stability.

What makes a telecom battery pack compatible with a base station?

Compatibility and Installation Voltage Compatibility: 48V is the standard voltage for telecom base stations, so the battery pack's output voltage must align with base station equipment requirements. Modular Design: A modular structure simplifies installation, maintenance, and scalability.

Should telecommunication operators invest in a telecom battery backup system?

Investing in a telecom battery backup system is always one of the priorities for telecommunication operators in the 5G era. Sunwoda 48V telecom batteries have a capacity covering 50Ah-150Ah, which can easily meet the power backup needs of macro and micro base stations.

How do you protect a telecom base station?

Backup power systems in telecom base stations often operate for extended periods, making thermal management critical. Key suggestions include: Cooling System: Install fans or heat sinks inside the battery pack to ensure efficient heat dissipation.



Is a hybrid PV/DG system suitable for a GSM BS?

Imtiaz et al. [118] proposed a hybrid PV/DG system design for a GSM BS. The HOMER simulation results show that 6 kW PV, 2 kW DG, and eight 200Ah batteries comprise the optimal combination of energy system components.



Does the Green Communication Base Station have batteries for hou



What are base station energy storage batteries used for?

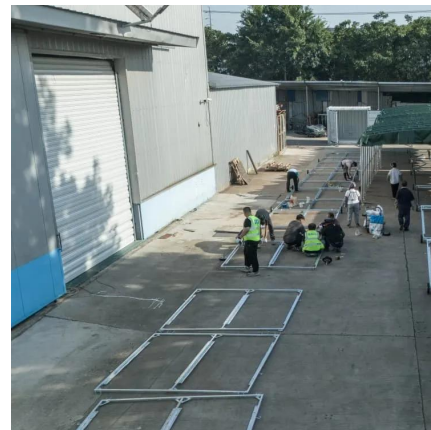
Energy storage batteries can be seamlessly integrated with renewable energy sources, enhancing the resilience and sustainability of telecommunications infrastructure. ...

[WhatsApp](#)

[Base Station \(Gen 3\) Overview and Installation Guide](#)

OverviewThe Base Station is the brains of your system. It sends alarm signals to the monitoring center* with built-in cellular and Wi-Fi connections, a battery backup that lasts up to 24 hours, ...

[WhatsApp](#)



Telecom Base Station Backup Power Solution: Design Guide for ...

Among various battery technologies, Lithium Iron Phosphate (LiFePO₄) batteries stand out as the ideal choice for telecom base station backup power due to their high safety, ...

[WhatsApp](#)

[Telecom Battery Backup System , Sunwoda Energy](#)

Investing in a telecom battery backup system is always one of the priorities for telecommunication operators in the 5G era.



Sunwoda 48V telecom batteries have a capacity covering 50Ah ...

[WhatsApp](#)



[Questions about new system , SimpliSafe Support Home](#)

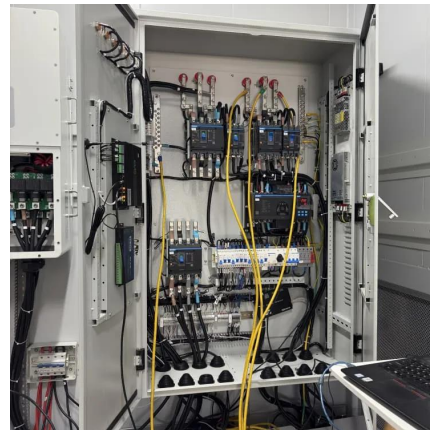
My existing sensor batteries last 7 to 10 years, and the base station backup battery 5 to 6 years. How long do the Simplisafe sensor batteries last? And is the base station backup ...

[WhatsApp](#)

The Role of Hybrid Energy Systems in Powering Telecom Base Stations

Discover how hybrid energy systems, combining solar, wind, and battery storage, are transforming telecom base station power, reducing costs, and boosting sustainability.

[WhatsApp](#)



[Telecom Battery Backup System , Sunwoda Energy](#)

A telecom battery backup system is a comprehensive portfolio of energy storage batteries used as backup power for base stations to ensure a reliable and stable power supply. As we are ...

[WhatsApp](#)

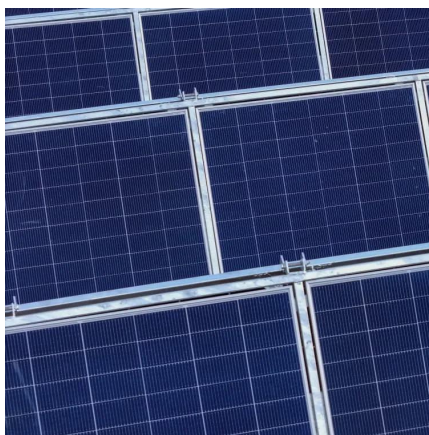




Lithium battery is the magic weapon for communication base station

Intelligent energy storage lithium battery can effectively protect the base station battery in the event of the accidental short circuit, lightning shock, and other conditions, timely ...

[WhatsApp](#)



Solar Power Supply Systems for Communication Base Stations: ...

In low-temperature environments, solar gel batteries are used to ensure stable power supply and the durability of the batteries. Inverters also play a crucial role in the system.

[WhatsApp](#)

[Base station energy storage expert . EK Solar Energy](#)

We offer industrial-grade batteries in various voltage ranges, typically spanning from mid-voltage to high-voltage systems, ensuring scalability and compatibility with different energy demands.

[WhatsApp](#)



Green and Sustainable Cellular Base Stations: An Overview and ...

Energy efficiency and renewable energy are the main pillars of sustainability and environmental compatibility. This study presents an overview of sustainable and green cellular ...

[WhatsApp](#)



Communication Base Station Energy Solutions

While the initial investment in energy storage battery systems may be higher, they require no continuous fuel consumption and can last for more than 10 years, significantly lowering ...

[WhatsApp](#)



Security System Base Station , SimpliSafe Home Alarm

Base Stations Blanket your home with security. The Base Station is the brains of your system. When one sensor or camera detects danger, it sends a signal to the Base Station, which ...

[WhatsApp](#)

Revolutionising Connectivity with Reliable Base Station Energy ...

Base station energy storage refers to batteries and supporting hardware that power the BTS when grid power is unavailable or to smooth out intermittent renewable sources like ...

[WhatsApp](#)





Contact Us

For catalog requests, pricing, or partnerships, please visit:
<https://www.straighta.co.za>