

Does it share a 5G base station with Huawei





Overview

How many 5G base stations does Huawei have?

The contracts have been split into two projects, with the first covering 63,800 base stations using 2.6GHz to 4.9GHz spectrum, while the second covers 23,141 in the 700MHz band. Huawei is estimated to have secured 45,426 5G base stations worth an estimated 4.1 billion yuan (US\$574 million).

Why is Huawei a 5G partner?

It has invested the US \$1.4 billion in 5G product development in the year 2017 to 2018. Huawei is becoming a partner with 50+ corporates for 30 5G commercial contracts and 25000 base station shipments. Huawei improved its infrastructure and also received 5G R&D Outstanding Contribution Award and many more. Huawei is the only equipment provider.

Does Huawei have a 5G network?

Huawei improved its infrastructure and also received 5G R&D Outstanding Contribution Award and many more. Huawei is the only equipment provider equipment (Carrier Huawei, n.d.). Huawei is the second-largest smartphone company in the globe with a market share of around 15.8% (KHANDELWAL, n.d.). They have every chance of adaption. 8.1.2.

How much will Huawei spend on 5G?

The operator, which ended Q1 with 983 million mobile subscribers, expects to spend 83.1 billion yuan (\$11.6 billion) on 5G networks this year. Huawei previously won 57 percent of China Mobile's previous 5G tender process back in 2020.

What is a 5G network architecture?

The following describes the concepts needed to understand 5G network architectures: Evolved Packet Core (EPC): an LTE core network. EPC is classified into two types: traditional LTE core network (supporting access



through LTE base stations) and upgraded LTE core network (also called EPC+, supporting access through 5G base stations).

What is a standalone 5G network?

Standalone (SA): standalone networking. SA uses an end-to-end 5G network architecture, where 5G standards are used on terminals, base stations, and core networks. SA supports a variety of 5G new services, including eMBB, URLLC, and mMTC, and is applicable to the middle and later stages of 5G network construction.



Does it share a 5G base station with Huawei



Huawei 5G equipment didn't face major impact of US ban: Report

Huawei 5G network equipment has been blacklisted in many foreign countries due to the US ban. But it seems these restrictions didn't have a major impact on the firm's network ...

[WhatsApp](#)

How does Huawei ensure the smooth integration of its 5G base ...

Dynamic Spectrum Sharing is another key technology utilized by Huawei to facilitate the integration of 5G base stations with existing 4G LTE networks. DSS enables the efficient use ...

[WhatsApp](#)



[5G Network Architectures and Technologies](#)

eNodeB (eNB): an LTE base station. Two types of eNBs are available: One is the conventional LTE eNB, supporting connections to an LTE core network, and the other is the enhanced LTE ...

[WhatsApp](#)

Huawei wins huge share of China Mobile's 5G base station ...

In total, Huawei has won 52 percent of China Mobile's 5G base station work, as part of the largest portion of the contracts put out for tender



this year, according to Yicai Global.

[WhatsApp](#)



Huawei develops device that can install 5G on 2G and 3G base stations

Huawei has developed a device that allows the implementation of 5G network on existing base stations for 2G, 3G and 4G technology, boasted the Chinese company whose work has been ...

[WhatsApp](#)



What types of spectrum bands do Huawei's 5G base stations ...

Huawei's 5G Base Stations: Spectrum Bands, Network Capacity, and Coverage Introduction
Huawei is a leading telecommunications equipment provider that offers a wide range of 5G ...

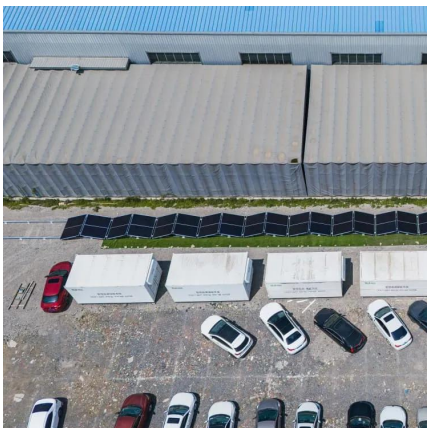
[WhatsApp](#)



Huawei unleashes 5G base station core chip, Huawei TIANGANG ...

China's tech giant, Huawei Technologies Co., Ltd. has recently launched world's first core chip - Huawei TIANGANG that is tailored specifically for 5G base stations.

[WhatsApp](#)





[Base Station Huawei BBU5900 Series 5G LTE UBBPF1 ...](#)

With its advanced features and energy-efficient design, the Huawei BBU5900 base station is a scalable and future-proof solution, ideal for deployment across various environments, including ...

[WhatsApp](#)



How does Huawei ensure the smooth integration of its 5G base stations

Dynamic Spectrum Sharing is another key technology utilized by Huawei to facilitate the integration of 5G base stations with existing 4G LTE networks. DSS enables the efficient use ...

[WhatsApp](#)



How many countries have deployed Huawei's 5G base stations, ...

Huawei has successfully deployed its 5G base stations in numerous countries across the globe. As of now, there are several countries where Huawei's 5G base stations are operational.

[WhatsApp](#)



China Unicom Beijing and Huawei Announce World's First Large ...

The 10-gigabit 5G-Advanced low-altitude economy innovation base drives low-altitude economic development in Yanqing At the Great Wall scenic area, the Beijing Yanqing ...

[WhatsApp](#)



5G-A Receivers to Supplement 5G Base Stations, Huawei ...

Shenzhen-based Huawei and China Mobile deployed nearly one thousand 5G-A base stations in Beijing, Shanghai, Hangzhou, and Shenzhen in the first half of this year, Sun ...

[WhatsApp](#)



Contact Us

For catalog requests, pricing, or partnerships, please visit:
<https://www.straighta.co.za>