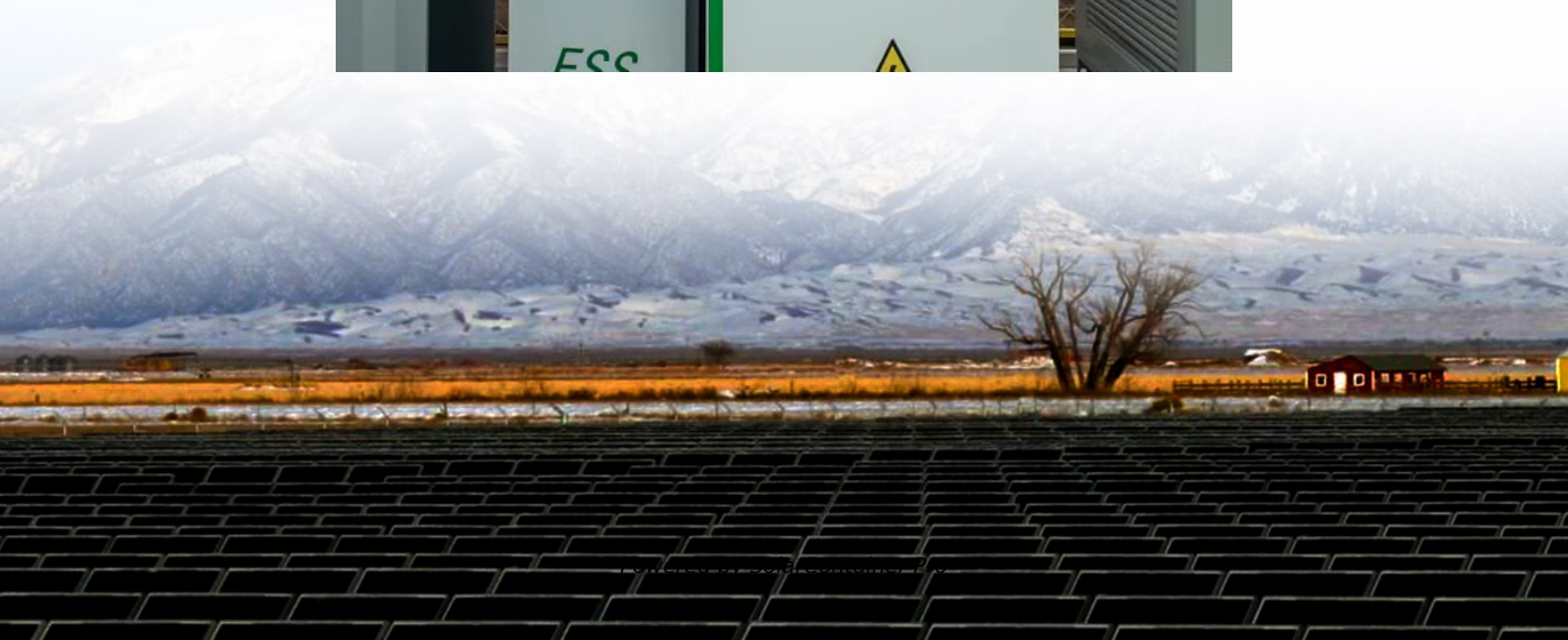


Does a larger inverter consume more electricity





Overview

Why is a high power inverter more efficient?

Higher power inverters tend to have higher no load draw 4. Inverters do not have uniform efficiency across their whole power range (most but not all will be most efficient at or near their limit) 5. No inverter is more efficient than the most efficient inverter, so the more you can run directly from DC the less efficiency penalty you get hit with.

Does inverter size matter?

Well, size does matter, but there is more to it. An inverter uses 10% more power than its appliance load due to inefficiency and standby mode requirements. Inverter efficiency increases with a higher load, so they should always run close to full capacity.

How much power does an inverter use?

When you include the idle power consumption of the inverter with it's conversion inefficiency while powering small loads, 50-150W, 55-70% efficient is a good number. Many units have a "low power" option where idle power consumption is decreased; however, those are only useful if you have NO loads whatsoever on the unit.

Do inverters increase energy costs?

An inverter converts direct current (DC) from sources such as batteries or solar panels into alternating current (AC). Its primary function is to store power, and there is a common misconception that inverters increase energy costs. So, does inverter increase electricity bill?

.

Do inverters consume the same amount of battery power?

Look at the efficiency curves and do your calculation. – Eugene Sh.



Approximately, yes, they would consume the same amount of battery power. All else being equal. But some inverters are more efficient than others. And there are a lot of very poor quality inverters available on the market for some reason.

Are expensive inverters better?

1. More expensive inverters will tend to have higher conversion efficiency and lower no load draws Watt for Watt compared to similar budget models. 2. Most quality inverters will have low power 'eco' modes, but there are caveats to these modes from what I've heard 3. Higher power inverters tend to have higher no load draw 4.



Does a larger inverter consume more electricity



Uncover the energy efficiency secrets: how much electricity does ...

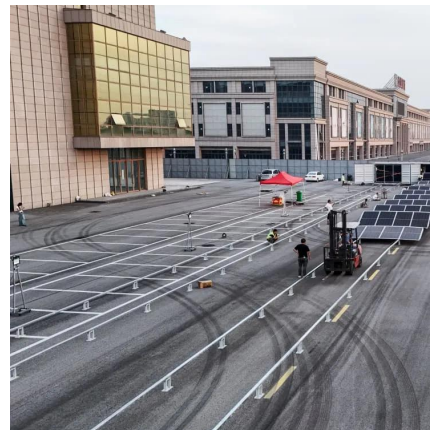
Factors Affecting Electricity Consumption Several factors determine the electricity consumption of an inverter air conditioner, including: Size and Capacity: Larger units with ...

[WhatsApp](#)

Are Large Inverters Less Efficient?

An inverter uses 10% more power than its appliance load due to inefficiency and standby mode requirements. Inverter efficiency increases with a higher load, so they should always run close ...

[WhatsApp](#)



What Happens If Your Inverter Is Too Big? Risks, Solutions

Inverters achieve peak efficiency at 70-90% load. When oversized, they operate at low loads (e.g., 10-30%), wasting energy through higher standby consumption (up to 50W daily) and ...

[WhatsApp](#)

How Many Watts Does an Inverter Refrigerator Use: A Closer ...

An inverter refrigerator is a popular appliance that helps us keep our food fresh and cool. However, one question that often arises is, "How



many watts does an inverter ...

[WhatsApp](#)



Mini Split Energy Consumption: A Comprehensive Examination

Mini-split air conditioners, lauded for their efficient and zone-specific comfort control, are a popular choice for modern homes. But how much energy do they use? This in-depth ...

[WhatsApp](#)



How much power does an Inverter use just sitting there idling?

Hello, Quick question. I have a 24V 3000W pure sine wave inverter powering two 15A circuits. The inverter itself uses about 30W running a 500W load. There are some times ...

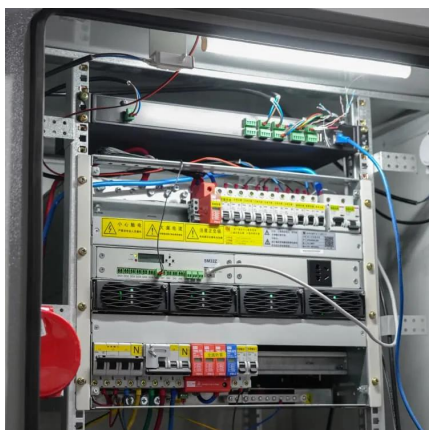
[WhatsApp](#)



[How does the size of an inverter affect its performance](#)

Oversized inverters can be more expensive upfront, but they may allow for future expansions without needing to replace the inverter. Undersized inverters might be more cost ...

[WhatsApp](#)





Does an inverter only draw power from a battery as-needed?

Approximately, yes, they would consume the same amount of battery power. All else being equal. But some inverters are more efficient than others. And there are a lot of very poor quality ...

[WhatsApp](#)



Inverter Power Draw: How Much Power Does An Inverter Use ...

A larger load will cause the inverter to use more power, while a lighter load results in lower consumption. Additionally, inverters have idle power draws, meaning they consume ...

[WhatsApp](#)

Does an Inverter Increase Your Electricity Bill? A Comprehensive

Generally, the larger the inverter, the higher the wattage output, and consequently, the more electricity it consumes. However, it's worth noting that once the batteries of an inverter are fully ...

[WhatsApp](#)



Does a larger size inverter draw more energy from a battery bank ...

The larger inverter gives you the chance to connect more load to your system. You'd also spend more money on a larger size inverter and that's the only disadvantage.

[WhatsApp](#)



[Does Inverter Air Conditioner Save Electricity](#)

Inverter air-conditioners are much more energy-efficient than non-inverter models, with some studies showing that inverters use up to 30% less electricity. This is because an ...

[WhatsApp](#)



Given The Same Load, Will A Larger Inverter Generator Burn More ...

For instance, let's say I run a load of exactly 1000 watts. Will a 4000-watt inverter generator burn more fuel per hour than a 3000-watt inverter generator on a 1000-watt load? ...

[WhatsApp](#)

Contact Us

For catalog requests, pricing, or partnerships, please visit:
<https://www.straightta.co.za>