

# **Does a communication base station need a power supply**





## Overview

---

What are the components of a base station?

**Power Supply:** The power source provides the electrical energy to base station elements. It often features auxiliary power supply mechanisms that guarantee operation in case of lost or interrupted electricity, during blackouts.

**Baseband Processor:** The baseband processor is responsible for the processing of the digital signals.

Why do we need a base station?

**Technological advancements:** The New technologies result in evolved base stations that support upgrades and enhancements such as 4G, 5G and beyond, its providing faster speeds with better bandwidth.

**Emergency services:** They provide access to emergency services, so that in case of emergency, people can call through their mobile phones.

Why are base stations important in cellular communication?

Base stations are important in the cellular communication as it facilitate seamless communication between mobile devices and the network communication. The demand for efficient data transmission are increased as we are advancing towards new technologies such as 5G and other data intensive applications.

How does a base station work?

It usually connects the device to other networks or devices through a dedicated high bandwidth wire of fiber optic connection. Base stations typically have a transceiver, capable of sending and receiving wireless signals; Otherwise if they only send the trailer it will be considered a transmitter or broadcast point only.

What are the properties of a base station?

Here are some essential properties: **Capacity:** Capacity of a base station is its



capability to handle a given number of simultaneous connections or users.

Coverage Area: The coverage area is a base station is that geographical area within which mobile devices can maintain a stable connection with the base station.

What is a 3G base station converter?

In a 3G Base Station application, two converters are used to provide the +27V distribution bus voltage during normal conditions and power outages.



## Does a communication base station need a power supply

---



### Understanding Growth Trends in 5g Communication Base Station ...

The 5G communication base station backup power supply market is experiencing robust growth, projected to reach \$7,070 million in 2025 and exhibiting a Compound Annual Growth Rate ...

[WhatsApp](#)

### Optimizing the power supply design for communication base stations

The design of the power supply system of modern communication base stations is an important part of ensuring the normal operation of the base station, and must be able to ...

[WhatsApp](#)



### Selecting the Right Supplies for Powering 5G Base Stations

Consequently, a company like ADI, which specializes in all aspects of the base station RF chain and has thorough knowledge of power management tools required for powering these ...

[WhatsApp](#)



### Selecting the Right Supplies for Powering 5G Base Stations

As a result, a variety of state-of-the-art power supplies are required to power 5G base station components. Modern FPGAs and processors are





built using advanced nanometer processes ...

[WhatsApp](#)



### Do power dividers in communication base stations need to be ...

1. Power divider in communication base station  
(1) The function of power divider The full name of a power divider is a device that divides the energy of an input signal into two or more equal or ...

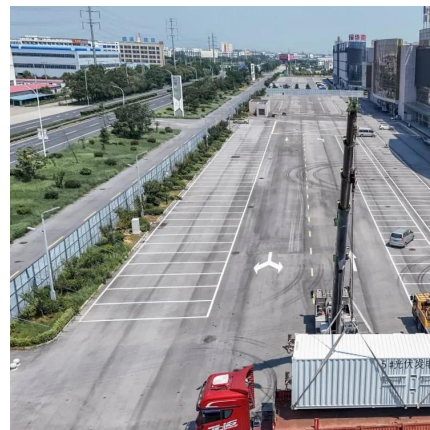
[WhatsApp](#)



### Requirements for UPS Power Supply in Communication Base ...

The UPS power supply for base stations is an essential component of the entire communication power system. It is widely used in the communication industry due to its high ...

[WhatsApp](#)



### Why does the communication base station use -48V power supply?

Communication base stations use -48V power supply for most historical reasons. Historically, the communications industry equipment has been using -48V DC power supply. ...

[WhatsApp](#)





## Selecting the Right Supplies for Powering 5G Base Stations

As a result, a variety of state-of-the-art power supplies are required to power 5G base station components. Modern FPGAs and processors are built using advanced nanometer processes ...

[WhatsApp](#)



## Requirements for UPS Power Supply in Communication Base Stations

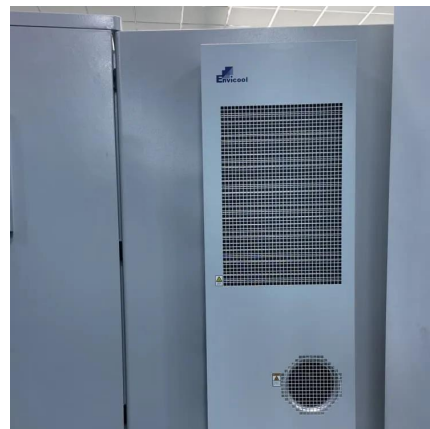
The UPS power supply for base stations is an essential component of the entire communication power system. It is widely used in the communication industry due to its high ...

[WhatsApp](#)

## [How do communication base stations work](#)

Communication base stations, or cell towers, are vital for wireless networks. They consist of antennas, transceivers, controllers, and power supplies to transmit and receive signals. The ...

[WhatsApp](#)



## The power supply design considerations for 5G base stations

The PSU must also be ready to immediately power up, so the radio can immediately resume normal operation, and it must provide this power with minimum voltage transient effects.

[WhatsApp](#)



### [Telecom Base Station Power System Solution](#)

In order to ensure the continuity and efficiency of communication services, the power system of telecommunications base stations needs to have high reliability, stability and high efficiency to ...

[WhatsApp](#)



### **Multi-objective cooperative optimization of communication base station**

Recently, 5G communication base stations have steadily evolved into a key developing load in the distribution network. During the operation process, scientific dispatching ...

[WhatsApp](#)

### **Power Supply Solutions for Wireless Base Stations Applications**

The telecommunications infrastructure and equipment is becoming increasingly more sophisticated, as wireless technology evolves, so does the need for increasingly more reliable ...

[WhatsApp](#)







## CB Radio Base Station Equipment Recommendations and Advice

The basic components for a Base Station CB System include a CB radio, power supply (if you are using a mobile CB radio instead of a base station CB radio), coax, and an antenna. The article ...

[WhatsApp](#)

## [Communications System Power Supply Designs](#)

Voice-over-Internet-Protocol (VoIP), Digital Subscriber Line (DSL), and Third-generation (3G) base stations all necessitate varying degrees of complexity in power supply design. We ...

[WhatsApp](#)



## [Understanding Mobile CB Radio Usage in Homes : Cobra ...](#)

Yes, a mobile CB can be used as a base station. You will need a DC power supply and a base station antenna. The power supply should have an output between 12 to 14 volts ...

[WhatsApp](#)

## Communication Base Station Backup Power Supply , LiFePO4

Why LiFePO4 battery as a backup power supply for the communications industry? 1.The new requirements in the field of communications storage. For a long period of time, ...

[WhatsApp](#)





## Contact Us

---

For catalog requests, pricing, or partnerships, please visit:  
<https://www.straighta.co.za>