

Does a 3kw photovoltaic grid-connected system need a combiner box





Overview

Do grid-connected PV inverters need a backup?

Answers: Grid-connected PV inverters need to synchronize their output with the utility and be able to disconnect the solar system if the grid goes down.

(1) A system that is designed to supplement grid power and not replace it at any time does not need backup, so installation is simplified.

What is a grid-connected PV system block diagram?

Residential grid-connected PV system Block Diagram (Source: Wikipedia) The modules may be connected in series to the inverter if voltage limits are not exceeded, or a separate combiner box may be used to combine the outputs of various modules in parallel.

Can I connect multiple solar panels to a single inverter or charge controller?

This makes it possible to connect more than one solar panel to a single inverter or charge controller. A solar combiner box typically contains fuses or circuit breakers for each input circuit, as well as an output terminal for connecting to the inverter or charge controller.

What is a grid-tied inverter?

A grid-tied inverter is a device that converts direct current (DC) coming from solar modules to alternating current (AC). It is specifically used for solar PV modules and is connected between the power grid and the panels. The converter power is then supplied to the grid to be further used in running devices and appliances.

Does a grid-connected PV system have a battery backup?

Grid-connected PV systems with a battery backup can continue to supply power any time the grid goes down. The system can switch seamlessly to backup power when an electrical outage occurs. Simultaneously, it disconnects the system from the grid so it doesn't send power out when the



grid is down.

What are the outputs of a combiner box?

The outputs of the combiner box are where the combined current from all of the input solar panels will be sent. Again, these will usually be connected via cables with MC4 connectors.



Does a 3kw photovoltaic grid-connected system need a combiner box



From Arrays to Inverters--Here's Your PV System Checklist

If the PV system has a combiner box, it is the next item to check. Make sure it is placed in an easily accessible location and that it is suitable for an outside installation.

[WhatsApp](#)

[Grid-Connected Solar Photovoltaic \(PV\) System](#)

The modules may be connected in series to the inverter if voltage limits are not exceeded, or a separate combiner box may be used to combine the outputs of various modules in parallel.

[WhatsApp](#)



[Calculations for a Grid-Connected Solar Energy System](#)

The grid-connected system consists of a solar photovoltaic array mounted on a racking system (such as a roof-mount, pole mount, or ground mount), connected to a combiner box, and a ...

[WhatsApp](#)

[Is a Solar Combiner Box Necessary \(How to Choose\)](#)

A solar combiner box is not necessary for all PV systems, but it may be required for larger systems, or for systems that have a high voltage



drop between the panels and the ...

[WhatsApp](#)



[How to connect a PV solar system to the utility grid](#)

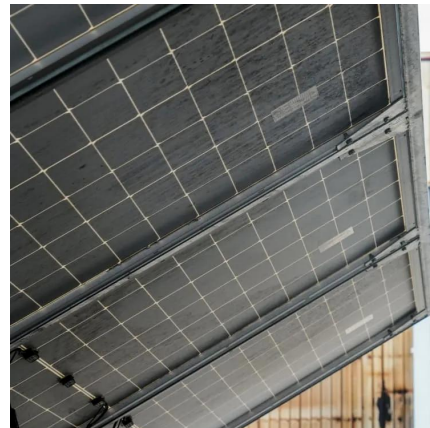
An adequately sized PV service disconnect box must be used before making the connection. Some inverters include the disconnect or an external disconnect can be added cheaply.

[WhatsApp](#)



[Photovoltaic system: electrical equipments selection](#)

This design is very similar to the three phase inverter with one string combiner box except that it has more arrays, which requires array cable protection. Istc [WhatsApp](#)



Contact Us

For catalog requests, pricing, or partnerships, please visit:
<https://www.straighta.co.za>