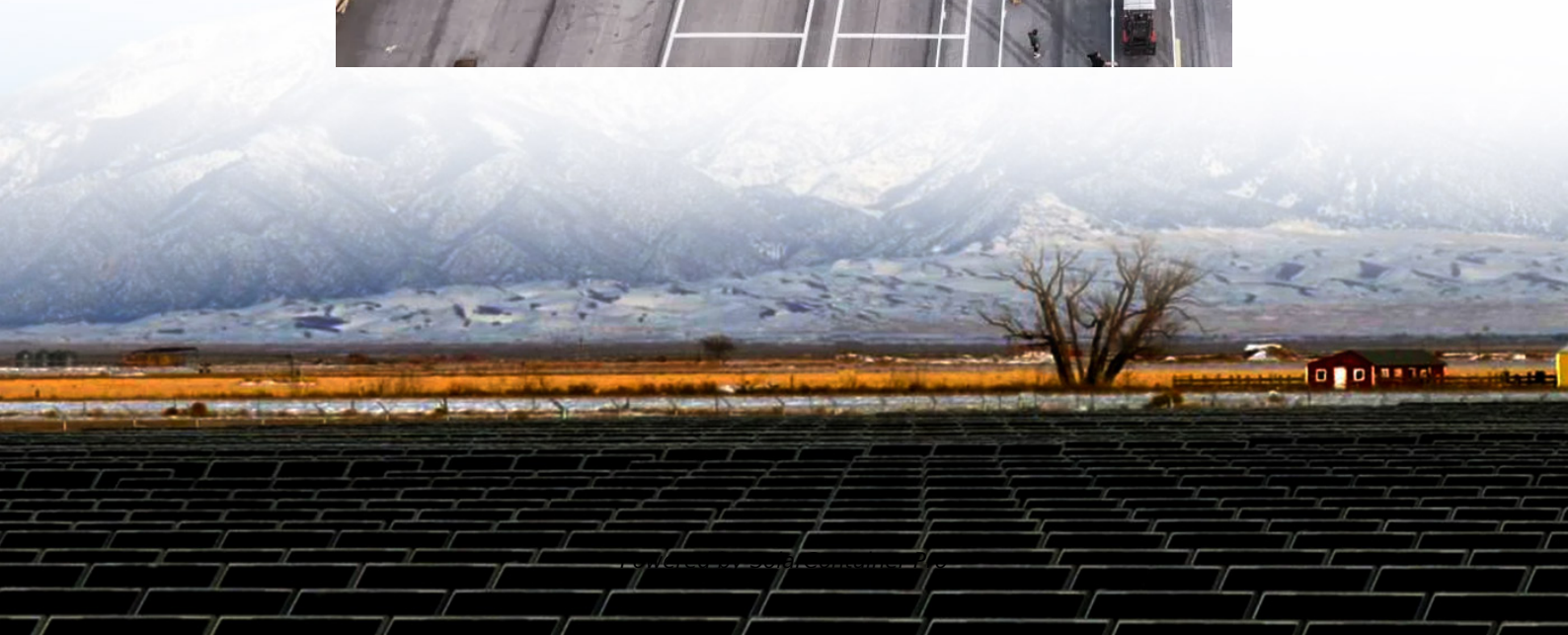
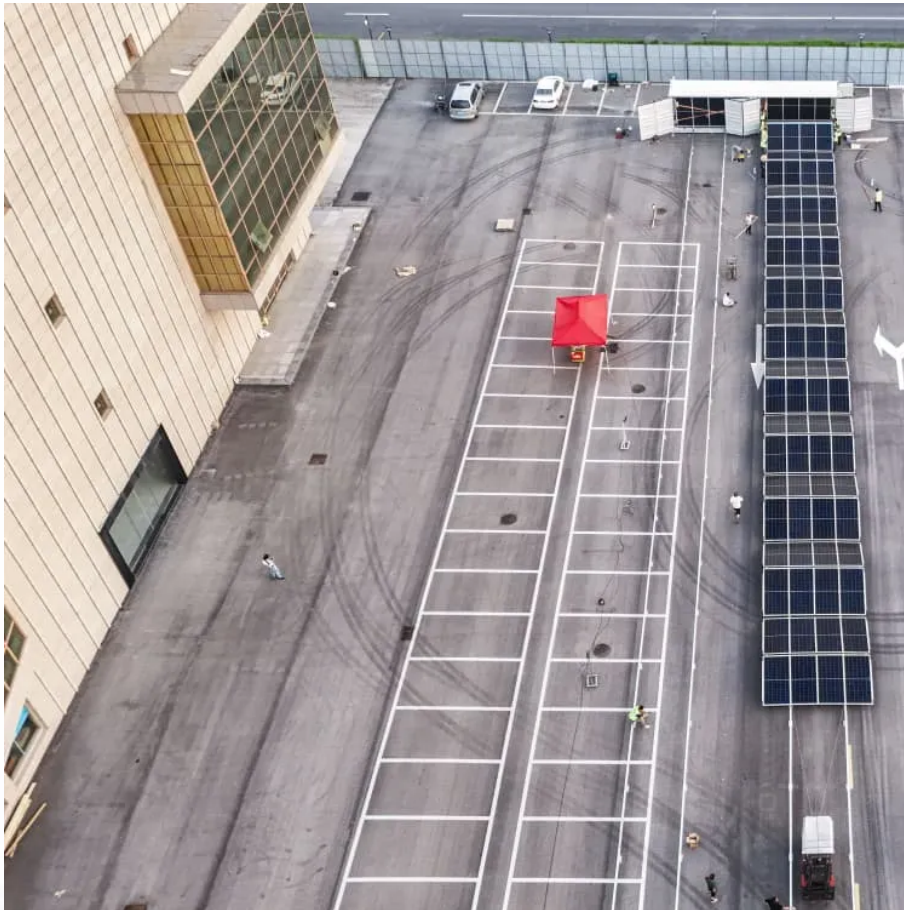


Does 5G micro base station consume power





Overview

Are 5G base stations causing more energy consumption?

However, Li says 5G base stations are carrying five times the traffic as when equipped with only 4G, pushing up power consumption. The carrier is seeking subsidies from the Chinese government to help with the increased energy usage.

How much power does a 5G station use?

The power consumption of a single 5G station is 2.5 to 3.5 times higher than that of a single 4G station. The main factor behind this increase in 5G power consumption is the high power usage of the active antenna unit (AAU). Under a full workload, a single station uses nearly 3700W.

Why does 5G use more power than 4G?

The data here all comes from operators on the front lines, and we can draw the following valuable conclusions: The power consumption of a single 5G station is 2.5 to 3.5 times higher than that of a single 4G station. The main factor behind this increase in 5G power consumption is the high power usage of the active antenna unit (AAU).

Does China Mobile have a 5G base station?

China Mobile has tried using lower cost deployments of MIMO antennas, specifically 32T32R and sometimes 8T8R rather than 64T64R, according to MTN. However, Li says 5G base stations are carrying five times the traffic as when equipped with only 4G, pushing up power consumption.

What is a 5G base station?

A 5G base station is mainly composed of the baseband unit (BBU) and the AAU — in 4G terms, the AAU is the remote radio unit (RRU) plus antenna. The role of the BBU is to handle baseband digital signal processing, while the AAU converts the baseband digital signal into an analog signal, and then



modulates it into a high-frequency radio signal.

Will 5G power micro data centers?

“Schneider Electric predicts that with 5G, the power distribution will require hundreds of thousands or even millions of micro data centers globally,” according to MTN. “Powering these sites will add to the telco utility bill and add a layer of complexity to network operations as edge power costs need to be minimized.”



Does 5G micro base station consume power



[Minimalni tehnički uvjeti \(MTU\) - Sve što trebate znati](#)

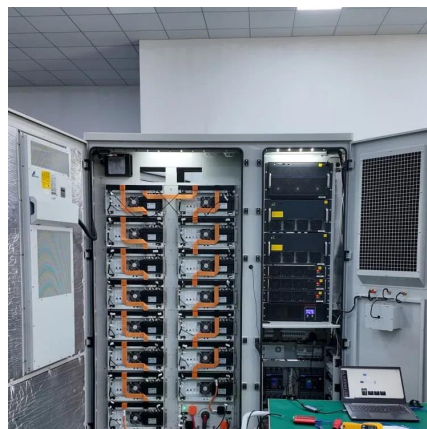
Kod registriranja tvrtke ili obrta za obavljanje djelatnosti iz područja ugostiteljstva, trgovine, turizma itd. nužno je prije početka rada ishoditi rješenje o zadovoljavanju minimalnih ...

[WhatsApp](#)

5G base stations use a lot more energy than 4G base stations: MTN

"Schneider Electric predicts that with 5G, the power distribution will require hundreds of thousands or even millions of micro data centers globally," according to MTN.

[WhatsApp](#)



A technical look at 5G energy consumption and performance

The model shows that there is significant energy consumption in the base station even at the times when there is no output power i.e. when the base station is in an idle state.

[WhatsApp](#)



How Much Power Does 5G Base Station Consume? , Huijue ...

Have you ever wondered how much energy our hyper-connected world is consuming? 5G base stations, the backbone of next-gen connectivity,



now draw 3-4 times more power than their 4G ...

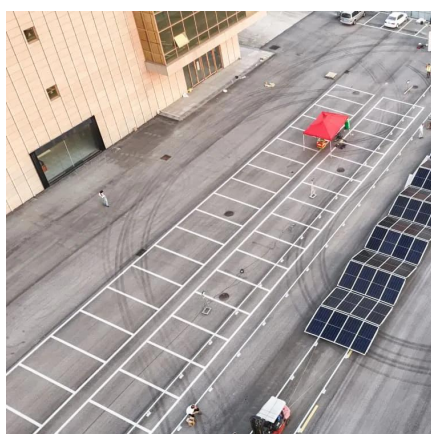
[WhatsApp](#)



[Dynamic Power Management for 5G Small Cell Base Station](#)

5G networks with small cell base stations are attracting significant attention, and their power consumption is a matter of significant concern. As the increase of the expectation, concern for ...

[WhatsApp](#)



[MTU Size: What Is It and What Should It Be Set To?](#)

MTU size is the maximum packet size that can be transmitted over your network. Finding the best MTU size and changing it is worth doing should you experience a decrease in ...

[WhatsApp](#)



Minimalni tehnički uvjeti prilikom otvaranja tvrtke ili obrta

Obrtnici i poduzetnici u sektorima ugostiteljstva, trgovine i turizma dužni su pribaviti rješenje o ispunjavanju MTU-a kako bi mogli započeti poslovanje. Njihovo ispunjavanje osigurava ...

[WhatsApp](#)





[Front Line Data Study about 5G Power Consumption](#)

The power consumption of a single 5G station is 2.5 to 3.5 times higher than that of a single 4G station. The main factor behind this increase in 5G power consumption is the high power ...

[WhatsApp](#)



Why does 5g base station consume so much power and how to ...

5G base stations use high power consumption and high RF signals, which require more signal processing for digital and electromechanical units, and also put greater pressure ...

[WhatsApp](#)

Quick guide: components for 5G base stations and antennas

Base stations A 5G network base-station connects other wireless devices to a central hub. A look at 5G base-station architecture includes various equipment, such as a 5G ...

[WhatsApp](#)



How Much Power Does a 5G Base Station Consume? - Smart Solar

The rise of 5G technology brings faster speeds and lower latency, but it also raises questions about its energy consumption. As 5G networks are rolled out across the globe, it is important ...

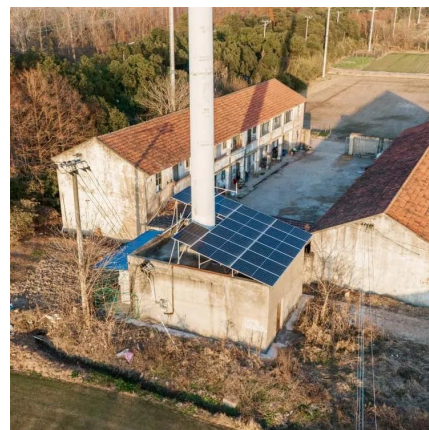
[WhatsApp](#)



How Much Power Does a 5G Base Station Consume? - Smart Solar

On average, a 5G base station consumes between 1,000 to 3,000 watts. This is significantly higher than 4G base stations, which typically consume 500 to 1,500 watts.

[WhatsApp](#)



5G Base Stations: The Energy Consumption Challenge

Although the energy consumption of 5G base stations is higher than any previous generations, technology and strategy innovations mentioned above would help MNOs stabilize or even ...

[WhatsApp](#)

Minimalni tehnički uvjeti - Sve informacije o minimalnim tehničkim

Ministarstvo gospodarstva najavilo je natječaj za dodjelu vouchera za sufinanciranje izrade ili redizajna internetskih stranica tvrtke te web shopova za prodaju vlastitih proizvoda i usluga za ...

[WhatsApp](#)





Contact Us

For catalog requests, pricing, or partnerships, please visit:
<https://www.straighta.co.za>