

Do signal base stations need energy supply





Overview

Base stations require energy storage primarily for efficient energy management, uninterrupted power supply, renewable energy integration, and enhanced operational resilience. Energy storage systems enhance base station reliability, especially in remote or underserved areas. Why do I need a base station?

The base stations are because external tracking works much better than internal. I received my Valve Index setup today, but there are no cables to connect the base station (s) to the PC. They included the power supply for them, but the only USB cables that were included are the USB-C cables for the controllers.

Do I need a local base station?

So if the reference station is located too far or simply is absent in the area you will need a local base station. Other advantages of your own base are independence from the Internet connection and lack of NTRIP subscription fees.

What is a base station?

Base stations are often referred to as towers or cell sites, but they are literally the equipment that houses the radio transmitters and receivers that carry the signal to wireless carriers. Base stations transmit signals from one cell site to the next.

Does a cellular base station emit RF energy?

The tower itself doesn't emit any RF energy; in fact the area directly surrounding a cellular base station is exposed to less RF energy than areas further out, as the antenna radiates in a fan or wedge shape outward from the source.

Is a cellular base station safe?



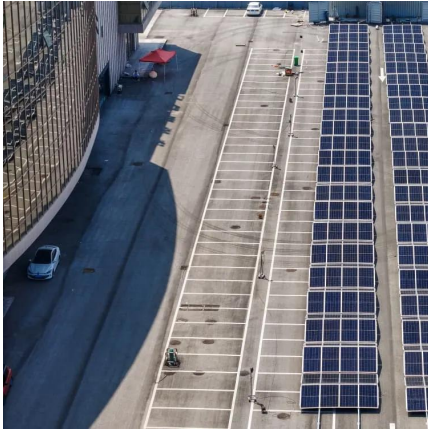
Like other radio towers, such as those used in broadcast radio and television, the use and construction of a cellular base station is regulated by the FCC, and the RF energy levels it can produce fall well below levels considered to pose a threat to health. The antennas themselves must be kept inaccessible to the public, and at a safe range.

Are base stations dangerous?

This includes base stations, cell sites, and mobile devices. Since the base station and the devices connected to utilize low power radio waves, they aren't considered to be dangerous, so long as the antenna portion of the station is kept at a safe distance from anyone nearby.



Do signal base stations need energy supply



How Solar Energy Systems are Revolutionizing Communication ...

Energy consumption is a big issue in the operation of communication base stations, especially in remote areas that are difficult to connect with the traditional power grid, ...

[WhatsApp](#)

[Why do base stations need energy storage?..](#) [NenPower](#)

Base stations are critical for communication networks, and any power disruption can lead to significant service outages. In areas prone to power outages or unstable grid ...

[WhatsApp](#)



Telecommunication base station system working principle and ...

When the output mains power is cut off, the rectifier module stops working, and the solar energy cannot supply power normally. The system output load is powered by the battery ...

[WhatsApp](#)



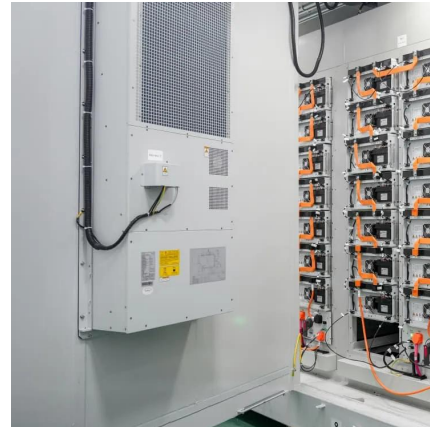
Revolutionising Connectivity with Reliable Base Station Energy ...

Yet behind every stable cellular signal lies a powerful but often overlooked technology: energy storage. For telecom infrastructure,



especially in remote or unstable-grid ...

[WhatsApp](#)



Selecting the Right Supplies for Powering 5G Base Stations

As a result, a variety of state-of-the-art power supplies are required to power 5G base station components. Modern FPGAs and processors are built using advanced nanometer processes ...

[WhatsApp](#)



How Solar Energy Systems are Revolutionizing Communication Base

Energy consumption is a big issue in the operation of communication base stations, especially in remote areas that are difficult to connect with the traditional power grid, ...

[WhatsApp](#)



[How solar-powered base station signals are transmitted](#)

This ensures a consistent power supply, even in remote or off-grid locations. The integration of solar energy not only supports the operational needs of base stations but also ...

[WhatsApp](#)





CB Radio Base Station Equipment Recommendations and Advice

The basic components for a Base Station CB System include a CB radio, power supply (if you are using a mobile CB radio instead of a base station CB radio), coax, and an antenna. The article ...

[WhatsApp](#)



Why Do Base Stations Need Energy Storage? The Power Behind Your Signal

Telecom engineers, sustainability advocates, and curious tech enthusiasts will discover how energy storage keeps base stations humming - even when the grid throws a tantrum.

[WhatsApp](#)

Selecting the Right Supplies for Powering 5G Base Stations

As a result, a variety of state-of-the-art power supplies are required to power 5G base station components. Modern FPGAs and processors are built using advanced nanometer processes ...

[WhatsApp](#)



An Introduction to 5G and How MPS Products Can Optimize ...

The satellite receives the signal from your closest base station, then the satellite sends a new signal to the base station closest to your friend's device, such as a smartwatch. When your ...

[WhatsApp](#)



Why Do Base Stations Need Energy Storage? The Power Behind ...

Telecom engineers, sustainability advocates, and curious tech enthusiasts will discover how energy storage keeps base stations humming - even when the grid throws a tantrum.

[WhatsApp](#)



Contact Us

For catalog requests, pricing, or partnerships, please visit:
<https://www.straighta.co.za>