

# Do all communication base stations use batteries





## Overview

---

Which battery is best for telecom base station backup power?

Among various battery technologies, Lithium Iron Phosphate (LiFePO<sub>4</sub>) batteries stand out as the ideal choice for telecom base station backup power due to their high safety, long lifespan, and excellent thermal stability.

What makes a telecom battery pack compatible with a base station?

Compatibility and Installation Voltage Compatibility: 48V is the standard voltage for telecom base stations, so the battery pack's output voltage must align with base station equipment requirements. Modular Design: A modular structure simplifies installation, maintenance, and scalability.

What is a communication base station?

Communication base station setups will usually include a wide array of different technologies, including power supplies, data servers, head end, radio repeaters, and communication systems that allow for high-speed continuous information flow. It can also be used as part of a leaky feeder system in the communication network.

How do you protect a telecom base station?

Backup power systems in telecom base stations often operate for extended periods, making thermal management critical. Key suggestions include:  
Cooling System: Install fans or heat sinks inside the battery pack to ensure efficient heat dissipation.

Why is backup power important in a 5G base station?

With the rapid expansion of 5G networks and the continuous upgrade of global communication infrastructure, the reliability and stability of telecom base stations have become critical. As the core nodes of communication networks, the performance of a base station's backup power system directly impacts network continuity and service quality.



What makes a good battery management system?

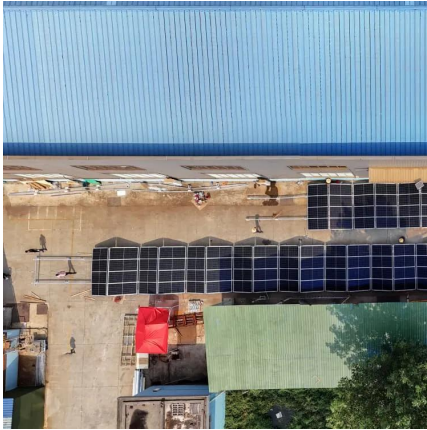
A well-designed BMS should include: Voltage Monitoring: Real-time monitoring of each cell's voltage to prevent overcharging or over-discharging.

Temperature Management: Built-in temperature sensors to monitor the battery pack's temperature, preventing overheating or operation in extreme cold.



## Do all communication base stations use batteries

---



### Energy-Efficient Base Stations , part of Green Communications

With the explosion of mobile Internet applications and the subsequent exponential increase of wireless data traffic, the energy consumption of cellular networks has rapidly caught the ...

[WhatsApp](#)

### Selection and maintenance of batteries for communication base ...

The engineering application of battery power supplies will play an increasingly important role in the construction and maintenance of communication base stations.

[WhatsApp](#)



### Telecom Base Station Backup Power Solution: Design Guide for ...

Among various battery technologies, Lithium Iron Phosphate (LiFePO4) batteries stand out as the ideal choice for telecom base station backup power due to their high safety, ...

[WhatsApp](#)

### [Communication Base Station Backup Power Selection Guide](#)

Why Backup Power Systems Are the Lifeline of Modern Telecom Networks? When a typhoon knocks out grid power across Southeast Asia,



how do operators ensure communication base ...

[WhatsApp](#)



### Evaluating the Dispatchable Capacity of Base Station Backup Batteries

Cellular base stations (BSs) are equipped with backup batteries to obtain the uninterruptible power supply (UPS) and maintain the power supply reliability. While maintaining the reliability, ...

[WhatsApp](#)



### Global Communication Base Station Battery Trends: Region ...

Integrated base stations are typically larger and require higher capacity batteries, while distributed base stations, being smaller and more numerous, present different power needs.

[WhatsApp](#)



### Selection and maintenance of batteries for communication base stations

The engineering application of battery power supplies will play an increasingly important role in the construction and maintenance of communication base stations.

[WhatsApp](#)

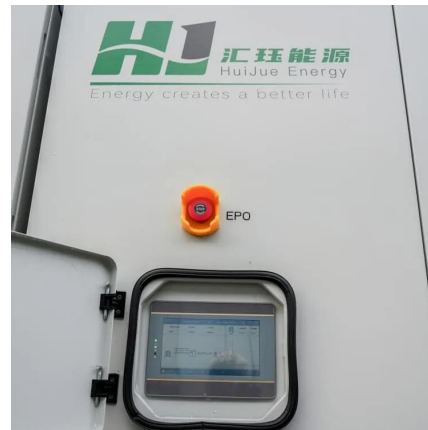




## Communication Base Station Li-ion Battery Market's Strategic ...

The Communication Base Station Li-ion Battery market is experiencing robust growth, driven by the expanding global telecommunications infrastructure and the increasing ...

[WhatsApp](#)



## What are base station energy storage batteries used for?

Innovations in battery technologies, such as lithium-sulfur or solid-state batteries, promise higher energy densities and improved lifespan, thereby enhancing the operational ...

[WhatsApp](#)

## Understanding Backup Battery Requirements for Telecom Base Stations

Telecom base stations require reliable backup power to ensure uninterrupted communication services. Selecting the right backup battery is crucial for network stability and ...

[WhatsApp](#)



## What Are the Critical Aspects of Telecom Base Station Backup Batteries?

Telecom base station backup batteries are essential for ensuring uninterrupted communication by providing reliable, long-lasting power during outages. Critical aspects ...

[WhatsApp](#)



### **Environmental feasibility of secondary use of electric vehicle ...**

Abstract Repurposing spent batteries in communication base stations (CBSs) is a promising option to dispose massive spent lithium-ion batteries (LIBs) from electric vehicles ...

[WhatsApp](#)



### **Multi-objective cooperative optimization of communication base station**

This paper develops a method to consider the multi-objective cooperative optimization operation of 5G communication base stations and Active Distribution Network ...

[WhatsApp](#)

### **What Are the Critical Aspects of Telecom Base Station Backup ...**

Telecom base station backup batteries are essential for ensuring uninterrupted communication by providing reliable, long-lasting power during outages. Critical aspects ...

[WhatsApp](#)





### **Energy Storage in Telecom Base Stations: Innovations & Trends**

Energy storage is no longer just a backup power source for communication base stations; it's a strategic asset enabling greater resilience, cost efficiency, and environmental responsibility.

[WhatsApp](#)

### [Battery technology for communication base stations](#)

In order to ensure the reliability of communication, 5G base stations are usually equipped with lithium iron phosphate cascade batteries with high energy density and high charge and ...

[WhatsApp](#)



### **What is a base station energy storage battery? , NenPower**

Base station energy storage batteries offer vital support to enhance the stability of both telecommunications and electrical grids. During power outages or disruptions, these ...

[WhatsApp](#)

## **Contact Us**

---

For catalog requests, pricing, or partnerships, please visit:  
<https://www.straighta.co.za>