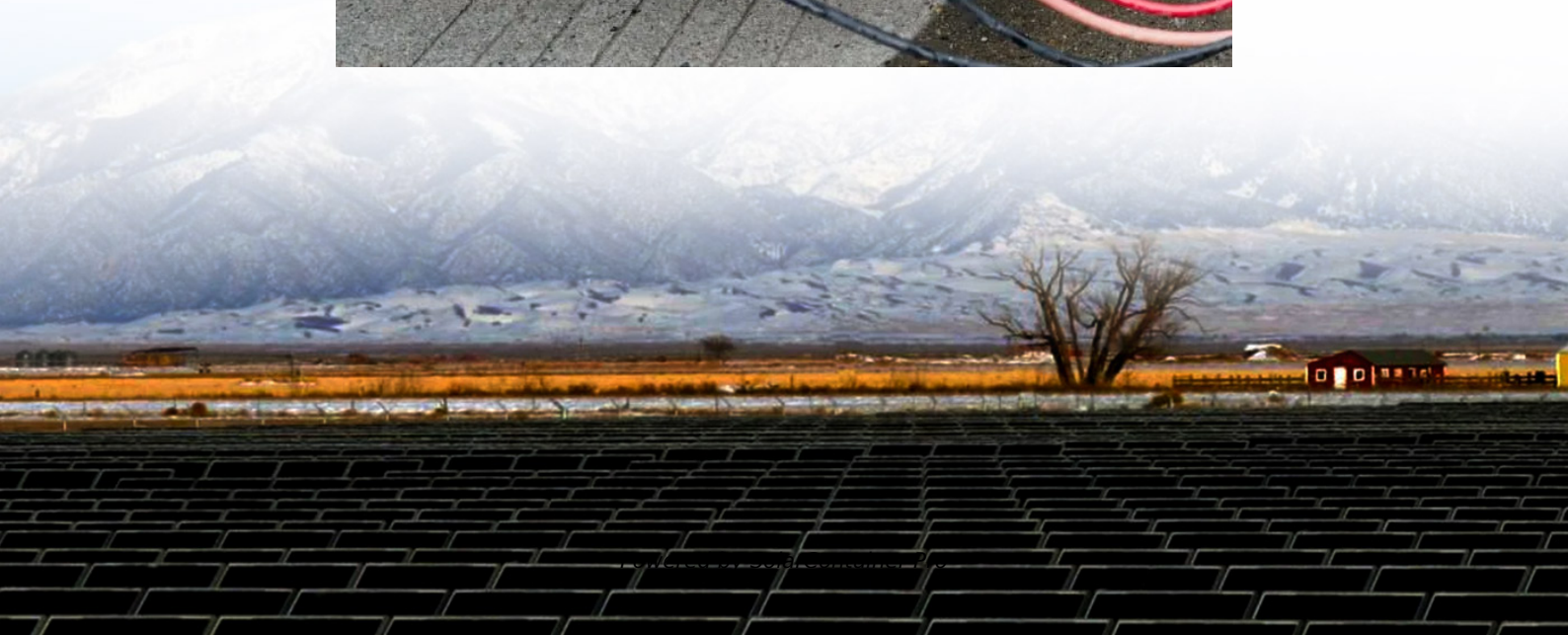


# **Do 5G base stations consume power quickly**





## Overview

---

How much power does a 5G station use?

The power consumption of a single 5G station is 2.5 to 3.5 times higher than that of a single 4G station. The main factor behind this increase in 5G power consumption is the high power usage of the active antenna unit (AAU). Under a full workload, a single station uses nearly 3700W.

Is 5G more energy efficient than 4G?

Although the absolute value of the power consumption of 5G base stations is increasing, their energy efficiency ratio is much lower than that of 4G stations. In other words, with the same power consumption, the network capacity of 5G will be as dozens of times larger than 4G, so the power consumption per bit is sharply reduced.

Why does 5G use so much power?

The main factor behind this increase in 5G power consumption is the high power usage of the active antenna unit (AAU). Under a full workload, a single station uses nearly 3700W. This necessitates a number of updates to existing networks, such as more powerful supplies and increased performance output from supporting facilities.

How much power will a 5G base station use in 2025?

The Small Cell Forum predicts the installed base of small cells to reach 70.2 million in 2025 and the total installed base of 5G or multimode small cells in 2025 to be 13.1 million. "A 5G base station is generally expected to consume roughly three times as much power as a 4G base station.

What is a 5G base station?

A 5G base station is mainly composed of the baseband unit (BBU) and the AAU — in 4G terms, the AAU is the remote radio unit (RRU) plus antenna. The role of the BBU is to handle baseband digital signal processing, while the AAU



converts the baseband digital signal into an analog signal, and then modulates it into a high-frequency radio signal.

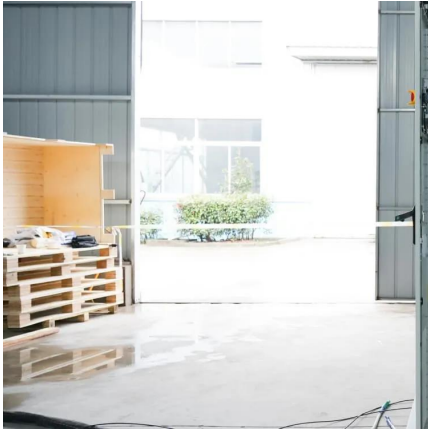
How much energy does a 5G small cell BS consume?

Simulation results reveal that more than 50% of the energy is consumed by the computation power at 5G small cell BS's. Moreover, the computation power of 5G small cell BS can approach 800 watt when the massive MIMO (e.g., 128 antennas) is deployed to transmit high volume traffic.



## Do 5G base stations consume power quickly

---



### **Why does 5g base station consume so much power and how to ...**

5G base stations use high power consumption and high RF signals, which require more signal processing for digital and electromechanical units, and also put greater pressure ...

[WhatsApp](#)

### [Battery life and energy storage for 5G equipment](#)

In theory, 5G smartphones will be less taxed than current smartphones. This is because a 5G network with local 5G base stations will dramatically increase computation speeds and enable ...

[WhatsApp](#)



### **How Much Power Does a 5G Base Station Consume? - Smart Solar**

The rise of 5G technology brings faster speeds and lower latency, but it also raises questions about its energy consumption. As 5G networks are rolled out across the globe, it is important ...

[WhatsApp](#)



### [How Much Power Does 5G Base Station Consume?](#)

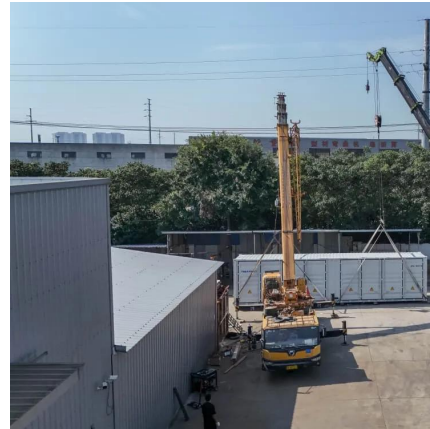
Have you ever wondered how much energy our hyper-connected world is consuming? 5G base stations, the backbone of next-gen connectivity,





now draw 3-4 times more power than their 4G ...

[WhatsApp](#)



### Macrocell vs. Small Cell vs. Femtocell: A 5G introduction

5G networks also use macrocells, such as cell towers, for connectivity. These larger base stations enable lower 5G frequencies, compared to small cells' high-frequency ...

[WhatsApp](#)

### Energy Consumption of 5G, Wireless Systems and the Digital ...

"A 5G base station is generally expected to consume roughly three times as much power as a 4G base station. And more 5G base stations are needed to cover the same area," -IEEE ...

[WhatsApp](#)



### Building Better Power Supplies For 5G Base Stations

Building Better Power Supplies For 5G Base Stations by Alessandro Pevere, and Francesco Di Domenico, Infineon Technologies, Villach, Austria according to Ofcom, the UK's telecoms ...

[WhatsApp](#)



### [5G Base Stations: The Energy Consumption Challenge](#)

Early deployments indicate that 5G base stations require 2.5-3.5 times more power compared to a 4G one. Moreover, C-band, i.e., 3.4 GHz to 4.2 GHz, is deemed as the most popular 5G ...

[WhatsApp](#)



### [Front Line Data Study about 5G Power Consumption](#)

The power consumption of a single 5G station is 2.5 to 3.5 times higher than that of a single 4G station. The main factor behind this increase in 5G power consumption is the high power ...

[WhatsApp](#)



### **How Much Power Does a 5G Base Station Consume? - Smart Solar**

On average, a 5G base station consumes between 1,000 to 3,000 watts. This is significantly higher than 4G base stations, which typically consume 500 to 1,500 watts.

[WhatsApp](#)



### **A technical look at 5G energy consumption and performance**

5G Base Station Power Consumption: With each base station carrying at least 5X more traffic and operating over more frequency bands, 5G base station power consumption is at least twice ...

[WhatsApp](#)



### **A technical look at 5G energy consumption and performance**

To understand this, we need to look closer at the base station power consumption characteristics (Figure 3). The model shows that there is significant energy consumption in the ...

[WhatsApp](#)



### **The Impact of 5G Base Station Construction on the Demand for ...**

The chips, power amplifiers, and other components in a 5G base station generate much more heat than those in a typical 4G setup. Furthermore, the deployment of edge ...

[WhatsApp](#)



## **Contact Us**

For catalog requests, pricing, or partnerships, please visit:  
<https://www.straighta.co.za>