

Daily power consumption of 5G base stations in Moldova





Overview

In this post, we explore the energy saving features of 5G New Radio and how this enables operators to build denser networks, meet performance demands and maintain low 5G energy consumption.

How much power does a 5G station use?

The power consumption of a single 5G station is 2.5 to 3.5 times higher than that of a single 4G station. The main factor behind this increase in 5G power consumption is the high power usage of the active antenna unit (AAU). Under a full workload, a single station uses nearly 3700W.

Should power consumption models be used in 5G networks?

This restricts the potential use of the power models, as their validity and accuracy remain unclear. Future work includes the further development of the power consumption models to form a unified evaluation framework that enables the quantification and optimization of energy consumption and energy efficiency of 5G networks.

Can machine learning predict energy consumption for 5g/4g radio base stations?

To further develop energy modelling methodology and attempt to answer the questions presented in the previous section, different machine learning algorithm's ability to predict energy consumption is investigated for 5G/4G radio base stations.

Is 5G base station power consumption accurate?

Abstract—The energy consumption of the fifth generation (5G) of mobile networks is one of the major concerns of the telecom industry. However, there is not currently an accurate and tractable approach to evaluate 5G base stations (BSs) power consumption. In this article, we pr.

Is 5G more energy efficient than 4G?

Although the absolute value of the power consumption of 5G base stations is



increasing, their energy efficiency ratio is much lower than that of 4G stations. In other words, with the same power consumption, the network capacity of 5G will be as dozens of times larger than 4G, so the power consumption per bit is sharply reduced.

Does a balanced dataset improve energy prediction of 5G base stations?

For energy prediction of 5G base stations, this thesis finds that using a more balanced dataset, in terms of the number of samples for each product, has a positive impact for the ANN and the Gradient Boosted Trees model while the linear regression performs worse.



Daily power consumption of 5G base stations in Moldova



Peak power shaving in hybrid power supplied 5G base station

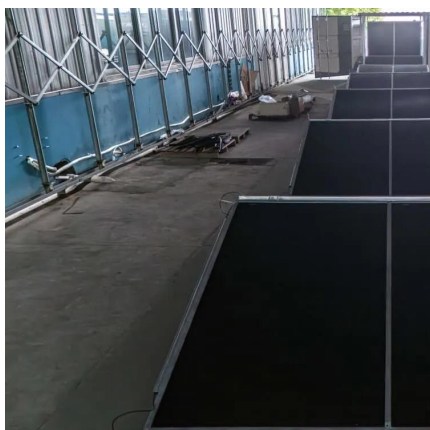
The high-power consumption and dynamic traffic demand overburden the base station and consequently reduce energy efficiency. In this paper, an energy-efficient hybrid power supply ...

[WhatsApp](#)

Modelling the 5G Energy Consumption using Real-world Data: ...

This paper proposes a novel 5G base stations energy consumption modelling method by learning from a real-world dataset used in the ITU 5G Base Station Energy Consumption Modelling ...

[WhatsApp](#)



Comparison of Power Consumption Models for 5G Cellular ...

Power consumption models for base stations are briefly discussed as part of the development of a model for life cycle assessment. An overview of relevant base station power ...

[WhatsApp](#)

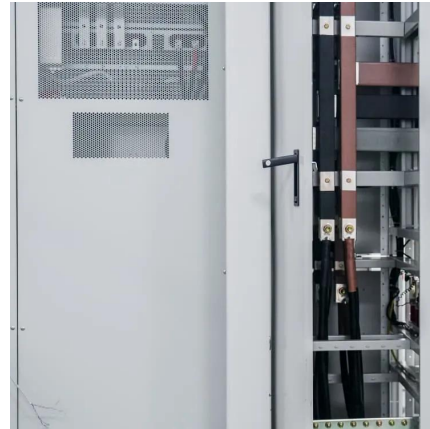
[Parsing the 5G power equation: Is 5G actually greener?](#)

On a watt/bit basis, 5G is more power efficient than 4G. When the conversation turns to 5G's potential to be a "greener" technology than



previous generations, the subject of ...

[WhatsApp](#)



Energy-efficiency schemes for base stations in 5G heterogeneous

In today's 5G era, the energy efficiency (EE) of cellular base stations is crucial for sustainable communication. Recognizing this, Mobile Network Operators are actively prioritizing EE for ...

[WhatsApp](#)



[How Much Power Does 5G Base Station Consume?](#)

Have you ever wondered how much energy our hyper-connected world is consuming? 5G base stations, the backbone of next-gen connectivity, now draw 3-4 times more power than their 4G ...

[WhatsApp](#)



Comparison of Power Consumption Models for 5G Cellular Network Base

Power consumption models for base stations are briefly discussed as part of the development of a model for life cycle assessment. An overview of relevant base station power ...

[WhatsApp](#)

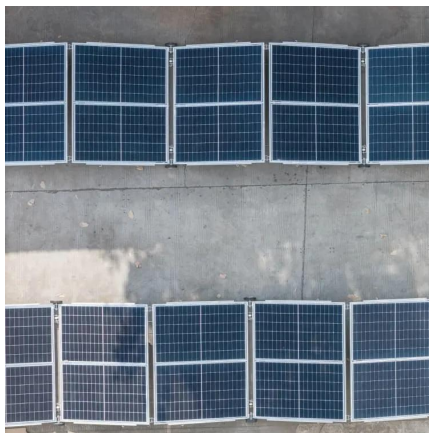




[Front Line Data Study about 5G Power Consumption](#)

The power consumption of a single 5G station is 2.5 to 3.5 times higher than that of a single 4G station. The main factor behind this increase in 5G power consumption is the high power ...

[WhatsApp](#)



Energy Consumption Modelling for 5G Radio Base Stations ...

In this thesis linear regression is compared with the gradient boosted trees method and a neural network to see how well they are able to predict energy consumption from field data of 5G ...

[WhatsApp](#)

Power Consumption Modeling of 5G Multi-Carrier Base Stations: ...

However, there is still a need to understand the power consumption behavior of state-of-the-art base station architectures, such as multi-carrier active antenna units (AAUs), ...

[WhatsApp](#)



Energy Consumption of 5G, Wireless Systems and the Digital ...

Reports on the Increasing Energy Consumption of Wireless Systems and Digital Ecosystem The more we use wireless electronic devices, the more energy we will consume. 5G will ...

[WhatsApp](#)



Analysis of power consumption in standalone 5G network and ...

This paper proposes two modified power consumption models that would accurately depict the power consumption for a 5G base station in a standalone network and a novel ...

[WhatsApp](#)



AI-based energy consumption modeling of 5G base stations: an ...

The energy consumption of 5G networks is one of the pressing concerns in green communications. Recent research is focused towards energy saving techniques of base ...

[WhatsApp](#)

Machine Learning and Analytical Power Consumption Models for 5G Base

The energy consumption of the fifth generation (5G) of mobile networks is one of the major concerns of the telecom industry. However, there is not currently an accurate and ...

[WhatsApp](#)





A technical look at 5G energy consumption and performance

In this post, we explore the energy saving features of 5G New Radio and how this enables operators to build denser networks, meet performance demands and maintain low 5G ...

[WhatsApp](#)

[5G Base Stations: The Energy Consumption Challenge](#)

Although the energy consumption of 5G base stations is higher than any previous generations, technology and strategy innovations mentioned above would help MNOs stabilize or even ...

[WhatsApp](#)



[Machine Learning and Analytical Power Consumption ...](#)

roduce a new power consumption model for 5G active antenna units (AAUs), the highest power consuming component of a BS1 and in turn of a mobile network. I. particular, we present an ...

[WhatsApp](#)

[5G Base Stations: The Energy Consumption Challenge](#)

When considering the deployment of a 5G base station, COTs server plus acceleration card (s) based baseband processing architecture still cannot compete with the ASIC or SoC based ...

[WhatsApp](#)



5G Base Station Power Consumption Using Machine Learning

This project explores the application of machine learning and deep learning techniques to develop a predictive framework for forecasting power consumption, aiming to support energy providers ...

[WhatsApp](#)



Power consumption analysis of access network in 5G mobile ...

The architectural differences of these networks are highlighted and power consumption analytical models that characterize the energy consumption of radio resource ...

[WhatsApp](#)



Energy Management of Base Station in 5G and B5G: Revisited

Since mmWave base stations (gNodeB) are typically capable of radiating up to 200-400 meters in urban locality. Therefore, high density of these stations is required for actual 5G deployment, ...

[WhatsApp](#)





Final draft of deliverable D.WG3-02-Smart Energy Saving of ...

Change Log This document contains Version 1.0 of the ITU-T Technical Report on "Smart Energy Saving of 5G Base Station: Based on AI and other emerging technologies to forecast and ...

[WhatsApp](#)



Contact Us

For catalog requests, pricing, or partnerships, please visit:
<https://www.straighta.co.za>