

Construction of communication base station inverters in the United States





Overview

Why are base stations important in cellular communication?

Base stations are important in the cellular communication as it facilitate seamless communication between mobile devices and the network communication. The demand for efficient data transmission are increased as we are advancing towards new technologies such as 5G and other data intensive applications.

What is a base station?

What is Base Station?

A base station represents an access point for a wireless device to communicate within its coverage area. It usually connects the device to other networks or devices through a dedicated high bandwidth wire of fiber optic connection. Base stations typically have a transceiver, capable of sending and receiving wireless signals;.

Why do we need a base station?

Technological advancements: The New technologies result in evolved base stations that support upgrades and enhancements such as 4G, 5G and beyond, its providing faster speeds with better bandwidth. Emergency services: They provide access to emergency services, so that in case of emergency, people can call through their mobile phones.

What are the properties of a base station?

Here are some essential properties: Capacity: Capacity of a base station is its capability to handle a given number of simultaneous connections or users. Coverage Area: The coverage area is a base station is that geographical area within which mobile devices can maintain a stable connection with the base station.

What are the different types of base stations?



Some basic types of base stations are as follows: Macro-base stations are tall towers ranging from 50 to 200 feet in height, placed at strategic locations to provide maximum coverage in a given area. Those are equipped with large towers and antennas that transmit and receive radio signals from wireless devices.

What are the components of a base station?

Power Supply: The power source provides the electrical energy to base station elements. It often features auxiliary power supply mechanisms that guarantee operation in case of lost or interrupted electricity, during blackouts. **Baseband Processor:** The baseband processor is responsible for the processing of the digital signals.



Construction of communication base station inverters in the United



[MAXSCEND 5G Communication Base Station RF Device ...](#)

MAXSCEND's 5G communication base station RF device industrialization project is of great significance and has various features, which are introduced below: Project Background.

[WhatsApp](#)

U.S. Authorities Investigate Communication Devices in Solar Power Inverters

U.S. energy officials have intensified scrutiny of Chinese-manufactured components in renewable energy infrastructure after the identification of undocumented ...

[WhatsApp](#)



Investigating the Sustainability of the 5G Base Station Overhaul ...

5G is a high-bandwidth low-latency communication technology that requires deploying new cellular base stations. The environmental cost of deploying a 5G cellula.

[WhatsApp](#)

[Breaking Down Base Stations - A Guide to Cellular Sites](#)

A lattice or self-supporting tower uses a square or triangular base and a triangular grid configuration of steel beams to offer improved



flexibility and stability. Due to their superior ...

[WhatsApp](#)



Investigating the Sustainability of the 5G Base Station ...

In this work we answer several questions about the environmental impact of 5G deployment, including: Can we reuse minerals from discarded 4G base stations to build 5G or does 5G ...

[WhatsApp](#)



5G Base Station Construction Market in United States

The global 5G base station construction market is expected to grow with a CAGR of 25.7% from 2025 to 2031. The 5G base station construction market in United States is also forecasted to ...

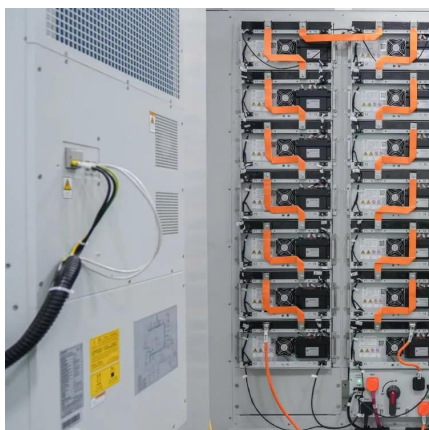
[WhatsApp](#)



The Future of Hybrid Inverters in 5G Communication Base Stations

As 5G networks expand, hybrid inverters will play a pivotal role in powering next-gen base stations--providing stable, cost-effective, and green energy solutions that support ...

[WhatsApp](#)





Communication Base Station Innovation Trends , Huijue Group ...

As we deploy zero-energy base stations powered by ambient RF signals, shouldn't we address electromagnetic hypersensitivity concerns? The industry must balance technical prowess with ...

[WhatsApp](#)



Contact Us

For catalog requests, pricing, or partnerships, please visit:
<https://www.straighta.co.za>