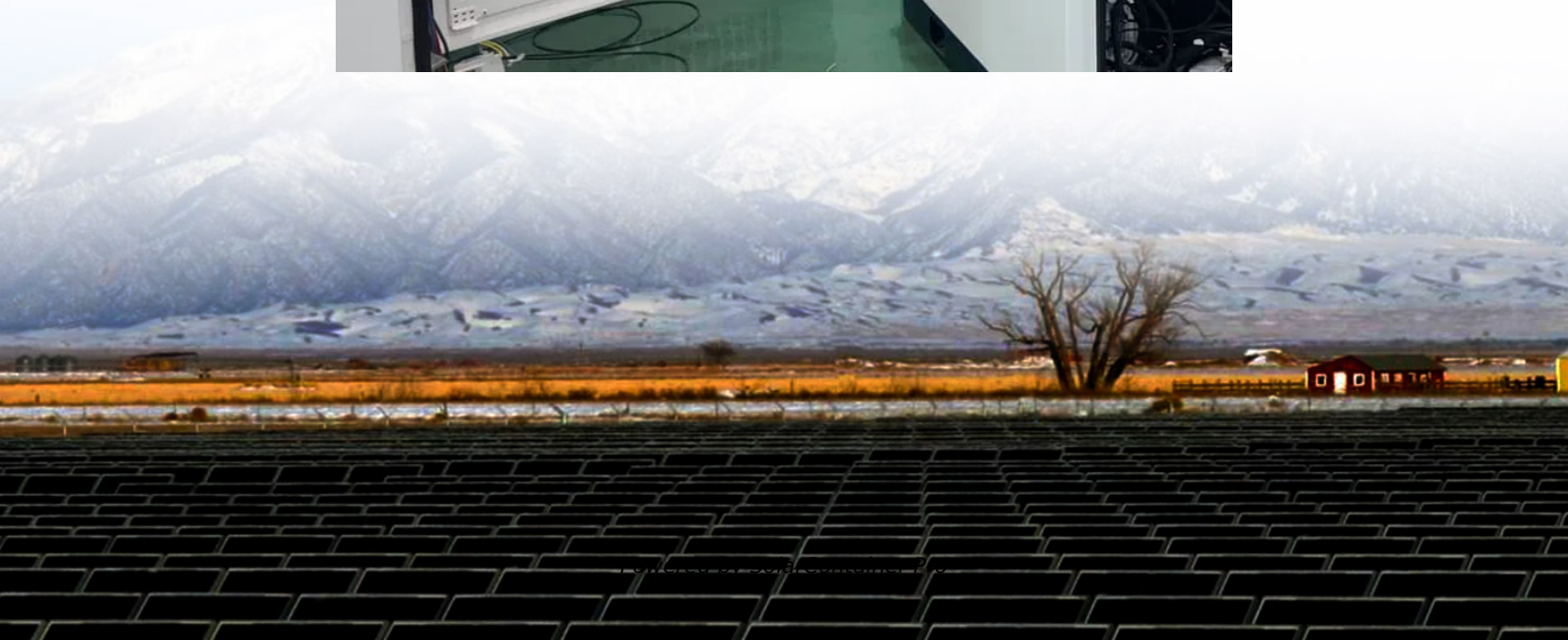


Composition structure of double-glass photovoltaic modules



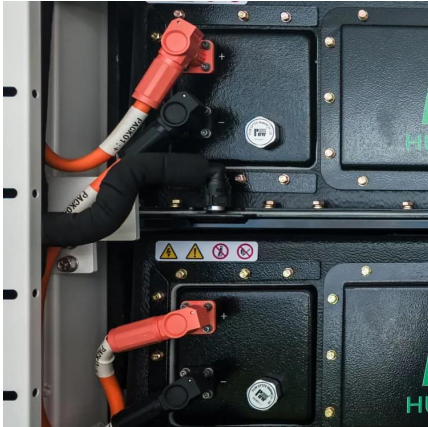


Overview

Traditional solar panels typically feature a glass front and a polymer backsheet. In contrast, double glass modules replace the polymer layer with another glass sheet, creating a robust sandwich structure.



Composition structure of double-glass photovoltaic modules



What is the difference between a double-sided double-glass n ...

The difference between double-sided double-glass n-type monocrystalline solar photovoltaic module and ordinary components is reflected in multiple dimensions, from core ...

[WhatsApp](#)

In-depth understanding of the composition of photovoltaic modules

In today's era of pursuing clean energy and sustainable development, photovoltaic modules, as the key equipment for converting solar energy into electricity, have attracted much attention for ...

[WhatsApp](#)



Physical Properties of Glass and the Requirements for ...

Glass structure modifications can improve durability Multi-component silicate glass Fully polymerized multi-component silicate with non-bridging oxygens glass without non ...

[WhatsApp](#)

[INSTRUCTIONS FOR PREPARATION OF PAPERS](#)

Technical problems such as manufacturing yield, extra weight and the lack of frame support were solved by selecting a double heat-strengthened glass structure with a thickness of 2.5mm (or ...



[WhatsApp](#)



Structure of double glass (a) and traditional module (b).

To systematically investigate the degradation behavior of double glass modules compared with traditional backsheet modules, we carried out an extensive program with series sequential

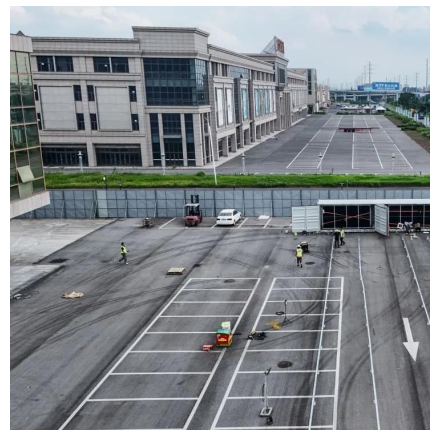
[WhatsApp](#)



The Recycling Value Battle: Double - Glass vs Single - Glass

The recycling value also depends on the market demand for the recycled materials. As the demand for sustainable and recycled resources in the photovoltaic industry ...

[WhatsApp](#)



High performance double-glass bifacial PV modules through ...

Significant amount of near infrared light passes through bifacial cells. Double-glass structure shows a loss of $\sim 1.30\%$ compare to the glass/backsheet structure under STC measurements.

[WhatsApp](#)





2025 Complete Guide to Glass-Glass Solar Panels: The Top ...

Glass-glass PV modules, also known as double glass solar panels, are photovoltaic modules encapsulated with tempered glass on both the front and back sides. Compared to traditional ...

[WhatsApp](#)



Quantifying the influence of encapsulant and backsheet composition ...

The focus is on the relationships between the aging of materials and material composites and the electrical module performance. 2.1 PV module composition In order to ...

[WhatsApp](#)

Contact Us

For catalog requests, pricing, or partnerships, please visit:
<https://www.straighta.co.za>