

Component single chip all black





Overview

An integrated circuit (IC), also known as a microchip or simply chip, is a compact assembly of formed from various — such as , , and — and their interconnections. These components are fabricated onto a thin, flat piece ("chip") of material, most commonly . Integrated circuits ar.

What is system on chip (SoC)?

What is SoC?

System on Chip (SoC) is an integrated circuit that consolidates all necessary electronic components into a single chip. This miniaturization is crucial for the development of compact and efficient devices, from smartphones to IoT gadgets. Also read: Importance of Functional Verification in VLSI Design.

What is a system on a chip?

The design of a system on chip usually includes a central processing unit, memory, ports for input and outputs, secondary storage devices, and peripheral interfaces such as I2C, SPI, UART, CAN, Timers, etc. Depending upon the requirement it can also consist of a digital or analog signal processing system or a floating-point unit. What is SoC?

.

What is a system-on-chip (SoC)?

As the name suggests, the SoC contains a unit for all the memory of the system. Both random-access and read-only memory is embedded in the integrated chip (IC) that we call a system-on-chip. All the peripheral or component interfaces are embedded in this chip. This interface is usually used for communication purposes with the outer world.

What are the benefits of integrating components into a single chip?

By integrating components onto a single chip, the distance between them is minimized, resulting in faster data transfer and reduced power consumption. This enables devices to perform tasks more efficiently, prolonging battery life



and enhancing user experience.

What is a chip on a PCB?

It is a "Chip on board". It is an ic wire bonded directly to the board, and then protected with some epoxi (the "black thing"). Like Leon said the techniques is called Chip-on-board (COB). You do exactly the same to bond the die directly to the PCB as you would to bond the pins in an IC package. Savings: no package needed.

What is system-on-chip technology?

System-on-Chip (SoC) technology has revolutionized various industries by integrating multiple components onto a single chip. From mobile devices to IoT applications, automotive systems to wearable devices, SoCs have become the backbone of modern technological advancements.



Component single chip all black



Integrated circuit

OverviewTerminologyHistoryDesignTypesManufacturingIntellectual propertyGenerations

An integrated circuit (IC), also known as a microchip or simply chip, is a compact assembly of electronic circuits formed from various electronic components -- such as transistors, resistors, and capacitors -- and their interconnections. These components are fabricated onto a thin, flat piece ("chip") of semiconductor material, most commonly silicon. Integrated circuits ar...

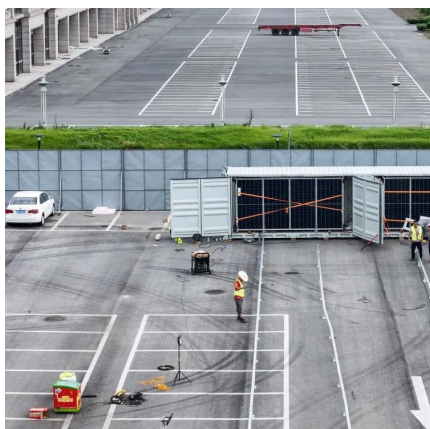
[WhatsApp](#)



System on Chip (SoC) Introduction

A System on Chip usually known as an SoC is basically a circuit embedded on a small coin-sized chip and integrated with a microcontroller or microprocessor. It is called a system on the chip ...

[WhatsApp](#)



System on Chip (SoC): Understanding the Integration of All Components

A System on Chip (SoC) integrates a multitude of components to deliver a comprehensive, self-sufficient processing unit on a single chip. Central to its operation is the ...

[WhatsApp](#)

[Motherboard Chips and Components -](#)



[ITfreetraining](#)

A chipset is the same idea. The chips need to be compatible with the other components on the motherboard. So, the chip will only work with certain CPUs and other components. Therefore, ...

[WhatsApp](#)



System on Chip: SoC: Integrating multiple components on a single chip

By integrating multiple components onto a single chip, the need for separate power supplies and interconnections between components is eliminated. This not only reduces the ...

[WhatsApp](#)



What is this black chip ? Is it like a microcontroller to this

It's a COB (chip-on-board). The die (the electronics inside a chip) is attached directly to the board and covered with a blob of epoxy. This is cheaper if you are making ...

[WhatsApp](#)



System on Chip (SoC): Understanding the Integration of All ...

A System on Chip (SoC) integrates a multitude of components to deliver a comprehensive, self-sufficient processing unit on a single chip. Central to its operation is the ...

[WhatsApp](#)

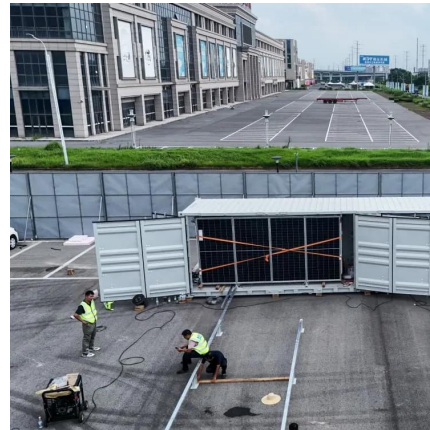




System on Chip: SoC: Integrating multiple components on a ...

By integrating multiple components onto a single chip, the need for separate power supplies and interconnections between components is eliminated. This not only reduces the ...

[WhatsApp](#)



Contact Us

For catalog requests, pricing, or partnerships, please visit:
<https://www.straighta.co.za>