

Communication power generation base station infrastructure





Overview

What is AI-powered base station?

1. AI-Powered Base Station Functionality Using AI, the system dynamically manages traffic congestion and optimizes frequency allocation, enabling higher upload/download speeds and improved quality. AI also monitors traffic to optimize base station power consumption, enhancing energy efficiency.

What is the role of communication infrastructure in modern power systems?

This research underscores the crucial role of efficient communication infrastructure in modern power systems and presents a comprehensive approach that can be used to plan and operate both communication and power systems, ultimately leading to more resilient, efficient, and reliable networks.

Can communication and power coordination planning improve communication quality of service?

Our study introduces a communications and power coordination planning (CPCP) model that encompasses both distributed energy resources and base stations to improve communication quality of service.

How does a base station work?

As shown in Figure S3 each user accesses a base station, and the BS then allocates a channel to each new user when there is remaining channel capacity. If all of the channel capacity of a BS is occupied, a user cannot access this BS and must instead access another BS that is farther away.

Why are power systems and communication systems increasingly coupled?

Therefore, power systems and communication systems are increasingly coupled. A power system supplies energy, and a communication system meets the demand for information exchange. A BS is the main intermediary between a communication network and a power network.



What is the access mechanism between EMCs and BSS?

To describe the access mechanism between the EMCs and the BSs, we introduce an $N_{bs} \times N_{mg}$ connection matrix A , where N_{mg} is the EMCs number and N_{bs} is the number of power towers which is also the number of candidate locations for base stations. It is not necessary for all power towers to be selected as communication power sharing towers.



Communication power generation base station infrastructure



Base Station Energy Storage Production: Powering the Next ...

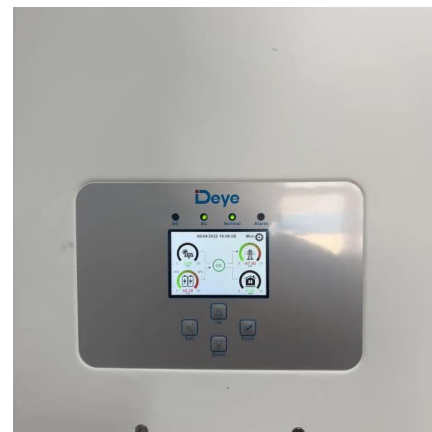
Have we reached the breaking point where conventional power solutions can't sustain our hyper-connected world? The answer lies in rethinking energy storage production specifically for ...

[WhatsApp](#)

5G and energy internet planning for power and communication ...

Summary Our research addresses the critical intersection of communication and power systems in the era of advanced information technologies. We highlight the strategic importance of ...

[WhatsApp](#)



Optimal configuration for photovoltaic storage system capacity in ...

The construction of a new power system is an important support for achieving emission peak and carbon neutrality, and the proportion of new energy will continue to ...

[WhatsApp](#)

Towards Integrated Energy-Communication-Transportation Hub: ...

By exploring the overlap between base station distribution and electric vehicle charging infrastructure, we demonstrate the feasibility of



efficiently charging EVs using base ...

[WhatsApp](#)



Low-Carbon Sustainable Development of 5G Base Stations in China

As 5G serves as the foundation for the construction of new infrastructure, China, as the world leader in 5G base station construction, has already built over 1.4 million 5G base ...

[WhatsApp](#)



Towards Integrated Energy-Communication-Transportation Hub: A Base

By exploring the overlap between base station distribution and electric vehicle charging infrastructure, we demonstrate the feasibility of efficiently charging EVs using base ...

[WhatsApp](#)



Base Station Energy Storage Production: Powering the Next Generation ...

Have we reached the breaking point where conventional power solutions can't sustain our hyper-connected world? The answer lies in rethinking energy storage production specifically for ...

[WhatsApp](#)





5G and energy internet planning for power and communication ...

Our research addresses the critical intersection of communication and power systems in the era of advanced information technologies. We highlight the strategic ...

[WhatsApp](#)



Optimal energy-saving operation strategy of 5G base station with

To further explore the energy-saving potential of 5 G base stations, this paper proposes an energy-saving operation model for 5 G base stations that incorporates communication caching ...

[WhatsApp](#)

Cellular Network Infrastructure: Key Components & Functions

Discover the essential components of cellular network infrastructure, from MSC and base stations to 5G networks. Learn how they ensure seamless mobile connectivity.

[WhatsApp](#)



[Communication Base Station Energy Solutions](#)

Due to harsh climate conditions and the absence of on-site personnel to maintain fuel generators, the company required a reliable solution to ensure the base station's stable operation and ...

[WhatsApp](#)



5G Network Equipment Manufacturers: Modem, Base Station, ...

5G Base Station A 5G base station is the critical infrastructure that provides wireless connectivity in 5G networks. It consists of antennas, transceivers, and digital processing units that transmit ...

[WhatsApp](#)



Site Energy Revolution: How Solar Energy Systems Reshape Communication

Let's explore how solar energy is reshaping the way we power our communication networks and how it can make these stations greener, smarter, and more self-sufficient.

[WhatsApp](#)



Kyocera Develops AI-Powered 5G Virtualized Base Station For ...

Kyocera is leveraging its proprietary, globally developed telecommunications and virtualization technologies to bring base station functionality to general-purpose servers using ...

[WhatsApp](#)





How Solar Energy Systems are Revolutionizing Communication Base Stations?

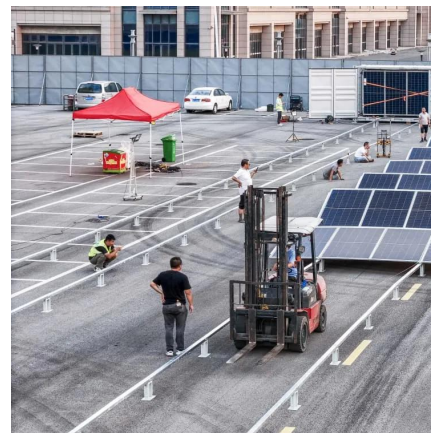
Why Solar Energy for Communication Base Stations? Being a clean and renewable energy source, solar energy emits much less greenhouse gas compared to the ...

[WhatsApp](#)

[Next-Generation Base Stations: Deployment, Disaster](#)

Capillaries of Mobile Communication: The Core Structure of Base Stations. Base Transceiver Stations (BTS) are the backbone of mobile communication systems. They enable ...

[WhatsApp](#)



Towards Integrated Energy-Communication-Transportation Hub: A Base

The rise of 5G communication has transformed the telecom industry for critical applications. With the widespread deployment of 5G base stations comes a signific.

[WhatsApp](#)

Contact Us

For catalog requests, pricing, or partnerships, please visit:
<https://www.straighta.co.za>