

Communication equipment base station type





Overview

In the area of wireless computer networking, a base station is a radio receiver/transmitter that serves as the hub of the local wireless network, and may also be the gateway between a wired network and the wireless network. It typically consists of a low-power transmitter and .

A cell site, cell tower, or cell base station is a cellular-capable mobile device site. It consists of electronic communication equipment and antennas. They are usually on a radio mast, tower, or any other elevated structure. A cell in a cellular network is created through the cell tower or cell site.



Communication equipment base station type



Base station

OverviewComputer networkingLand surveyingWireless communicationsSee also

In the area of wireless computer networking, a base station is a radio receiver/transmitter that serves as the hub of the local wireless network, and may also be the gateway between a wired network and the wireless network. It typically consists of a low-power transmitter and wireless router.

[WhatsApp](#)

Types and Applications of Mobile Communication Base Stations

In terms of form, future base stations will develop in three directions: macro base stations with higher performance and integration, micro base stations with smaller size, and ...

[WhatsApp](#)



Base station types: a solution for every deployment scenario

There are different types of base stations, offering a wide variety of operating characteristics under different conditions, with a suitable solution for each type of scenario, but ...

[WhatsApp](#)

[3 Types of Two-Way Radios for All Industries](#)

3. Desktop Base Station Radios A desktop base



station radio rests on top of a desk and plugs into the wall for power. These types of two-way radios are extremely reliable but also larger and ...

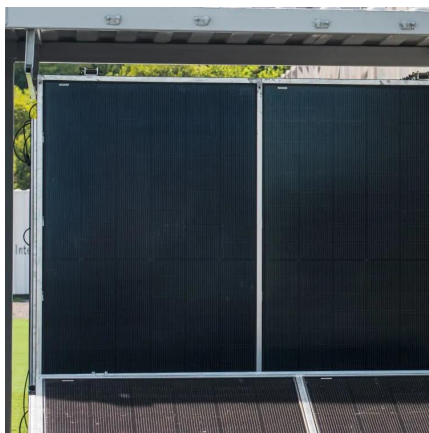
[WhatsApp](#)



Unraveling the Mysteries of Cell Towers and Base Stations

It consists of electronic communication equipment and antennas. They are usually on a radio mast, tower, or any other elevated structure. A cell in a cellular network is created through the ...

[WhatsApp](#)



5G Technology Metrics Explained: Base Station, Uplink, and User

Explore in-depth technology metrics for 5G systems, comparing key specifications across base stations, uplink CPEs, and user devices to understand network design and ...

[WhatsApp](#)



DBS5900 Distributed Base Stations

The distributed architecture is adopted to separate the RF unit part of the base station from the baseband unit part, connecting the two parts through optical fiber, which minimizes the feeder ...

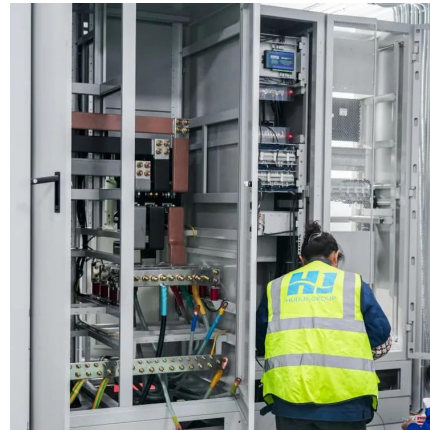
[WhatsApp](#)



Guide to Base Station Communications Equipment , Office of ...

The first section discusses the frequency bands available to law enforcement agencies and factors that affect coverage in communications between base and mobile stations. Advantages ...

[WhatsApp](#)



The Base Station in Wireless Communications: The Key to ...

Equipped with an electromagnetic wave antenna, often placed on a tall mast, the base station enables communication between mobile terminals (such as mobile phones or ...

[WhatsApp](#)



Base Stations and Cell Towers: The Pillars of Mobile Connectivity

Base stations and cell towers are critical components of cellular communication systems, serving as the infrastructure that supports seamless mobile connectivity. These ...

[WhatsApp](#)



Contact Us

For catalog requests, pricing, or partnerships, please visit:
<https://www.straightta.co.za>