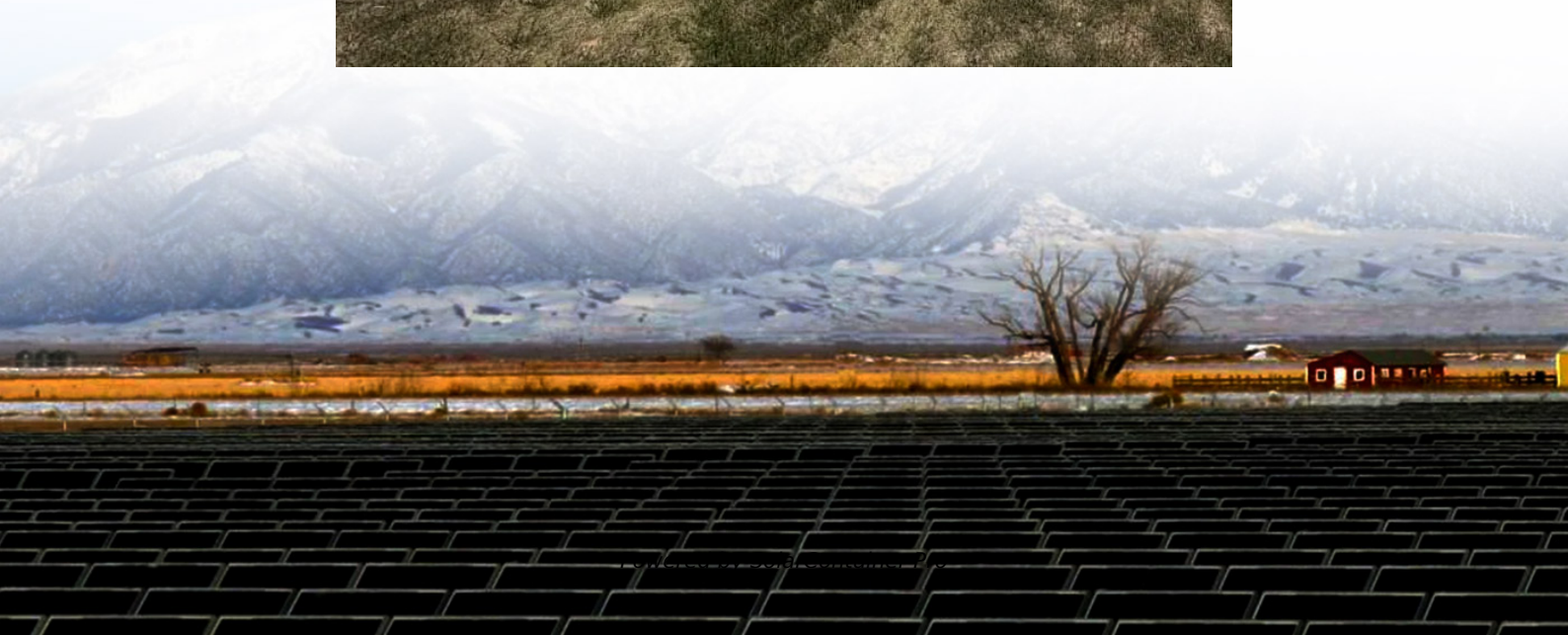


Communication equipment base station includes





Overview

In the area of wireless computer networking, a base station is a radio receiver/transmitter that serves as the hub of the local wireless network, and may also be the gateway between a wired network and the wireless network. It typically consists of a low-power transmitter and .

The hardware components of a base station include antennas, radios, and processing units, while the software components include network management software and control software. Antennas are a key component of a base station, providing the interface between the wireless device and the base station.



Communication equipment base station includes



The Base Station in Wireless Communications: The Key to ...

Equipped with an electromagnetic wave antenna, often placed on a tall mast, the base station enables communication between mobile terminals (such as mobile phones or ...

[WhatsApp](#)

Types of radio communication equipment , AEROTHAI Business

The Air-to Ground radio system consists of the following components: 1. The Air-to-ground Base Station (A/G base station) is used for air-to-ground communications within a radius of 200 ...

[WhatsApp](#)



[Wireless Facility Siting: Section 6409\(a\) Checklist](#)

Section 6409(a) of the Middle Class Tax Relief and Job Creation Act of 2012 mandates that a State or local government approve certain wireless broadband facilities siting requests for ...

[WhatsApp](#)

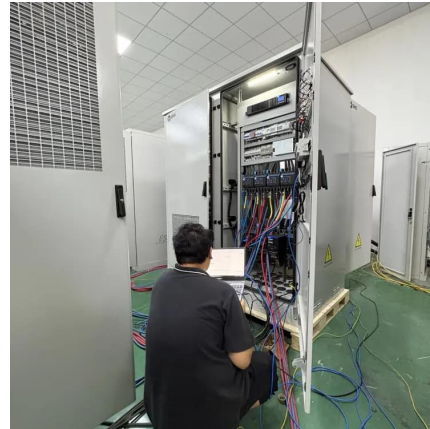
[Communication Method, Base Station, and User Equipment](#)

Embodiments of the present invention provide a communication method, a base station, and a user equipment. The communication method



includes: sending a PDCCH to a user equipment
...

[WhatsApp](#)



[What is Telecommunication Base Station , China Hop](#)

Generally speaking, a base station consists of three antennas, each transmitting signals in a 120 degree direction towards the surrounding area, which together provide seamless coverage of ...

[WhatsApp](#)



Base Stations and Cell Towers: The Pillars of Mobile Connectivity

It consists of electronic equipment, including transceivers, antennas, and signal processors, that manage the communication within a specific geographical area or "cell."

[WhatsApp](#)



Base station

OverviewComputer networkingLand surveyingWireless communicationsSee also

In the area of wireless computer networking, a base station is a radio receiver/transmitter that serves as the hub of the local wireless network, and may also be the gateway between a wired network and the wireless network. It typically consists of a low-power transmitter and wireless router.



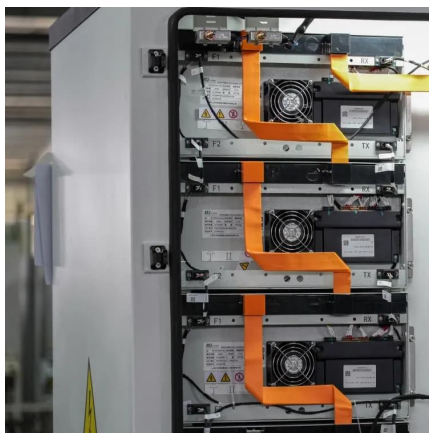


[WhatsApp](#)

[Communication Method, Base Station, and Terminal Device](#)

The embodiment of the invention provides a communication method, a base station and a terminal device. The communication method comprises the steps that the base station sends ...

[WhatsApp](#)



[What is a Base Station in Telecommunications?](#)

Discover the role and functionality of a base station in telecommunications networks. Learn how these critical components manage communication between mobile devices and the network, ...

[WhatsApp](#)

[Do You Need A Base Station For Two-Way Radio System?](#)

A base station, also known as a repeater, is a device used for communicating with or without hand-held radios, but most often with. A base station produces a much greater ...

[WhatsApp](#)



Contact Us

For catalog requests, pricing, or partnerships, please visit:
<https://www.straighta.co.za>