

Communication base station inverter grid connection approval document





Overview

How do I configure an inverter?

The configuration is transferred to all inverters in the system. The system password assigned via the communication device is also the password for the user interface of the inverter. Commission the inverter (> Commissioning the Inverter). The initial configuration of the inverter is made via the communication device.

Who manages underlying inverters?

It is the responsibility of the aggregator system to manage the underlying inverters to meet the requirements of the settings provided by the utility server. The specific interpretation of the DER being a single entity or a related group is established at the time of interconnection with the utility.

Do smart inverters need communication?

All smart inverters require communications to achieve their full value as distributed energy resources. Establish a complete profile – To achieve complete interoperability a complete profile is required including a data model, messaging model, communication protocol and security.

Does IEEE 2800 apply to inverter-based resources?

and not to an isolated inverter-based resource (IBR) on its own. IEEE 2800 applies to all IBRs (including grid-forming ones), but was designed with conventional grid-following IBRs. Fig. 2 illustrates the specific requirements that are within and outside of.

Are pre-approved single line diagrams available?

Pre-Approved Single Line Diagrams for projects selecting Protection Options 3 or 6 are now available for use. You may download these documents and attach them to your Interconnection Request submittal.



Are interconnection and interoperability technical standards effective?

In closing, 1547 and 2030 interconnection and interoperability technical standards continue to evolve as foundational documents helping accelerate the realization of the future grid. However, technical standards alone are not immediately effective unto themselves.



Communication base station inverter grid connection approval docu



Hybrid Power Supply System for Telecommunication Base Station

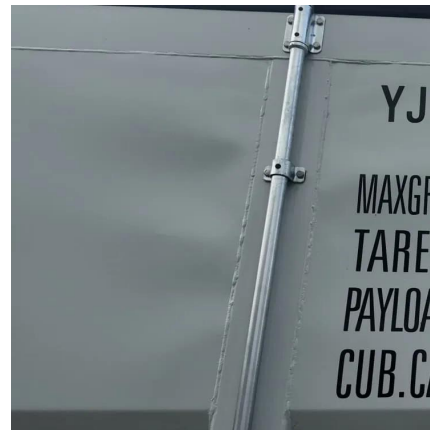
This research paper presents the results of the implementation of solar hybrid power supply system at telecommunication base tower to reduce the fuel consumption at rural area. An ...

[WhatsApp](#)

[Duke Energy IBR Interconnection Requirements](#)

The purpose of this document is to establish the technical interconnection requirements (TIR), which includes capability and performance requirements, for all inverter-based resource (IBR) ...

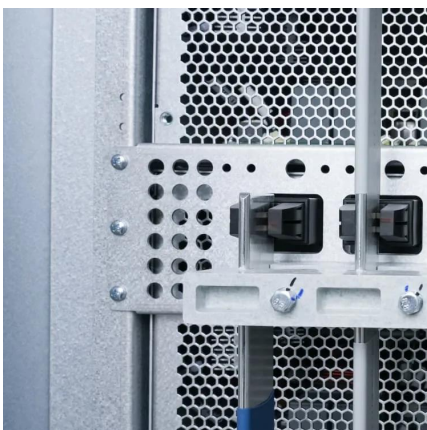
[WhatsApp](#)



[Connection Study Requirements for New Generating Assets](#)

The purpose of this document is to assist you, the asset owner, to understand the requirements for completing connection studies when connecting a generation asset to the New Zealand ...

[WhatsApp](#)



An Overview of Inverter-based Resource Interconnection ...

rds Committee for approval to move forward to the IEEE SA Ballot. Upon successful completion of the IEEE SA Ballot process, the draft standard is



submitted to the Review Committee ...

[WhatsApp](#)



[Customer Interconnection Guide 3 Phase](#)

The Approval to Install is a preliminary approval and is for operational purposes only. It is the Customer's responsibility to ensure compliance with any requirements documented in the ...

[WhatsApp](#)



[TECHNICAL SPECIFICATION SECTION-GENERAL ...](#)

All engineering data submitted by the Contractor after final process including review and approval by the Employer shall form part of the Contract Document and the entire works performed ...

[WhatsApp](#)



[Interconnecting Generation Under Rule 21](#)

Pursuant to the CPUC Energy Division's acceptance of SCE Advice Letter 4824-E/E-A/E-B/E-C, effective August 29, 2023, Rule 21 applicants are required to use inverters that comply with UL ...

[WhatsApp](#)





[IEEE 1547 and 2030 Standards for Distributed Energy ...](#)

Technology manufacturers, utilities, and AHJs look to--and most often require--1547 as the base standard for interconnection requirements, certification, and listing of equipment ...

[WhatsApp](#)



Advisory Guide. Decentralized Inverter Technology in Large

A non walk-in compact station offers the connection possibility for string inverters (SMC and Tri-power) to the medium-voltage grid. The station is divided into three areas: low-voltage, ...

[WhatsApp](#)



[Community Energy Resource Toolkit Grid Connection](#)

The distribution network has traditionally taken the power produced by the large fossil fuelled power stations connected to the transmission system and delivered the power to demand ...

[WhatsApp](#)



[Duke Energy IBR Interconnection Requirements](#)

1.0 Purpose The purpose of this document is to establish the technical interconnection requirements (TIR), which includes capability and performance requirements, for all inverter ...

[WhatsApp](#)



[Compliance Process , National Energy System Operator](#)

This page summarises the Operational Notification and Compliance Process (ONCP) facilitated by NESO in respect of new generation connections. The ONCP embraces the requirements of ...

[WhatsApp](#)



[SAGC Requirements for Renewable Power Plants Rev 2 8](#)

Objectives The primary objective of this grid connection code is to specify minimum technical and design grid connection requirements for Renewable Power Plants (RPPs) connected to or ...

[WhatsApp](#)



[Generator Connection Process Guideline](#)

Introduction This guideline is designed to improve clarity and transparency of the connection process and allow connection applicants to participate more effectively in this process. It ...

[WhatsApp](#)





Contact Us

For catalog requests, pricing, or partnerships, please visit:
<https://www.straighta.co.za>