

# **Communication base station inverter grid-connected fan main direction**





## Overview

---

What are the characteristics of different communication methods of inverters?

The characteristics of different communication methods of inverters are obvious, and the application scenarios are different. In order to better weave the underlying network of energy digitization and intelligent development, choose the most appropriate communication method according to local conditions.

What is the correct installation direction?

The correct installation direction refers to that “-->” in CT is the direction of inverter current pointing to the grid. The inverter will be triggered with an alarm if CT is installed reversely. It is unable to realize the power limit function.

How can the grid converter control be oriented to different network nodes?

The Grid Converter control can be oriented to different network nodes by using the Mains Voltage Measurement OC7V0 option board. For example, the voltage can be measured upstream of the line filter or the main transformer. The measurement point is configured in the application with a parameter.

What are the functions of a power station inverter?

Commonly used functions are as follows: Management of organization or user information. Addition and monitoring of power station information. Equipment maintenance. Power off the inverter before operations and maintenance. Otherwise, the inverter may be.

What is a grid-following inverter?

Grid-Following Inverters (GFLI) and Grid-Forming Inverters (GFMI) are two basic categories of grid-connected inverters. Essentially, a grid-following inverter works as a current source that synchronizes its output with the grid voltage and frequency and injects or absorbs active or reactive power by



controlling its output current.

How do I connect a solar inverter to a utility grid?

Step 1 Turn on the AC switch between the inverter and the utility grid. Step 2 Turn on the DC switch between the inverter and the PV modules. Step 3 Turn on the DC switch of the inverter. Inverter firmware version shown in this document is V1.00.00. Communication version: V1.00. The screenshots are for reference only.



## Communication base station inverter grid-connected fan main direc

---



### [PV Grid-Connected Inverter User Manual](#)

This document describes the mounting, installation, commissioning, configuration, operation, troubleshooting and decommissioning of the product as well as the operation of the product ...

[WhatsApp](#)

### Communication Protocol of PV Grid-Connected String Inverters

on Time V1.0 V1.0 released 2022-12-07 1.  
Introduction This communication adopts Modbus-RTU protocol, and applies to the communication between EVVO PV grid-connected string inverters ...

[WhatsApp](#)



### Research on converter control strategy in energy storage ...

The distributed energy storage composed of backup battery energy storage in communications base stations can participate in auxiliary market services and power demand-side response, ...

[WhatsApp](#)



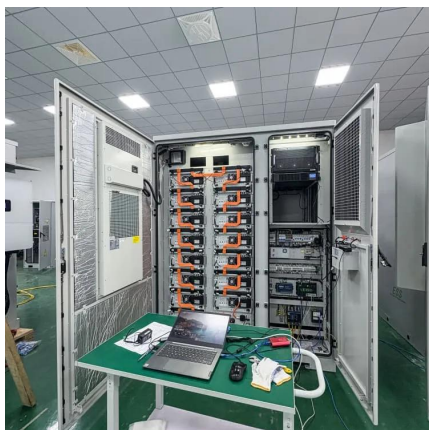
### Synchronization of Three Phase Inverter with Electrical Grid

Parameters of the inverter such as voltage, frequency and phase can be controlled for the purpose of synchronization with the relevant



parameters of the grid system. Synchronization of ...

[WhatsApp](#)



### [Inverter communication mode and application scenario](#)

Serial inverters and energy storage inverters can be equipped with a data collector with a LAN port. The LAN port collector is connected to network devices such as routers through network ...

[WhatsApp](#)

### [Synchronization of the solar inverter with the grid](#)

Grid synchronization is the process by which a solar inverter ensures that the electricity it generates is perfectly aligned with the grid it is connected to. This is very important ...

[WhatsApp](#)



### **Grid-Connected Inverter Installation and Operation Manual**

The default password is "0000". Please press "ENTER" to move the cursor backwards or confirm the setting, press "up" / "DOWN" to select the number, press "ESC" to move the cursor forward ...

[WhatsApp](#)



## Contact Us

---

For catalog requests, pricing, or partnerships, please visit:  
<https://www.straighta.co.za>