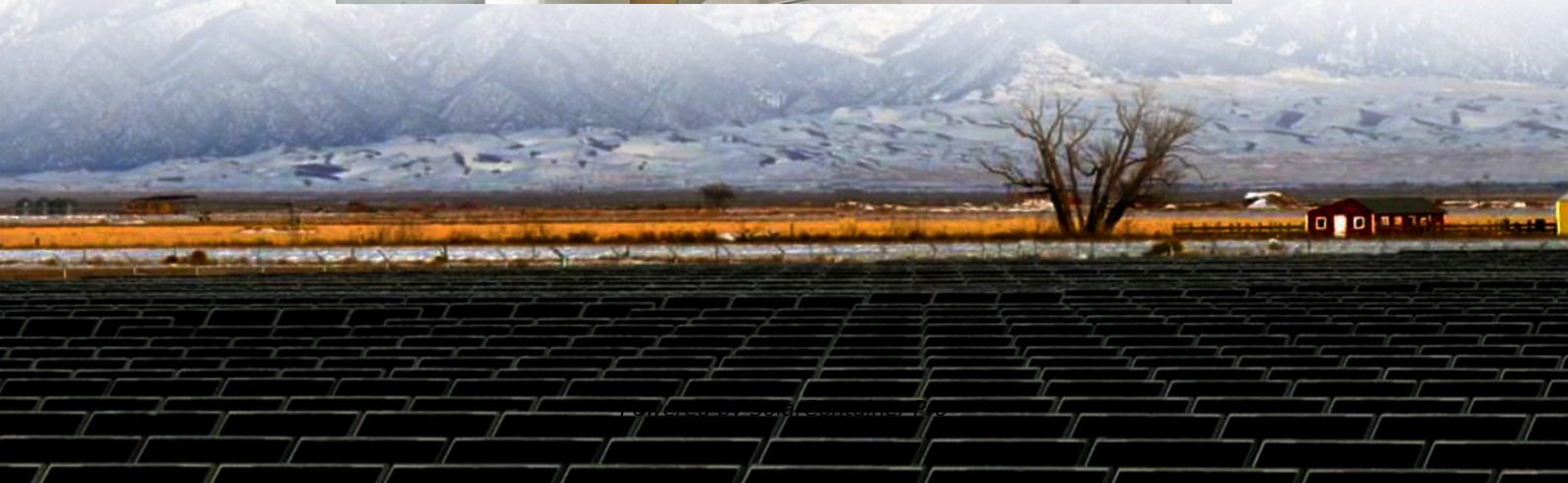


# **Communication base station inverter grid-connected company meaning**





## Communication base station inverter grid-connected company mean

---



### Communication base station grid-connected solar power ...

On the other hand, considering the energy use, the concept of a green base station system is proposed, which uses renewable energy or hybrid power to provide energy for the base station ...

[WhatsApp](#)

### Grid-Connected Inverter System

A grid-connected inverter system is defined as a system that connects photovoltaic (PV) modules directly to the electrical grid without galvanic isolation, allowing for the transfer of electricity ...

[WhatsApp](#)



### The Future of Hybrid Inverters in 5G Communication Base Stations

Hybrid inverters allow intelligent switching and load optimization, enabling the system to prioritize solar during the day and batteries at night, while drawing from the grid only ...

[WhatsApp](#)

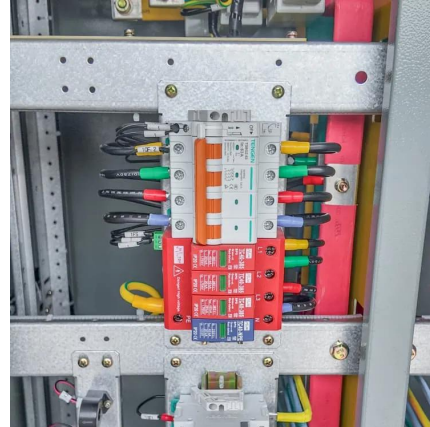
### [Communication Base Station Inverter Application](#)

Multi-source energy integration: In some base stations, inverters can integrate multiple energy sources (such as power grid, solar energy, wind



energy) to ensure the stability ...

[WhatsApp](#)



### [Communication Base Station Energy Solutions](#)

Due to harsh climate conditions and the absence of on-site personnel to maintain fuel generators, the company required a reliable solution to ensure the base station's stable operation and ...

[WhatsApp](#)



### **High Efficiency Grid Connected Inverters: Advanced Solar Power**

A grid connected inverter serves as a crucial component in modern renewable energy systems, particularly in solar power installations. This sophisticated device converts direct current (DC) ...

[WhatsApp](#)



### **Inverter types and classification , AE 868: Commercial Solar ...**

Types of Grid-connected Inverters Aside from the modes of operation, grid-connected inverters are also classified according to configuration topology. There are four different categories ...

[WhatsApp](#)







## The Role of Hybrid Energy Systems in Powering Telecom Base Stations

Powering telecom base stations has long been a critical challenge, especially in remote areas or regions with unreliable grid connections. Telecom operators need continuous, ...

[WhatsApp](#)



### [Detailed explanation of inverter communication method](#)

Power line communications (PLC for short) technology refers to a communication method that uses power cables to transmit data and media signals. The data is transmitted over power ...

[WhatsApp](#)

## Communication Base Station Smart Hybrid PV Power Supply ...

The Telecom Base Station Intelligent Grid-PV Hybrid Power Supply System helps telecom operators to achieve "carbon reduction, energy saving" for telecom base stations and machine ...

[WhatsApp](#)



## Contact Us

For catalog requests, pricing, or partnerships, please visit:  
<https://www.straightta.co.za>