

# **Communication base station installation requirements and standards**





## Overview

---

What is design and installation codes & standards?

1. Design and Installation Codes and Standards in is the practical safeguarding of persons and property from Standards Engineering requirements requirements processes, standard of construction.

Do standards and guidelines apply to new communication sites?

The standards and guidelines in this manual apply to new communication sites built after the publication date of this revision. They are not required for sites built prior to publication of this revision.

What is a BS type 1 Nr base station?

BS type 1-C: NR base station operating at FR1 with requirements set consisting only of conducted requirements defined at individual antenna connectors. BS type 1-H: NR base station operating at FR1 with a requirement set consisting of conducted requirements defined at individual TAB connectors and OTA requirements defined at RIB.

What are the components of a base station?

Power Supply: The power source provides the electrical energy to base station elements. It often features auxiliary power supply mechanisms that guarantee operation in case of lost or interrupted electricity, during blackouts. Baseband Processor: The baseband processor is responsible for the processing of the digital signals.

Why do we need a base station?

Technological advancements: The New technologies result in evolved base stations that support upgrades and enhancements such as 4G, 5G and beyond, its providing faster speeds with better bandwidth. Emergency services: They provide access to emergency services, so that in case of emergency, people can call through their mobile phones.



What is a base station?

What is Base Station?

A base station represents an access point for a wireless device to communicate within its coverage area. It usually connects the device to other networks or devices through a dedicated high bandwidth wire of fiber optic connection. Base stations typically have a transceiver, capable of sending and receiving wireless signals;



## Communication base station installation requirements and standards

---



### [STANDARDS AND GUIDELINES FOR COMMUNICATION ...](#)

This manual provides Motorola's guidelines and requirements for the installation of communications equipment, infrastructure, and facilities. This edition of the manual has been ...

[WhatsApp](#)

### **Template BR\_Rec\_2005.dot**

A traditional mobile communication base station using a passive antenna, an antenna and feeder subsystem consists of an indoor jumper (1/2"), a main coaxial cable (7/8"), a top tower jumper ...

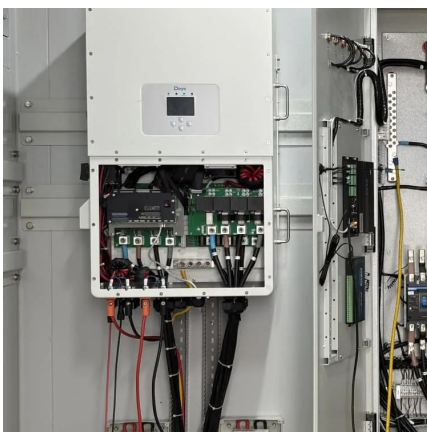
[WhatsApp](#)



### [Telecommunications Design and Installation Standards](#)

Telecommunications: The transmission of words, sounds, images, or data in the form of electronic or electromagnetic signals or impulses. The intent Telecommunications document accepted ...

[WhatsApp](#)



### [Telecom Base Station , Outdoor Electronics Vents](#)

The mobile communication base station system is mainly composed of base station controller, transceiver, base station antennas, RF devices,



base station power, transmission lines, anti ...

[WhatsApp](#)



### **ICTRFN4177A Install radio communications base station ...**

Application of the unit Field officers from private or public organisations apply the skills and knowledge in this unit. They combine technical radio communications skills with organisational ...

[WhatsApp](#)



### **ElectroMagnetic Compatibility (EMC) standard for radio ...**

ElectroMagnetic Compatibility (EMC) standard for radio equipment and services; Part 50: Specific conditions for Cellular Communication Base Station (BS), repeater and ancillary equipment; ...

[WhatsApp](#)



### **[Telecommunications Standards Advisory ommittee \(TSA\) ...](#)**

Acknowledgement The Info-communications Media Development Authority (IMDA) and the Telecommunications Standards Advisory Committee (TSAC) would like to acknowledge the ...

[WhatsApp](#)



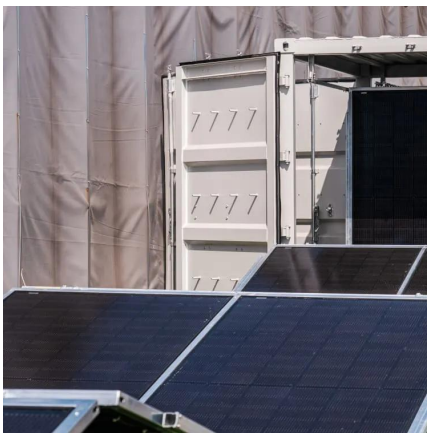




### [Construction of Cell Site , SIX Construction](#)

Building a cell site tower requires careful planning, precise engineering, and rigorous construction. Here's a comprehensive guide on the methods to build a cell site tower: I. Planning and ...

[WhatsApp](#)



### [UNSW Communications Services Design & Installation ...](#)

Floor plans showing the proposed location of each wireless base station outlet/base station taking into account the wall, wall mounted fixtures, ceiling types, ceiling height and future accessibility ...

[WhatsApp](#)

### [Telecommunications Design and Installation Standards](#)

Design and Installation Codes and Standards in is the practical safeguarding of persons and property from Standards Engineering requirements requirements processes, standard of ...

[WhatsApp](#)



### **VA 27 05 11 Requirements For Communications Installations**

Included throughout this specification are references to system's interface capability and various related features. System designer must verify availability of this system and coordinate ...

[WhatsApp](#)



### [Base Station Antenna: A Comprehensive Guide](#)

Base station antennas play a critical role in modern telecommunications. They are essential components of wireless communication networks, enabling the transmission and reception of ...

[WhatsApp](#)



## Contact Us

---

For catalog requests, pricing, or partnerships, please visit:  
<https://www.straighta.co.za>