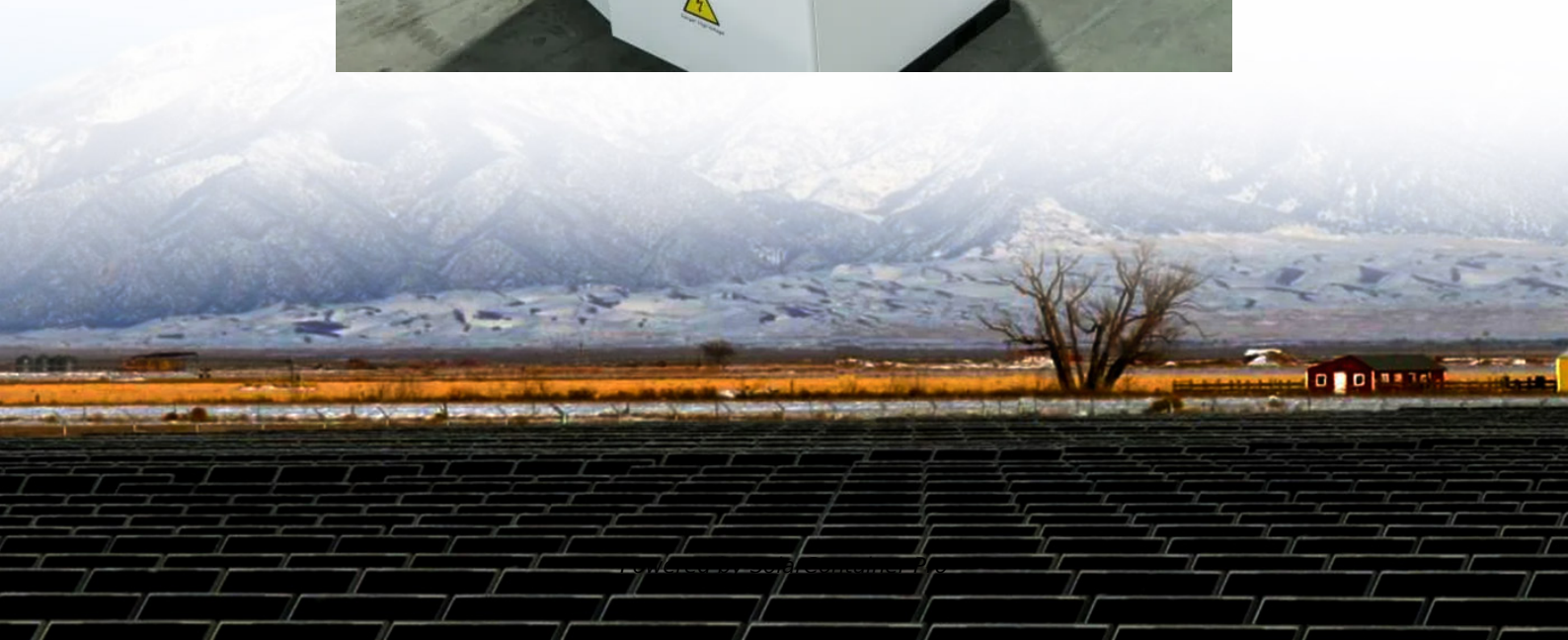


Communication 48V base station power supply





Overview

Why is a -48 V DC a positive ground system?

The short story is that -48 V DC, also known as a positive-ground system, was selected because it provides enough power to support a telecom signal but is safer for the human body while doing telecom activities.

What is a -48V back-up battery converter?

The -48V back-up battery converter is similar in construction and complexity to the single-output, high-power VoIP converter previously discussed. The power factor corrected (PFC) AC/DC produces the supply voltage for the 3G Base station's RF Power amplifier (typ. +27V) and the bus voltage for point-of-load converters.

What makes a telecom battery pack compatible with a base station?

Compatibility and Installation Voltage Compatibility: 48V is the standard voltage for telecom base stations, so the battery pack's output voltage must align with base station equipment requirements. Modular Design: A modular structure simplifies installation, maintenance, and scalability.

Can a -48 volt DC power a PA?

However, the -48 V DC must first be efficiently converted to a positive intermediate bus voltage before it can be boosted to power the PA or stepped down to a positive workable supply for the digital baseband units (BBU). A power supply with a capacity of 100 W to 350 W was sufficient to cover many applications.

What is a scalable -48 V DC PoL solution?

This article presents a scalable and stackable -48 V DC PoL solution that will address the high density power usage situations created by these high density networks from the tremendous growth in network traffic. Telecom and wireless network systems typically operate on -48 V DC power.



What is a -48V to multiple output converter?

In a DSL application, a -48V to multiple output converter may be used which incorporates a more complex, lower power transformer (50-100W) with several outputs.



Communication 48V base station power supply



What is Communication: Meaning, Types, Importance and Barriers

Communication is the process of exchange of information, ideas, thoughts, or feelings among individuals or groups. It involves sending and receiving messages through different means, ...

[WhatsApp](#)

Huawei Embedded ETP48100-B1 Communication Base Station 48V ...

It is equipped with two R4850G rectifiers with a current of 50 A (100 A total). The output voltage is 48 V. The PSU has an AC input (220 V), it is not equipped with a battery port. The device has ...

[WhatsApp](#)



[Communication Base Station Power Supply](#)

This product has communication capabilities and can achieve multi - group parallel connection, offering flexible and effective solutions for the power supply systems of communication operators.

[WhatsApp](#)



What is Communication Base Station 48V Power Supply System, ...

Videos about What is Communication Base Station 48V Power Supply System, Data Center 48V Power Supply System, Power



Communication Power Supply System., 3 Fuse Automation ...

[WhatsApp](#)



What is Communication Base Station 48V Power Supply System Power

What is Communication Base Station 48V Power Supply System Power Communication Power Supply System. 48V Power System, 3 Fuse Automation Molding manufacturers & suppliers on ...

[WhatsApp](#)



[Building a Better -48 VDC Power Supply for 5G and Next](#)

Telecom and wireless networks typically operate on -48 V DC power, but why? The short story is that -48 V DC, also known as a positive-ground system, was selected because it provides ...

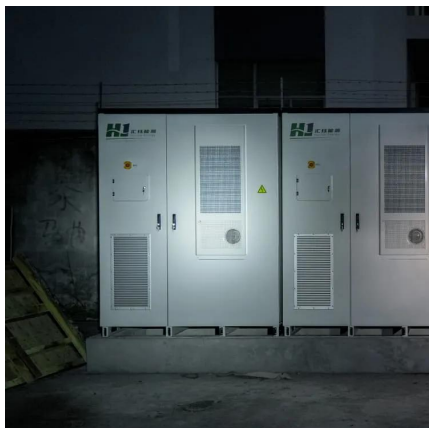
[WhatsApp](#)



Why does most of the communication power supply use -48V power supply?

In communication, we often find that most of the communication power supplies are powered by -48V. In fact, there are many reasons and considerations for such a standard. ...

[WhatsApp](#)

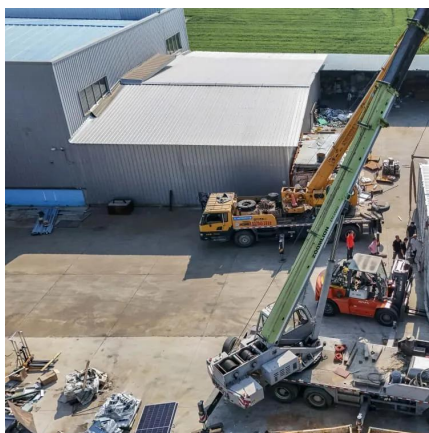




Towards Efficient, Reliable, and Cost-Effective Power Supply ...

The increasing use of outdoor installations is especially valid for new active antenna systems (AAS) base transceiver stations (BTS). This allows removing the cabinet at the ...

[WhatsApp](#)



[The 4 Types Of Communication \[Definitions & Examples\]](#)

Four fundamental types of communication: Verbal, Non-Verbal, Written, and Visual. Verbal communication is the exchange of spoken words and is essential for everyday life. Non ...

[WhatsApp](#)

What is Communication Base Station 110V Power Supply ...

Videos about What is Communication Base Station 110V Power Supply System, Data Center 48V Power Supply System, Power Communication Power Supply System., 3 Fuse Automation ...

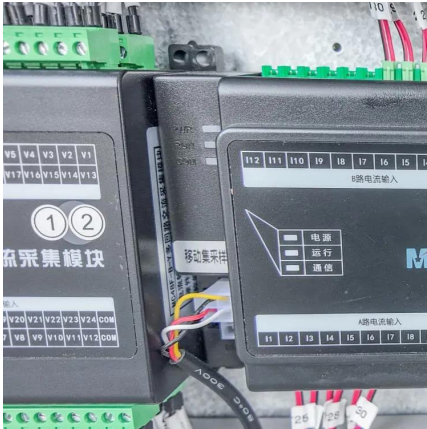
[WhatsApp](#)



Why is the power supply voltage of the communication base station -48V

The use of -48V power supply in communication base stations is largely due to historical reasons. Historically, equipment in the communication industry has always used ...

[WhatsApp](#)



What Is Communication? , Oral Communication

The communication process involves understanding, sharing, and meaning, and it consists of eight essential elements: source, message, channel, receiver, feedback, environment, context, ...

[WhatsApp](#)



5G Base Station 48V Rectifier Outdoor Power Supply

The Soetek Switch Mode Power Supply is a highly integrated outdoor 5G micro base station power supply system, it combines AC input power distribution, lightning protection, switching ...

[WhatsApp](#)

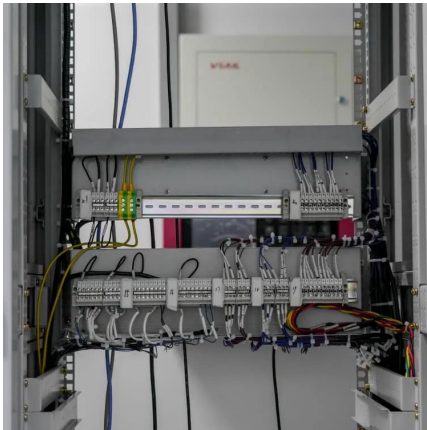


48V 150A Communication Base Station Wall Mounted Power Supply ...

48v 150a Communication Base Station Wall Mounted Power Supply Meets The Three Phase Single Phase Incoming Power Requirements, Find Complete Details about 48v 150a ...

[WhatsApp](#)





New Product Hw R4850n1 Communication Base Station Power Supply ...

New Product Hw R4850n1 Communication Base Station Power Supply Unit R4850n 48V, Find Details and Price about Rectifier Module Telecom Power Supply from New Product Hw ...

[WhatsApp](#)

Why does the communication base station use -48V power supply?

The voltage of +48V and -48V is equal, but the current flow is not the same. +48V flow to 0V, 0V flow to -48V. So -48V voltage is the communication power supply standards of ...

[WhatsApp](#)



SmartLi 48V DC DC Backup Battery Power for Telecom Base Station

This product is suitable for lithium iron phosphate battery communication backup power supply, which can provide overcharge, overdischarge, overcurrent, overtemperature, ...

[WhatsApp](#)

What Is Effective Communication? Skills for Work, School, and Life

Communication occurs in both verbal and non-verbal forms, such as written, visual, and listening. It can occur in person, on the internet (on forums, social media, and websites), ...

[WhatsApp](#)



Why choose SVC 48V Lithium iron battery for Telecom base station?

A telecom base station is an interface device for mobile devices to access the Internet . The construction of mobile communication base stations is an important part of ...

[WhatsApp](#)



[CTECHI 5G Telecom Base Station Battery 48V 50Ah Power](#)

CTECHI 5G Telecom Base Station Battery 48V 50Ah Power System Solution UPS Backup Battery
The CTECHI 50Ah 48V LiFePO4 Battery is a high-performance backup power solution ...

[WhatsApp](#)



[Communication: Definition, Meaning, and Examples](#)

The term "communication" refers to the process of exchanging information, ideas, and emotions between individuals or groups through various means, such as verbal, non ...

[WhatsApp](#)



Contact Us

For catalog requests, pricing, or partnerships, please visit:
<https://www.straighta.co.za>