

# **Cape Verde BESS outdoor base station power supply price inquiry**





## Overview

---

Do Bess products need an external power supply?

Most BESS products on the market require an external power supply circuit for their auxiliary loads, although some have built-in circuits and do not need an external supply.

How much does a Bess battery cost?

Factoring in these costs from the beginning ensures there are no unexpected expenses when the battery reaches the end of its useful life. To better understand BESS costs, it's useful to look at the cost per kilowatt-hour (kWh) stored. As of recent data, the average cost of a BESS is approximately \$400-\$600 per kWh. Here's a simple breakdown:.

What auxiliary loads are needed for a Bess project?

Fire safety systems, such as fire alarms, control panels and gas ventilation systems (if present). These auxiliary loads are essential for ensuring the safe and efficient operation of BESS projects. Therefore, providing a reliable power supply for these auxiliary loads is crucial.

How much does Bess cost?

The cost of BESS has fallen significantly over the past decade, with more precipitous drops in recent years: This is nearly a 70% reduction in three years, owing to falling battery pack prices (now as low as \$60-70/kWh in China), increased deployment, and improved efficiency.

Do I need backup power for a Bess auxiliary load?

For certain projects, backup power must be provided for the BESS auxiliary load as required by the BESS supplier or fire codes. Some BESS suppliers mandate uninterrupted power to maintain the operation of thermal management systems, ensuring battery temperatures remain within desired limits to minimize degradation.



Does Bess require uninterrupted power?

Some BESS suppliers mandate uninterrupted power to maintain the operation of thermal management systems, ensuring battery temperatures remain within desired limits to minimize degradation. BESS fire safety standards, such as NFPA 855, outline minimum requirements for backup power for fire safety systems.



## Cape Verde BESS outdoor base station power supply price inquiry

---



### BESS (Battery Energy Storage Systems)

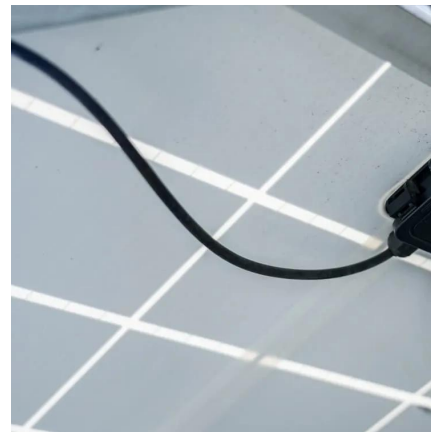
Boost energy storage with Industrial/Commercial & Home BESS, powered by lithium batteries. Ensure grid stability, savings, & backups. Plus, power base stations with Huijue Energy ...

[WhatsApp](#)

### BESS Outdoor Power Supply Price in South America Trends ...

Summary: Exploring the BESS (Battery Energy Storage System) outdoor power supply market in South America? This article breaks down pricing trends, regional demand drivers, and cost ...

[WhatsApp](#)



### BESS Costs Analysis: Understanding the True Costs of Battery

BESS stands for Battery Energy Storage Systems, which store energy generated from renewable sources like solar or wind. The stored energy can then be used when demand ...

[WhatsApp](#)

### Where to Buy Outdoor Power Supply in Cape Verde A Complete ...

Looking for reliable outdoor power solutions in Cape Verde? This guide covers top stores, product recommendations, and tips for choosing



the best portable energy systems tailored to the ...

[WhatsApp](#)



### [Energy storage system of communication base station](#)

Base station energy cabinet: floor-standing, used in communication base stations, smart cities, smart transportation, power systems, edge sites and other scenarios to provide stable power ...

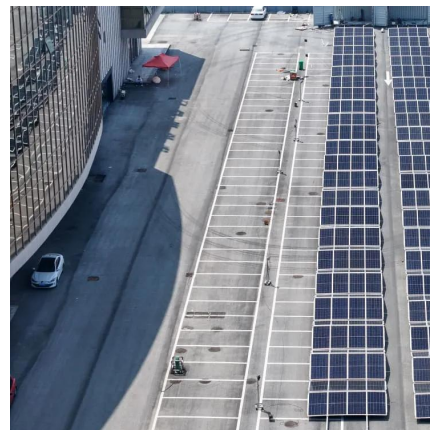
[WhatsApp](#)



### [Battery Energy Storage Systems for Sale . 211](#)

Get in touch with our experts today via enquiry form, email, phone, or live chat, to discuss your power requirements and find the perfect Battery Energy Storage System for your project, ...

[WhatsApp](#)



### [Base Station Components . Radio Comms Warehouse](#)

The NOVA range of power supplies is the most extensive by far. Each unit has been developed over the years incorporating value added features such as metering and adjustable voltage. ...

[WhatsApp](#)





### **what kind of power supplies do you guys use for base station**

13.8v and 30a is fairly standard for a shack. That radio should run from 11.73v to 15.87v but at 12v and 5 amps, you'll probably put too much demand on that little power supply. I use a switching ...

[WhatsApp](#)



## **Contact Us**

---

For catalog requests, pricing, or partnerships, please visit:  
<https://www.straighta.co.za>