

Can the inverter use 24v





Overview

Can a 24V inverter run a 12V battery?

Majority of inverters can only support 24V or 12V. Some inverters may provide separate connections for 24V and 12V, but they are the exception to the rule. If you somehow get the inverter to run, it will not be able to carry any load. There are only two solutions, get a 12V inverter or combine two 12V batteries in a series.

What is the difference between 12V vs 24V inverters?

Efficiency is an important factor when choosing between 12V vs 24V inverters. In general, 24V inverters are more efficient than their 12V counterparts, especially for larger systems. The efficiency difference becomes more noticeable as you increase the power demand of the system.

Are 24V inverters a good choice?

24V inverters offer a significant advantage in terms of battery efficiency. Because the system operates at a higher voltage, the current draw is lower, which reduces the strain on the battery bank and prolongs battery life. This makes 24V inverters a better choice for larger systems or those that require long-lasting power.

Can a 12V battery bank be used with a 24V inverter?

If you do decide to get a battery bank, the voltage must match the inverter and PV array. Again you can connect 12V batteries in a series to match a 24V solar array or inverter. To keep it simple, if you are in an RV or any motorhome, use a 12V for the inverter and batteries.

What is a 24V inverter used for?

Backup power systems for single devices like lights or small appliances. 24V inverters are better suited for larger systems where you need to power multiple devices or larger appliances. They are commonly used in: Larger RVs



or mobile homes with more electrical equipment. Off-grid homes that require more power.

What is the difference between 12V and 24v battery systems?

It depends on your system's size, the quality of the inverter, and your power needs. In general, 24V inverters are better for larger systems, while 12V inverters work well for smaller setups. When choosing between 12V and 24V battery systems, it's important to understand their differences. Let's take a look the table below:



Can the inverter use 24v



12V vs 24V Inverters Key Differences and Which One is Right for ...

A 12V inverter is designed to handle lower power output and is typically suited for smaller applications, while a 24V inverter offers higher efficiency and can power larger ...

[WhatsApp](#)

[How to connect 48V panels to 24V installation](#)

Good day, I've installed a 24V solar system consisting of 5 solar panels, a battery bank with 8 x 102Ah deep cycle batteries, 2 x 5 - 30A solar charger controllers and 3000W x ...

[WhatsApp](#)



[Can I Connect a 12V Inverter to a 24V Battery Bank](#)

Connecting a 12V inverter directly to 24V can cause the inverter to overheat, shut down, or suffer permanent damage. Some inverters have built-in protections that might shut ...

[WhatsApp](#)

24v Inverter, 24v DC to 120v/240v AC Power Inverter , inverter

24V 600w inverter with peak power 1200w, which is a modified sine wave, converts your car battery power to AC power 110/120 Volt or



220/230/240 Volt for options, with a safe charging ...

[WhatsApp](#)



Can I Run a 12V Inverter on a 24V Battery? Solutions and Best ...

Connecting a 12V inverter to a 24V battery can cause damage to the inverter. The inverter is designed to operate at a specific voltage and a mismatch can lead to overheating, ...

[WhatsApp](#)



12V vs 24V Inverter: What's The Difference & Which is Better

When choosing an inverter for your solar system, consider 12V for small setups, 24V for medium-sized systems, and 48 voltage inverter for large installations. Higher voltages offer better ...

[WhatsApp](#)



Can I Use a 24V Inverter with a 12V Battery? Compatibility and

A 24V inverter needs a 24-volt power source to operate efficiently and safely. Connecting it to a 12V battery will result in inadequate voltage, which can prevent the inverter ...

[WhatsApp](#)





[Frequently Asked Questions about Inverters](#)

Frequently Asked Questions about Inverters How much battery capacity do I need with an inverter? As a rule of thumb, the minimum required battery capacity for a 12-volt system is ...

[WhatsApp](#)



12V vs 24V vs 48V Inverter: How to Choose the Right System for ...

Confused about choosing between 12V, 24V, or 48V inverter systems? Discover which voltage is best for RV, solar, and off-grid setups. Learn the pros, cons, efficiency, cable ...

[WhatsApp](#)

[Can I Run a 12V Inverter on a 24V Battery?](#)

Direct voltage matching is the best option, using 12v batteries for 12v inverters and 24v batteries for 24v inverters. If this is not possible, it can be solved by a DC-DC converter or ...

[WhatsApp](#)



12V VS 24V Inverter: What are the Differences and How to Choose

When it comes to choosing the right inverter for your power needs, understanding the difference between 12V and 24V systems is crucial. Both options have their advantages and ...

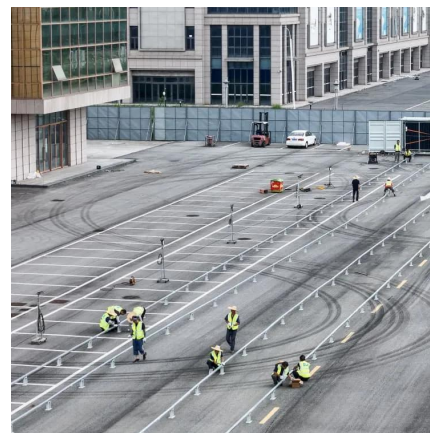
[WhatsApp](#)



[How to Convert 12V Solar Panels to 24V](#)

With a 24V system, you get twice the power without dealing with extra weight. Larger inverters. Many DIY setups and RVs use 12V inverters, but if you need a lot of power (between 1000W ...

[WhatsApp](#)



12V vs 24V Inverter: What's the difference between 12 and 24 Volt

24V inverters offer better performance with more power intensive systems such as homes or larger appliances. Usually, 24V inverters are great for 1000 - 5000 watt inverters. You don't ...

[WhatsApp](#)

[Can I Connect a 12V Inverter to a 24V Battery Bank](#)

Connecting a 12V inverter directly to a 24V battery bank is a common mistake that can have costly consequences. The core reason lies in voltage compatibility: a 12V inverter is ...

[WhatsApp](#)





12V inverter with 24V battery bank?

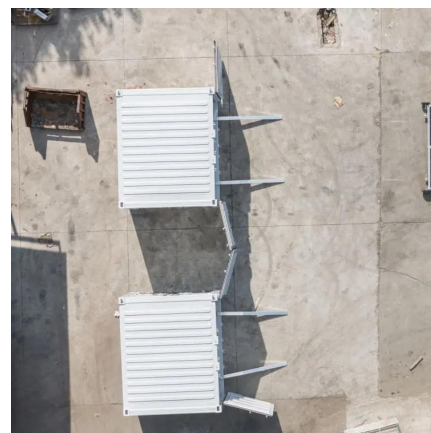
However, I want a 24V system (battery bank) and the Moringstar inverter is 12V. I have read where it is possible to use a 24-to-12 volt step-down converter as a battery equalizer which is ...

[WhatsApp](#)

Using a 12 V electronic appliances into a 24 Volt system?

Hello guys, I am new here and just started to follow solar energy in . Can I use or plugged in my 12 Volt appliances into a 24 Volt inverter? Also, what option should I use ...

[WhatsApp](#)



12V vs 24V Inverters Key Differences and Which One is Right for ...

Inverters come in different voltage configurations, with 12V and 24V being the most common. The key difference between the two lies in the amount of power they can handle and ...

[WhatsApp](#)

Contact Us

For catalog requests, pricing, or partnerships, please visit:
<https://www.straighta.co.za>