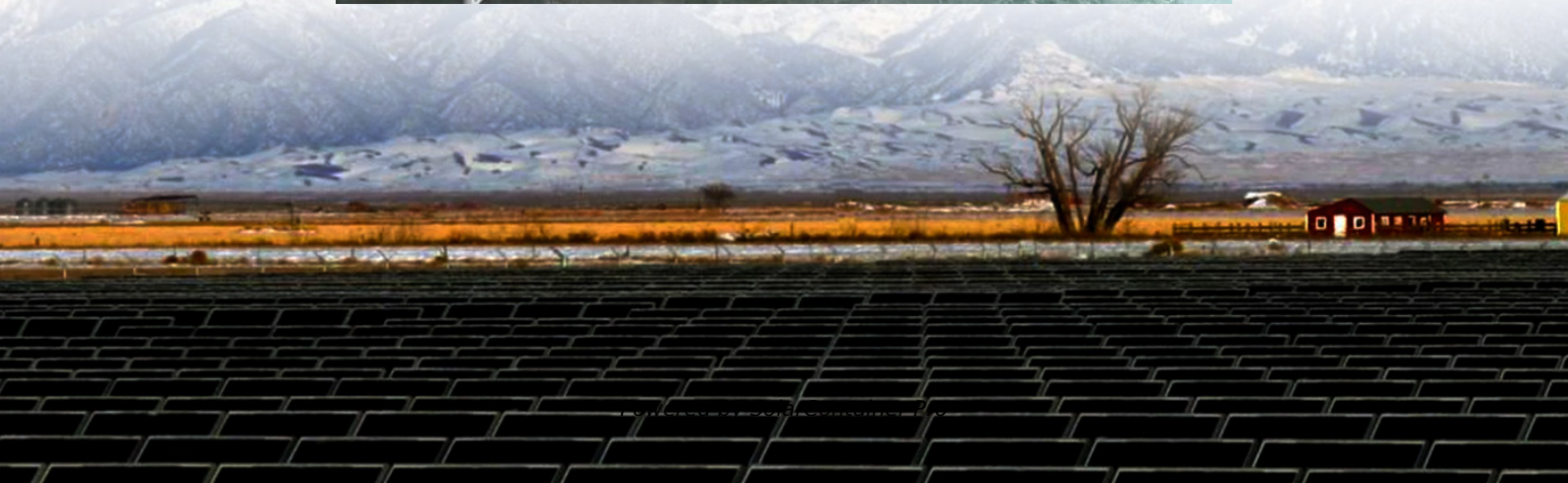


Can the inverter still be used when connected to high voltage power





Overview

Can you use a power inverter if a charger is low voltage?

If the appliance label states that the charger or adapter produces a low-voltage DC or AC output (30 volts or less), there should be no problem powering that charger or adapter. Safety Warning: 110 Volts of current can be lethal. Improper use of a power inverter will result in property damage, personal injury, or loss of life.

What can a power inverter do?

A power inverter changes DC power from a battery into conventional AC power that you can use to operate all kinds of devices . electric lights, kitchen appliances, microwaves, power tools, TVs, radios, computers, to name just a few.

How does a portable inverter work?

You just connect the inverter to a battery, and plug your AC devices into the inverter . and you've got portable power . whenever and wherever you need it. The inverter draws its power from a 12 Volt battery (preferably deep-cycle), or several batteries wired in parallel.

How do you use a power inverter?

A very simple way to use an inverter for emergency power (such as during a power outage), is to use a car battery (with the vehicle running), and an extension cord running into the house, where you can then plug in electrical appliances. What size inverter should I buy?

We carry many different sizes, and several brands of power inverters.

What happens if a power inverter is improperly used?

Improper use of a power inverter will result in property damage, personal injury, or loss of life. Please read and follow carefully the instructions in the



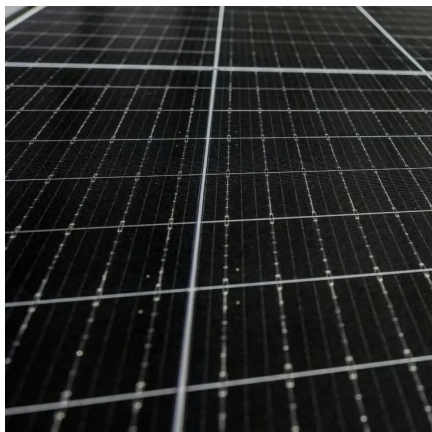
Owner's Manual provided with every inverter for important safety considerations and precautions. Place the inverter on a reasonably flat surface, either horizontally or vertically.

Which Inverter should I Choose?

If you wish to use those items with an inverter, then choose a Pure Sine Wave inverter. If you mostly want to run lights, TV, microwave oven, tools, etc, a Modified Sine Wave inverter is fine for your needs. We often are asked if computers will work with Modified Sine Wave.



Can the inverter still be used when connected to high voltage power



[What You Need To Know About a High Volt Inverter](#)

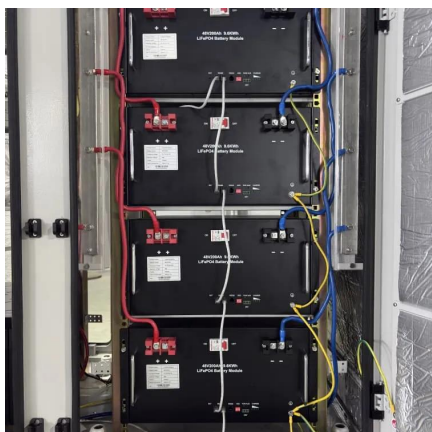
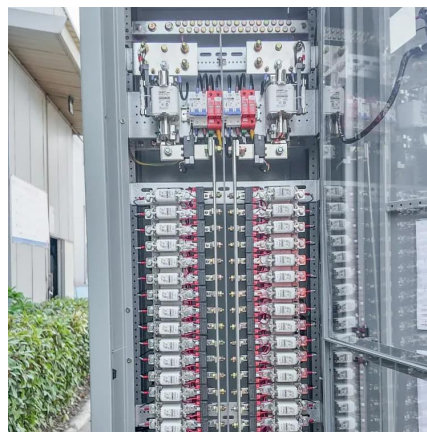
A high-voltage inverter is designed to convert DC power into AC at a higher voltage than a standard inverter. It can accept inputs from high-voltage power sources and then convert them ...

[WhatsApp](#)

[5 Reasons Your Inverter Keeps Shutting Off](#)

Too much power (high voltage) is bad for the inverter, and so is too little of it. With the right cable wires these problems can be avoided. You can find information on inverter cable sizes in the ...

[WhatsApp](#)



[Should Inverter Be On When Plugged Into Shore Power?](#)

Should you keep your inverter plugged in? Does it do any harm to you or your RV? There are some advantages and disadvantages when leaving your inverter on all the time when plugged ...

[WhatsApp](#)

[Inverter: Frequently Asked Questions \(FAQ\) . inverter](#)

A: Yes, when used for 300 watts load, the general car battery can provide power for approximately 25-55 minutes in the case of the



engine being turned off. If the load is a laptop ...

[WhatsApp](#)



High-voltage VS Low-voltage Inverters: What's the difference?

You'll learn what high-voltage and low-voltage inverters do, how they work, and where each type is best used. We'll also talk about the benefits and drawbacks of each, along ...

[WhatsApp](#)



Powering On: The Pros and Cons of Leaving Your Inverter On All ...

Even when no appliances are connected, the inverter still consumes power to operate its internal components and standby mode. This can lead to reduced battery life, ...

[WhatsApp](#)



Whats is a High Voltage Hybrid inverter? What are Key ...

High voltage hybrid inverters typically offer better efficiency due to lower current flow, resulting in less energy loss through heat. This also reduces the wear on components, ...

[WhatsApp](#)



The Difference Between High Voltage Converters and Inverters

Inverters focus on converting DC to AC, enabling AC-powered devices with DC energy sources. The input and output characteristics also differ; converters handle a variety of ...

[WhatsApp](#)



[High Voltage Inverter: What They Are, How They Work, and](#)

A high voltage inverter can handle higher power output and quality, and can reduce the power losses and distortions that occur during the conversion and transmission of electricity.

[WhatsApp](#)



High Voltage Inverters: Understanding Its Benefits and Applications

Yes, using higher voltage in solar energy systems can be beneficial for several reasons: Increased Efficiency: Higher voltage solar arrays reduce resistive losses, making the ...

[WhatsApp](#)



Frequently Asked Questions About Power Inverters , DonRowe

A very simple way to use an inverter for emergency power (such as during a power outage), is to use a car battery (with the vehicle running), and an extension cord running into the house, ...

[WhatsApp](#)



Frequently Asked Questions About Power Inverters , DonRowe

Frequently Asked Questions about Power Inverters. Get answers to all of you power inverter questions including what a power inverter is and what it can be used for, how to size and ...

[WhatsApp](#)



Contact Us

For catalog requests, pricing, or partnerships, please visit:
<https://www.straighta.co.za>