

Can the communication base station inverter be installed on the roof





Overview

Where should a rooftop inverter be mounted?

A rooftop inverter mounting project by Standard Solar. When installers choose to put inverters on the roof, the next step is finding the best possible mounting spot. When the 10-ft rule doesn't need to be followed, Standard Solar prioritizes a shaded, north-facing spot on a vertical wall or parapet.

Where should string inverters be housed on commercial rooftop solar projects?

The ideal place to house string inverters on commercial rooftop solar projects is indoors in a climate-controlled, locked room — but that's not always feasible. When ground-level mounting options are scarce, installers often put these fragile power electronics on the rooftop alongside the array.

Should a school district install a rooftop inverter?

Standard Solar has also chosen rooftop inverter mounting for several school district installations in the interest of safety. "You don't want vandalism, you don't want people to touch it, you don't want anyone getting hurt. Putting it up on the roof could be a relatively safe place," Colavito said.

Can solar inverters be installed on a roof?

PVCA repaired these rooftop inverters damaged by heat. Luke Pollinger, president of California-based solar O&M company PVCA, said he understands it's often easier for installers to mount inverters on the roof since the equipment has increased in voltage and decreased in weight over the years.

Why do AHJs install inverters on rooftops?

On its rooftop installs, the company almost always installs inverters on the rooftop for a few reasons. For one, many AHJs in its service territory are still adhering to the 2014 NEC and its 10-ft rule, according to C.J. Colavito, VP of engineering.



Do Chint inverters fit on a roof?

Chint Power Systems created inverter accessories specifically for roof-mounted applications, including a shade cover and mounting brackets the company calls “legs.” Peter Hsiung, director of product management, said most of Chint’s customers prefer to mount inverters nearly flat on the roof for aesthetics and easy mounting.



Can the communication base station inverter be installed on the roof



[Rooftop Base Stations & Structure , Murphy Tower](#)

Fill out the form below and we'll get back to you. Specializing in rooftop installations of wireless communications infrastructure including base station shelters and custom support structures.

[WhatsApp](#)

Distributed Photovoltaic Power Station Application Scenarios-

These photovoltaic projects can not only be built on the roof and the ground, but also installed on the curtain wall. Photovoltaic systems can also be installed on vehicles or ...

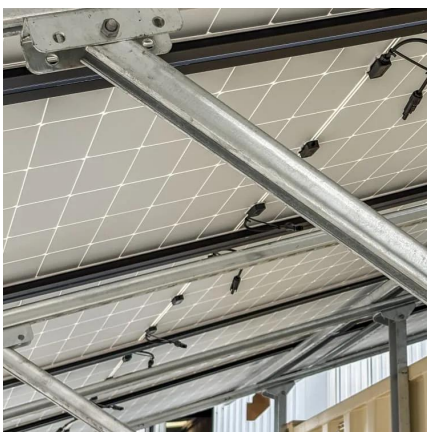
[WhatsApp](#)



[Tips for solar inverter mounting on commercial rooftops](#)

If installers have no other choice but the roof, he advises they mount inverters on a north-facing wall that's fully shaded and easily accessible, as well as at least 4 ft off the roof's ...

[WhatsApp](#)



Yes or no: Should 1,500 volt solar inverters be installed on rooftops?

Matt Marx, Strategic Marketing Manager at SMA:
"No, because current code requirements prohibit the use of 1,500 V inverters on anything



classified as a "building," which ...

[WhatsApp](#)



Enhancing Inverter Protection Best Practices for Outdoor ...

In some field installations, the communication line, AC line, ground cable and other cables have protective sleeves outside, one end of which extends to the inverter wiring bin, ...

[WhatsApp](#)



Base Station's Role in Wireless Communication Networks

Yes, base stations can be used in remote areas to provide wireless communication services. In these areas, deployable solutions like satellite-linked base stations or solar-powered units ...

[WhatsApp](#)



Rooftop tower base station: the 'invisible communication giant' ...

The core mission of the rooftop tower base station is to expand signal coverage. In the vast and remote mountainous areas with complex terrain and dispersed populations, traditional ground ...

[WhatsApp](#)

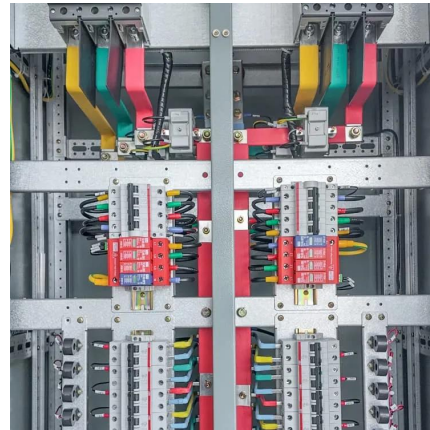




r/amateurradio on Reddit: Does anyone have experience with RFI ...

Greetings ! I'm new to amateur radio, studying for my 1st license, and recently purchased a Yaesu FT-710 base station. Last fall we also installed a Sunsource solar system on our home in CT ...

[WhatsApp](#)



Rooftop Solar: Top 5 Mistakes To Avoid In Inverter Installations

"Never install the inverter under direct sunlight. If the inverter is installed under direct sunlight, the internal temperature of the inverter starts rising and its efficiency declines. ...

[WhatsApp](#)

Contact Us

For catalog requests, pricing, or partnerships, please visit:
<https://www.straightta.co.za>