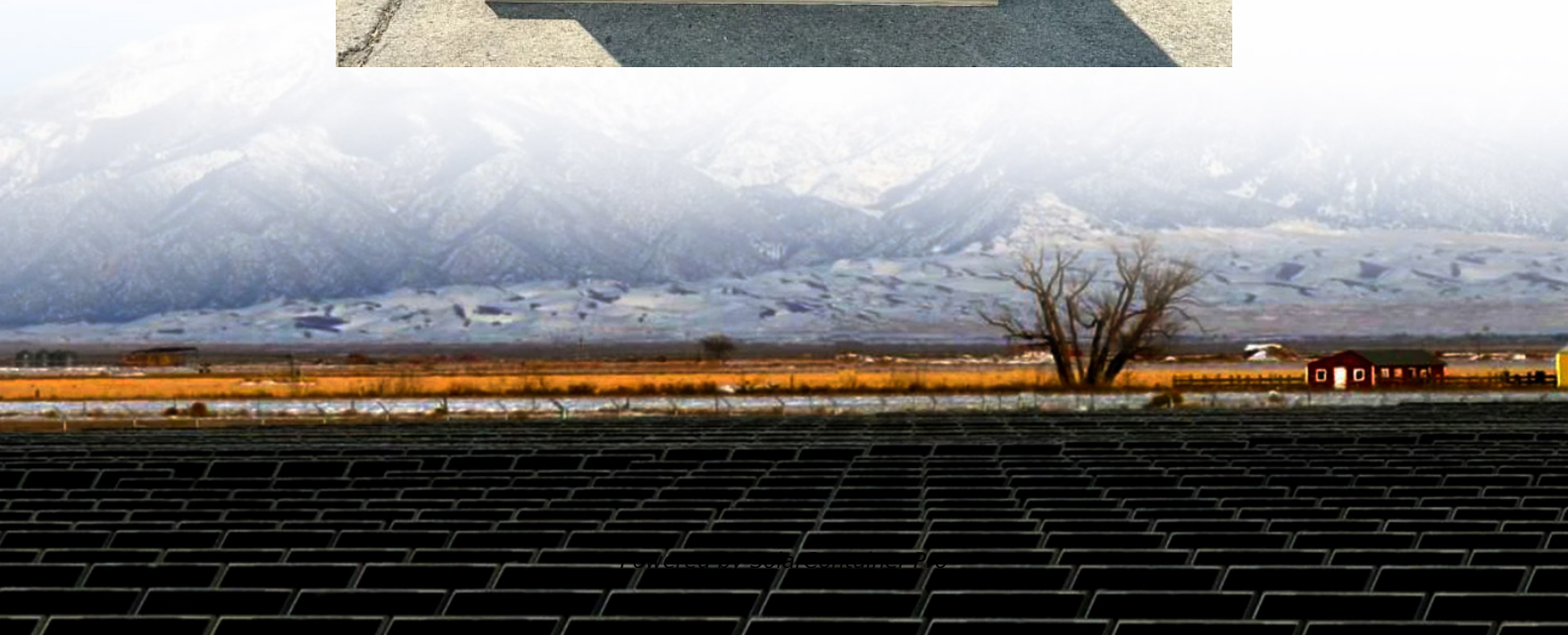


Can the battery cabinet still be used after it expires





Overview

Can you use expired batteries?

Batteries that have expired can be used, but a pre-use test is required. Household batteries are generally divided into two types, one is disposable batteries, mainly alkaline batteries, super heavy duty batteries, and button batteries. The other is secondary batteries, mainly nickel-metal hydride batteries, and lithium-ion batteries.

How long do batteries last if not used?

Most unused alkaline batteries will last between five and 10 years, while Ni-MH batteries have a shelf life of three to five years of non-use. Most expiration dates are conservative so most likely your expired batteries will still have a charge for some time after, if they are stored in optimal conditions. Do batteries run out when not used?

.

What is the shelf life of a battery?

"Shelf life" refers to how long batteries will hold their charge without use, specifically for non-rechargeable chemistries. In terms of rechargeable batteries, shelf life refers to how long the battery can sit before needing a charge or expiring. Shelf life of batteries largely depends on the size, chemistry, and manufacturer.

What is the expiration date of a battery?

The expiration date is usually the date past which the manufacturer will not guarantee that full life is left. It is probably a conservative date, so most batteries will have a full life after that time. Better batteries will show a later expiration date. there is no battery expiration date code. Why do batteries have expiry?

.



What happens if a battery expires?

Therefore, understanding the expiration date on batteries and replacing expired batteries in a timely manner is a responsibility not only to your devices but also to the environment. The most obvious consequences are the decline in battery performance and potential safety hazards.

Do disposable dry batteries have an expiration date?

But disposable dry batteries do have an expiration date. Usually you see best before date on the LABEL of the battery, or you will see several numbers directly on the LABEL of the battery, such as 0528, or 05-2028, which means it is best to use it before this time.



Can the battery cabinet still be used after it expires



How long can a 2mg clonazepam be in a cabinet and still be good?

The shelf life can be up to 10 years or more after the expiration date. Some drugs may lose some efficacy. Liquid medicines are more susceptible to the actual stamped ...

[WhatsApp](#)

Shelf Life of Various Battery Types

Typically, lithium batteries have a shelf life of 10-15 years, while zinc-carbon batteries last for about 2 years. Lead-acid batteries, on the other hand, can only maintain their full capacity for ...

[WhatsApp](#)



[Do Unused Batteries Expire? A Complete Beginner's Guide](#)

A battery past its expiration date that hasn't gone bad means that it shouldn't be expected to have a full life anymore. In simple terms, a battery that has gone bad usually ...

[WhatsApp](#)



When Does a Battery Expire and How to Extend its Lifespan

By following these tips, you can help prolong the lifespan of your battery and ensure it lasts as long as possible before needing to be replaced.



Causes of Battery Discharge ...

[WhatsApp](#)



Does it matter if transmitters or sensors are expired with g6

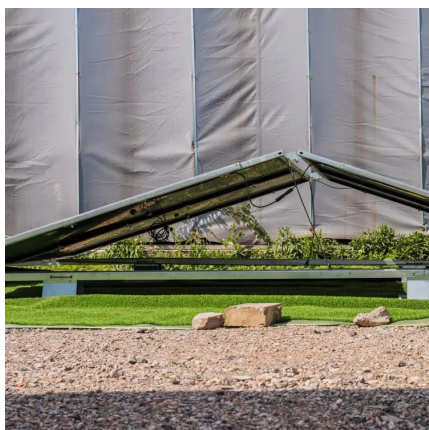
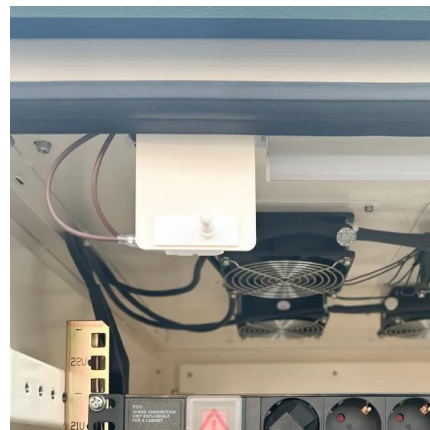
Will they still work?The expiration on the sensors has to do with how long they can guarantee sterilization. (Supposedly). I've used sensors well after the date and not only were they fine, ...

[WhatsApp](#)

Battery storage, shelf life, self-discharge, and expiration

As a rule of thumb, when your battery's total self-discharge is over 20 percent, you can consider the battery expired. You can find your battery's expected date of expiration on the packaging ...

[WhatsApp](#)



[do batteries expire?what happens if you use . Dukecell](#)

Batteries have a limited shelf life, which means that over time, even when not in use, they will gradually lose their ability to store electrical energy. The shelf life of batteries is ...

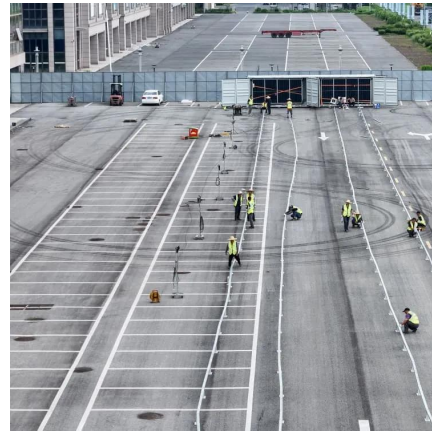
[WhatsApp](#)



Shelf-Life - U.S. Army Batteries

At this point the battery has entered its service life and may continue to be used while it is serviceable. For optimal performance, it recommended that lithium ion batteries be replaced 4

[WhatsApp](#)



Contact Us

For catalog requests, pricing, or partnerships, please visit:
<https://www.straighta.co.za>