

# **Can the base station use an external power supply**





## Overview

---

➤ Power Supply: Base station CB radios require an external power source, typically 120V AC, or a suitable power adapter, unlike mobile units that rely on vehicle batteries. Do base stations need a power supply?

Power Requirements: Base stations operate on 120V AC power rather than 12V DC, requiring either built-in power supplies or separate AC-to-DC converters. Size and Ergonomics: Designed for desktop use, these radios feature full-size controls, making operation more comfortable during extended sessions.

Do I need external power?

To operate continuously for more than a day without loss of power at the base station, provide external power. Sources of external power include: When you use an external power supply, the integrated battery provides a backup power supply, enabling you to maintain continuous operation through a mains power failure.

Which base station Radio will plug directly into my wall outlet?

We have selected the Galaxy DX2547 first, as this is the only base station radio that we offer that will plug directly into your wall outlet. You can choose to get a mobile CB radio, like the DX959B, but will require an additional power supply.

What are the components of a base station CB system?

Remember, the longer the CB antenna, the more potential range that you will have. The basic components for a Base Station CB System include a CB radio, power supply (if you are using a mobile CB radio instead of a base station CB radio), coax, and an antenna.

What is a base station & how does it work?

A base station is generally a radio system that is set up in a fixed location



such as house or building. Since a fixed location allows one to install a much taller antenna than an antenna on a vehicle, you can get significantly more potential range. Remember, the longer the CB antenna, the more potential range that you will have.

Can a SSB antenna be used as a base station?

Yes, with a proper 12V DC power supply (3-5 amps minimum) and base antenna system. However, dedicated base stations typically offer better features, ergonomics, and performance for home use. Typical range is 15-25 miles for local communications. With SSB and optimal conditions, 50+ mile contacts are possible.



## Can the base station use an external power supply

---



### Mobile as base station--How do I power this thing? : r/gmrs

For peak performance, best practice is to use a 13.8V regulated power supply. They're more money but most so called '12v' automotive accessories are actually designed to ...

[WhatsApp](#)

### CB Radio Base Station Equipment Recommendations and Advice

We have selected the Galaxy DX2547 first, as this is the only base station radio that we offer that will plug directly into your wall outlet. You can choose to get a mobile CB radio, like the ...

[WhatsApp](#)



### 12 Volt Lead-Acid Battery + Trickle Charger to Power Base-Station

Using a 12v battery will power the radio, but if you plan on transmitting, the voltage can drop. It probably won't cause issues with the 10watt radio you mentioned but with higher ...

[WhatsApp](#)

### [Choosing the right size power supply for your radio](#)

How do you power a mobile radio for use as a base station? Get a power supply. But this isn't a cut and dry, one-size-fits-all sort of thing. Here's





how to choose the right ...

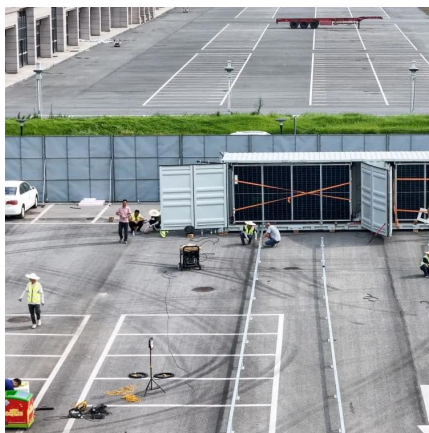
[WhatsApp](#)



[Why do base radios require an external DC power supply](#)

It also saves space since you could use just one power supply for multiple radios instead of each radio being big enough to have its own power supply. Additionally, some people power their ...

[WhatsApp](#)



**Why don't base stations come with built-in power supplies? : r**

Okay, I get that mobile rigs are meant for automobile use, so it makes sense there. But why aren't there any base stations with built-in power supplies? It just adds an additional hassle to buying ...

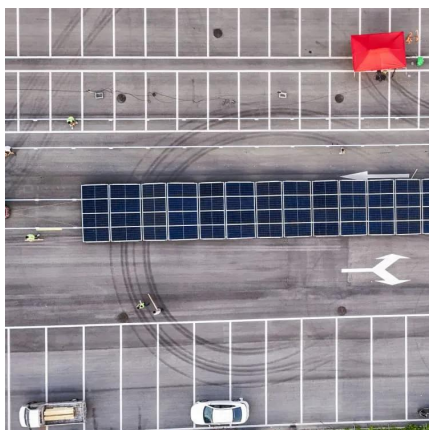
[WhatsApp](#)



[Do I ground a mobile unit when used as a base station.](#)

When i connect it to a DC power supply in the shack, does the mobile unit need to be grounded? From what i can see, the chassis does not have a ground lug on it. Also, the DC power supply ...

[WhatsApp](#)





### **Mobile as base station--How do I power this thing? : r/gmrs**

For peak performance, best practice is to use a 13.8V regulated power supply. They're more money but most so called '12v' automotive accessories are actually designed to be used when ...

[WhatsApp](#)



### **Why don't base stations come with built-in power supplies? : r**

Okay, I get that mobile rigs are meant for automobile use, so it makes sense there. But why aren't there any base stations with built-in power supplies? It just adds an additional ...

[WhatsApp](#)

## **Contact Us**

---

For catalog requests, pricing, or partnerships, please visit:  
<https://www.straighta.co.za>