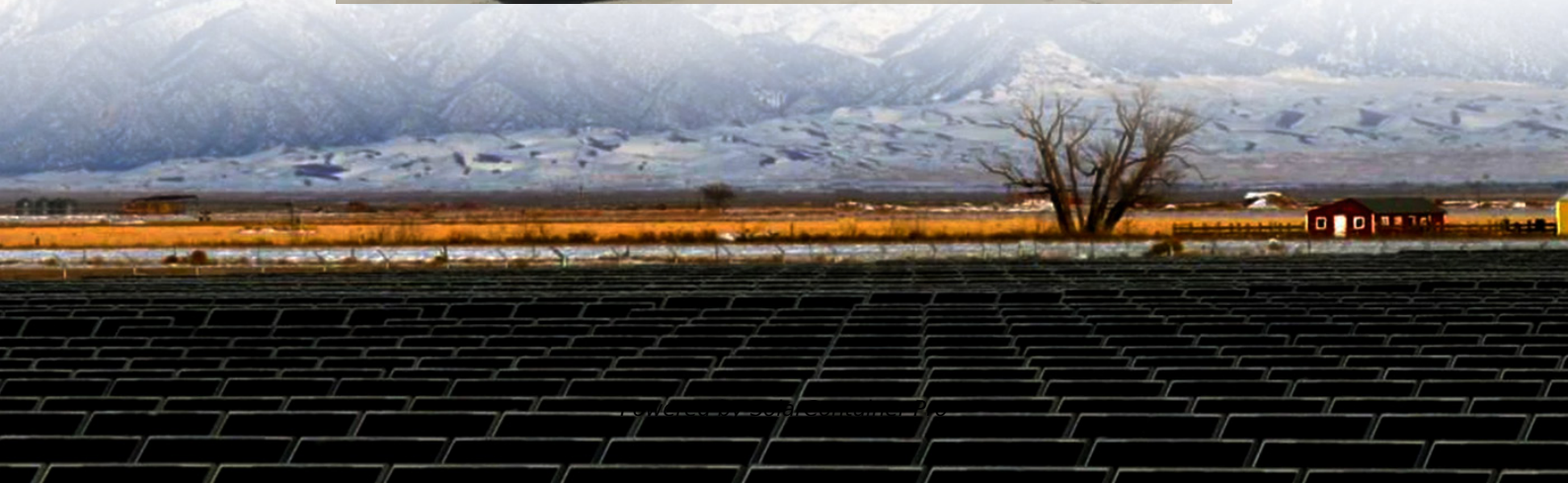


Can photovoltaic panels of different sizes be connected in series





Overview

Placing different modules in series is possible as long as the open circuit voltage (Voc) does not reach the maximum of the MPPT at cold temperatures. A few things to note first. Our MPPT Calculator excel sheet does not allow different types of modules in series, so be careful with that. Are solar panels connected in series?

When you connect solar panels in series, the total output current of the solar array is the same as the current passing through a single panel, while the total output voltage is a sum of the voltage drops on each solar panel. The latter is only valid provided that the panels connected are of the same type and power rating.

Can solar panels be wired in parallel vs series?

Before we talk about mixing solar panel sizes, let's have a refresher for some, or a crash course for others on how wiring solar panels in parallel vs series affects their voltage and amperage. Wiring solar panels in series adds their voltages while their amperages stay the same.

How should solar panels be connected?

Solar panels can be connected in series or parallel. Connecting solar panels in series is generally used in grid-tied solar systems. In a parallel connection, the positive terminals of all panels are joined together, and negative terminals of all panels are connected together. Be careful of using panels with the same current rating.

What happens if a solar panel is wired in series?

When mismatched solar panel sizes or mismatched solar panel series-strings are wired in parallel or series, the effect is VERY similar to the guidelines posted earlier, except for one change. Solar Panels wired in series get their voltages added while their amps stay at the lowest amperage of the panels in series.



Can you put solar panels in series?

Yes, you can. If there is no possibility to wire them in series or parallel, you need to add another charge controller. You will have multiple charge controllers for one battery. That's not a problem. Can you put solar panels of different current in series?

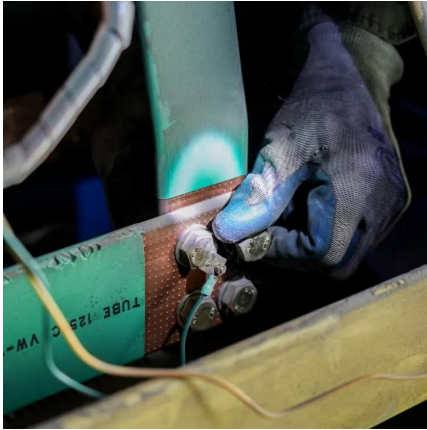
.

Are solar panels rated higher than system voltage?

The solar panels are of voltage rating higher than the system voltage. You have two different higher voltage solar panels, i.e., one 100W/24V and one 200W/24V that you want to connect to the already working 12 V solar power system comprising the two 12V 50 W solar panels connected in parallel from the previous scenario (see the picture above).



Can photovoltaic panels of different sizes be connected in series



Mixing Solar Panels that are Mismatched ? Clever Solar Power

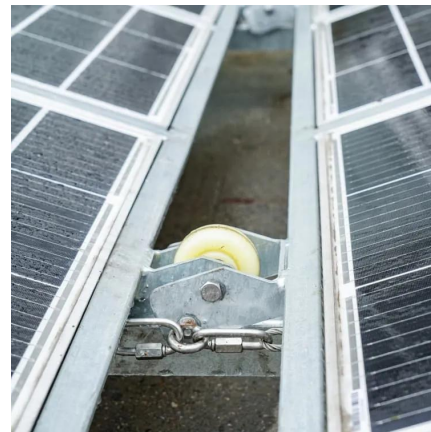
No, it's not advised to wire solar panels with different current in series. They should be wired in parallel if they have different current. Can you put solar panels of different voltage ...

[WhatsApp](#)

[Mixing solar panels - Dos and Don'ts](#)

There are two main types of connecting solar panels - in series or in parallel. You connect solar panels in series when you want to get a higher voltage. If you, however, need to get higher ...

[WhatsApp](#)



Calculation & Design of Solar Photovoltaic Modules & Array

When we connect N-number of solar cells in series then we get two terminals and the voltage across these two terminals is the sum of the voltages of the cells connected in series. For ...

[WhatsApp](#)

[Can you connect solar panels with different sizes?](#)

You can connect solar panels of different sizes, but doing so efficiently requires attention to the type of connection (series or parallel), the



voltage and current ratings of each panel, and the ...

[WhatsApp](#)



[Different size panels in series and parallel](#)

Putting the two 80v panels in parallel with three 126v panels will just drag down the 126v panels to 80v panels. The PV cells in 80v array will shunt the current from high voltage ...

[WhatsApp](#)



How to Combine Mismatched Solar Panels for Optimal Output

So, wiring different-sized solar panels in series is not an ideal solution. But, what is a better way? Let's calculate our expected power with parallel wiring. We'll introduce another ...

[WhatsApp](#)



[Should I connect my Solar Panels in Series or Parallel?](#)

Solar Panels are usually connected in series to obtain higher output voltage. This is usually the case with 24v systems. If we connect 4 x 150w Solar Panels in series the total ...

[WhatsApp](#)





How to connect solar panels together: Series, parallel, combo

Series connections are ideal for larger home solar systems (4kW+) and long distances to the inverter, but they're vulnerable to shading issues since one shaded panel ...

[WhatsApp](#)



Connecting different sized Victron Energy PV modules: Series or

Placing different modules in series is possible as long as the open circuit voltage (Voc) does not reach the maximum of the MPPT at cold temperatures. A few things to note ...

[WhatsApp](#)

What Happens When We Connect Different Rating of Solar Panels?

In a series connection, the positive terminal of a solar panel to the negative terminal of the next solar panel. This needs to be continued until you have one last free positive and ...

[WhatsApp](#)



How to Wire Solar Panels in Series-Parallel Configuration?

The following solar panel and battery wiring diagram shows how to wire a four 12V Solar Panels in series-parallel connection to a 24V, 400Ah battery with an automatic inverter ...

[WhatsApp](#)



[How to connect 3 solar panels in series and parallel](#)

Solar panels can be connected in various ways, notably in series, parallel, or a combination of both. Understanding these configurations is crucial for optimizing the energy ...

[WhatsApp](#)



[Can I Use Solar Panels of Different Wattage?](#)

First we need to explain how solar panels are connected and how it affects the voltage and amperage (current). This is necessary to understand why panel watts should be matched.

...

[WhatsApp](#)

[How to Wire Two or More Solar Panels in Parallel](#)

How to wire in parallel both identical and different solar panels, what happens to the panels in case of shading, how to optimize the system, what is the function of the blocking diode and ...

[WhatsApp](#)





Contact Us

For catalog requests, pricing, or partnerships, please visit:
<https://www.straighta.co.za>