

Can photovoltaic inverters be connected to three phases





Overview

Yes, a single-phase inverter can be used on a three-phase load. The inverter will synchronize with one of the phases in a three-phase grid, delivering power efficiently. Do I need a 3 phase solar inverter?

For larger installations, you'll typically need a 3 phase solar inverter rather than a single-phase inverter. These 3 phase solar inverters handle much more power, typically exceeding 5kW, making them ideal for commercial and industrial applications with larger solar panel arrays.

Can a single-phase inverter be connected to a three-phase power grid?

If there is already a three-phase power grid, the single-phase inverter only needs to be connected to 1 phase wire (i.e., live wire), 1 neutral wire, and 1 ground wire. Therefore, there is no electrical problem. 2. There is no problem with the measurement using a three-phase four-wire electric meter.

What is the difference between a three-phase inverter and solar panels?

This is how your home or business is able to make effective use of the energy generated by your solar panels. A three-phase inverter is on the other hand can produce three-phase power from the PV modules and can be connected to the three-phase equipment or grid.

Which solar inverter is best for a single-phase connection?

For a single-phase connection, a single-phase solar inverter should be installed – fairly straightforward. For a 3-phase connection, on the other hand, there are a number of options. In most cases the best and simplest option is to get a 3-phase inverter, which will distribute the solar power evenly across all three phases.

Should PV inverters be installed in sets of 3?

The obvious and easiest solution would be to install PV inverters in sets of three so that all phases would be accounted for, meaning no phase on the



three phase panel would not be connected to at least one PV inverter output on any leg. Why the big fuss?

Phase imbalances.

Do I need a solar inverter if I don't have a PV system?

If you don't have a solar PV system, you may very well have no idea if you're on a single-phase or 3 phase solar inverter connection. Regardless of which one you have, the electricity you use is most likely being delivered seamlessly to all of your appliances – so it's not really anything to be concerned about.



Can photovoltaic inverters be connected to three phases



[Enphase Energy System planning guide technical brief](#)

Four IQ Battery 5P units can be connected in a single 80 A circuit, with up to 12 IQ Battery 5P units supported across three phases. When designing a system, follow local regulations for ...

[WhatsApp](#)

Can single-phase and three-phase inverters be connected together

If there is already a three-phase power grid, the single-phase inverter only needs to be connected to 1 phase wire (i.e., live wire), 1 neutral wire, and 1 ground wire. Therefore, there is no ...

[WhatsApp](#)



FAQ: Can I connect a single-phase inverter to a three-phase panel?

The obvious and easiest solution would be to install PV inverters in sets of three so that all phases would be accounted for, meaning no phase on the three phase panel would not be connected ...

[WhatsApp](#)

AC-coupling Enphase IQ Microinverters with Victron battery ...

2 Introduction to AC-coupled systems In AC-coupled systems, IQ Series Microinverters and battery inverters are connected to a main AC



line, where PV power is first used to power the ...

[WhatsApp](#)



How to Connect a Single-Phase Inverter to a Three-Phase Power ...

Step-by-step guide on connecting a single-phase inverter to a three-phase home power system. Learn the necessary safety measures, wiring setup, and practical tips for ...

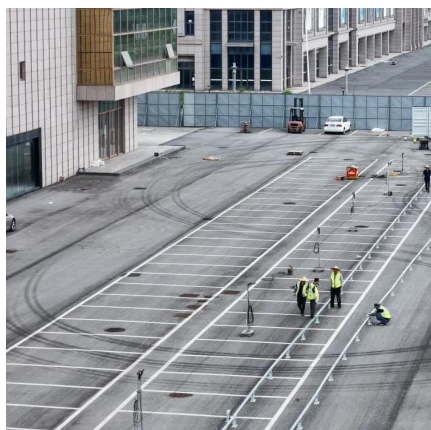
[WhatsApp](#)



[Solar PV and single-phase vs 3-phase electricity](#)

For a single-phase connection, a single-phase solar inverter should be installed - fairly straightforward. For a 3-phase connection, on the other hand, there are a number of ...

[WhatsApp](#)



The Differences between Single-phase Inverter and Three-phase Inverter

A three-phase inverter is on the other hand can produce three-phase power from the PV modules and can be connected to the three-phase equipment or grid. A three-phase ...

[WhatsApp](#)



Can a Single-Phase Inverter Be Used for a Three-Phase Load?

Yes, a single-phase inverter can be used on a three-phase load. The inverter will synchronize with one of the phases in a three-phase grid, delivering power efficiently.

[WhatsApp](#)



How to connect three-phase inverter to solar energy , NenPower

Connecting a three-phase inverter to solar energy involves several key components and considerations: 1. Understand system components, including the inverter ty...

[WhatsApp](#)



[Three Phase Inverters - Design Guidelines \(North America\)](#)

Background The three phase inverters: SE14.4KUS, SE43.2KUS & SE33.3KUS, and three phase inverters with synergy technology: SE66.6KUS & SE100KUS, differ in some of their design ...

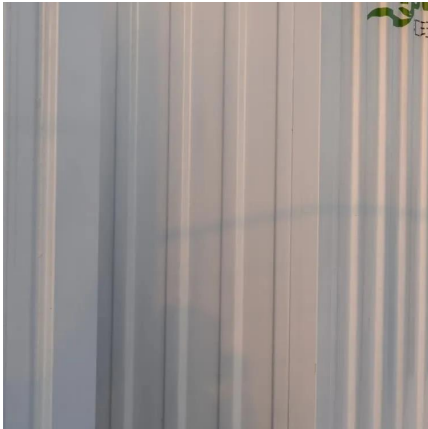
[WhatsApp](#)



[One, two or three inverters for a three phase system.](#)

You could, for example, use a pair of Fronius 11.4kW three phase inverters with their output combined in a solar load center. The total maximum output would be 63.2A @208V.

[WhatsApp](#)



How to do a 3 phase balanced load? , Greentech Renewables

How can I connect single phase inverters to three phase service? I need to install a PV system on a small commercial building which has three phase power. The owner has 2 SMA SB 8000US ...

[WhatsApp](#)



Contact Us

For catalog requests, pricing, or partnerships, please visit:
<https://www.straighta.co.za>