

Can ordinary lithium batteries be used as inverters





Overview

Yes, you can connect an inverter to a lithium battery. Lithium batteries, particularly Lithium Iron Phosphate (LiFePO₄) batteries, are well-suited for use with inverters due to their high efficiency, lightweight design, and ability to deliver consistent power. What is a lithium battery for inverter?

Lithium offers unmatched performance, a longer lifespan, and better efficiency than traditional batteries. Whether you're setting up a home backup system, solar power solution, or mobile energy unit, this guide will walk you through everything you need to know about lithium batteries for inverters. Part 1.

Should you use a lithium-ion battery for a home inverter?

A lithium-ion battery for a home inverter can significantly enhance your home's energy storage capabilities. This translates to more reliable power during outages and better management of renewable energy resources like solar panels. Lithium-ion batteries require less maintenance and have a longer lifespan compared to traditional batteries.

Which battery should I use for my inverter?

When it comes to powering your inverter, there are a few alternative options to consider aside from lithium batteries. While lithium batteries have gained popularity due to their numerous advantages, they may not be the right choice for everyone. One alternative option is lead-acid batteries.

Can a solar inverter be used with a lithium battery?

Integrating a solar inverter with a lithium battery can take your renewable energy setup to the next level. This combination allows for better energy storage, improved efficiency, and greater resilience during power outages. LiFePO₄ batteries are particularly well-suited for solar applications because of their thermal stability and long cycle life.

How do I install a lithium battery for inverter?



Understanding your inverter type is crucial to avoid potential issues down the line. The first step in installing a lithium battery for inverter with an existing inverter is to assess your current setup. This includes evaluating the condition of your inverter and ensuring it meets the necessary specifications for lithium-ion batteries.

Can a lithium battery be used with a sine wave inverter?

Some examples include pure sine wave and modified sine wave inverters. These inverters may work better with lithium-ion batteries. Understanding your inverter type is crucial to avoid potential issues down the line. The first step in installing a lithium battery for inverter with an existing inverter is to assess your current setup.



Can ordinary lithium batteries be used as inverters



Can I Use an Inverter to Charge a Battery? Benefits of Inverter

Many inverters can handle various battery types, including lead-acid and lithium-ion. This flexibility makes it easier to select an inverter that fits your specific needs.

[WhatsApp](#)

[Lithium Battery for Inverter: Pros, Specs, and Tips](#)

A lithium battery for inverter is a rechargeable battery that uses lithium-ion technology to store energy. It works with inverters by delivering direct current (DC), which the ...

[WhatsApp](#)



Which Battery is Best for Solar Inverter: A Comprehensive ...

Looking to choose the best battery for your solar inverter? This comprehensive guide simplifies the selection process by comparing lead-acid and lithium-ion batteries while ...

[WhatsApp](#)

[Can we use a lithium battery for an inverter?](#)

:- Yes, you can use a lithium battery for an inverter, and in many ways, it's a better choice than traditional lead-acid batteries. Lithium ion battery is the best choice if you're ...



[WhatsApp](#)



[Can I Connect Inverter to Lithium Battery?](#)

Yes, you can connect an inverter to a lithium battery. Lithium batteries, particularly Lithium Iron Phosphate (LiFePO4) batteries, are well-suited for use with inverters due to their ...

[WhatsApp](#)



Do Lithium Batteries Need a Special Inverter? , IMPROVE BATTERY

Lithium batteries, including lithium-ion batteries and lithium iron phosphate (LiFePO4) batteries, don't necessarily require a special inverter specifically designed for lithium batteries.

[WhatsApp](#)



Compatibility of Lithium-Ion Batteries with Existing Inverters

Can I use a lithium-ion battery with any inverter? While many inverters can be adapted to work with lithium-ion batteries, it's essential to check the specifications and compatibility of your ...

[WhatsApp](#)





Importance of Compatibility Between Inverter and Lithium Battery

Lithium batteries are known for their longevity, but their lifespan can be significantly shortened if paired with an incompatible inverter. Inverters that are not designed to work with ...

[WhatsApp](#)



[Can Lithium Batteries Work With Any Type of Inverter?](#)

When setting up solar energy systems or home energy storage, a common question arises: Are lithium batteries compatible with all inverters? The short answer is no - proper ...

[WhatsApp](#)

Can You Use A Noco 10 Battery Charger While Connected To An Inverter?

1 day ago· The NOCO Genius 10 is ideal for pairing with inverters due to its advanced microprocessor control, which prevents overcharging. Its 10-amp output efficiently charges ...

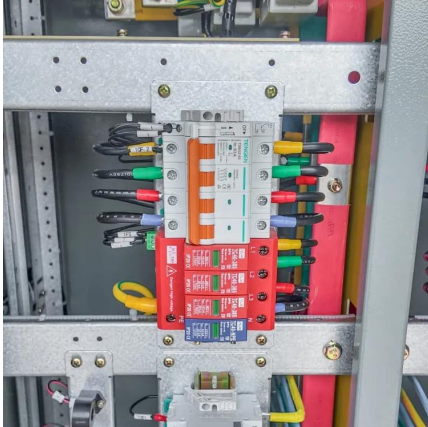
[WhatsApp](#)



Lithium Battery for Inverter: Top 7 Powerful Benefits to Choose

Discover why a lithium battery for inverter is the best choice. Learn about the advantages, lithium ion battery price, 12V & 200Ah options for your energy needs.

[WhatsApp](#)



Understanding the Basics of Connecting Lithium Batteries to Inverters

Connecting a lithium battery to an inverter is crucial for converting the stored DC (Direct Current) energy into usable AC (Alternating Current) for household or industrial ...

[WhatsApp](#)



[Complete Guide to Inverter Batteries - NPP POWER](#)

What exactly is an inverter battery? Inverter batteries perform several critical functions: Energy Storage They store electrical energy for future use, offering backup power ...

[WhatsApp](#)



Will a lithium battery work on this inverter? : r/batteries

Yes, you can use a battery that provides a sustained 100A current, if you want nearly 2000W. It probably cannot safely charge it. It might be able to charge an 8S LifePo4 with appropriate BMS.

[WhatsApp](#)





How Lithium-Ion Inverter Batteries Work: A Complete Guide for ...

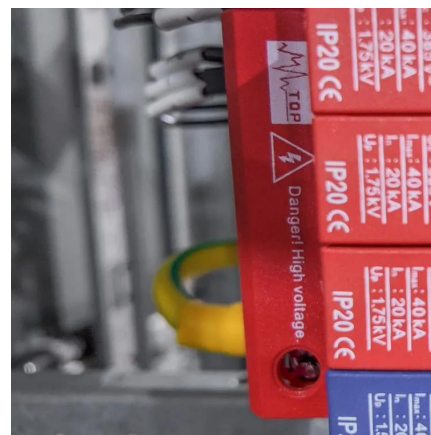
How Lithium-Ion Inverter Batteries Work: A Complete Guide for Homeowners In today's energy-conscious world, lithium-ion inverter batteries have become the go-to choice for homeowners ...

[WhatsApp](#)

[Do You Need a Special Inverter for Lithium Batteries?](#)

Effective setups often include inverters specifically designed or certified for use with lithium battery technology, as evidenced by multiple case studies and user reports.

[WhatsApp](#)



Contact Us

For catalog requests, pricing, or partnerships, please visit:
<https://www.straighta.co.za>