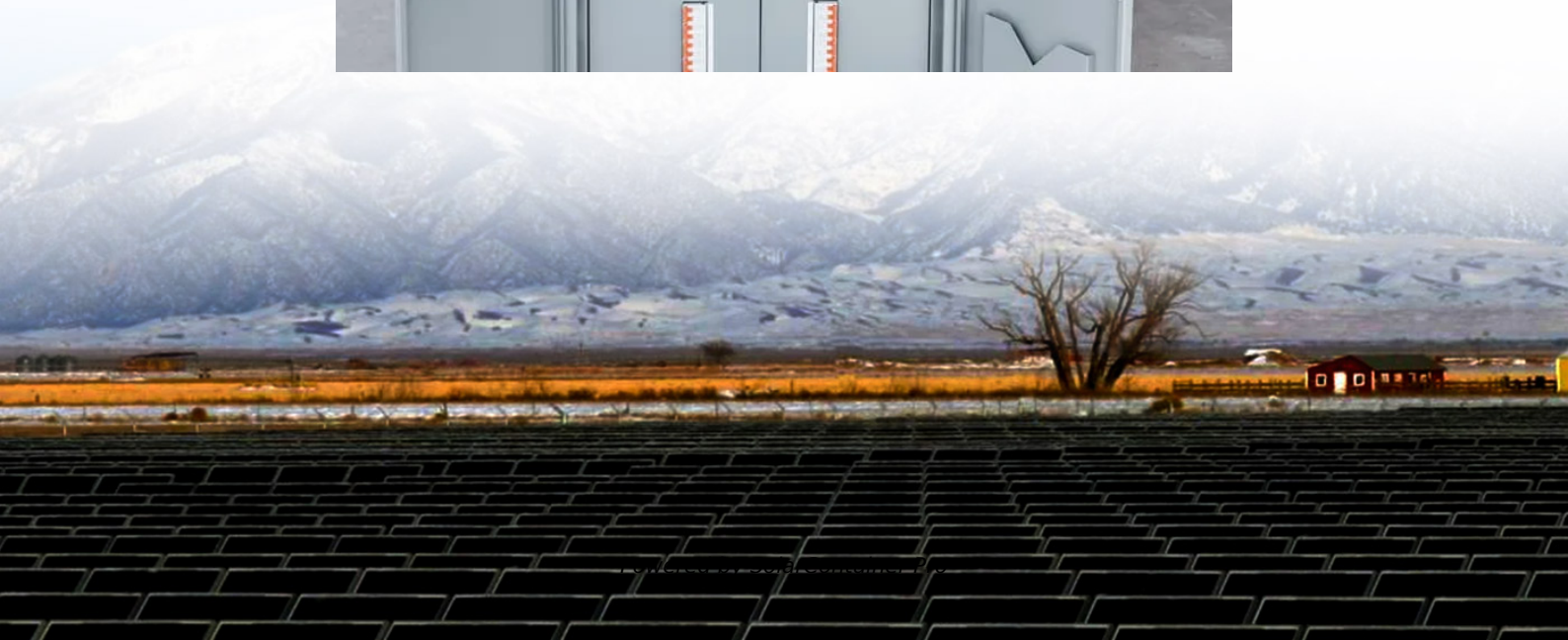


Can lithium iron phosphate batteries be added to BMS





Overview

Yes, LiFePO₄ batteries can be connected in series to increase total voltage while maintaining capacity. Ensure batteries have identical voltage, capacity, and state of charge. Use a Battery Management System (BMS) to prevent imbalances. What does a BMS do in LiFePO₄ batteries?

A battery management system (BMS) in LiFePO₄ batteries makes sure each cell in the battery remains within safe limits. This ensures the batteries stay within their safety specifications and cannot be damaged.

How deep can a lithium iron phosphate battery be discharged?

How deep can a lithium iron phosphate battery be discharged?

The ideal maximum charge for a lithium-ion battery is about 80-90%. This is much more practical in terms of the time and amperage necessary to recharge your battery, and it gives you a margin of error for when things don't go as planned.

What is a battery management system (BMS)?

A Battery Management System (BMS) is an intelligent electronic system that monitors and controls the operation of a battery pack, which can be called the "brain" of the battery. The BMS is responsible for ensuring the safety, efficiency, and longevity of the battery by managing crucial factors like voltage, current, and temperature.

How many amps does a BMS battery use for heating?

The Battery Management System (BMS) in RELiON's LiFePO₄ batteries diverts 5-15 amps to power the heating element, depending on the battery model. For example, the RB20-LT draws 5 amps, while the RB300-LT draws 15 amps.

What is the difference between a lithium battery and a BMS?

Most Lithium batteries only have UL and IEC certifications at the cell level. A



BMS will use either a SSR (made of mosfets), or a mechanical relay. Both SSR and mechanical relays have pros and cons, and both of them have their own voltage and current limitations. With a SSR, mosfets are connected in parallel on the PCB board and the heat sink.

What protects RELiON Lithium batteries from overcharging?

The Battery Management System (BMS) in each battery will protect it from being over-charged. No, you can leave the charger connected to your batteries indefinitely and it will not harm your RELiON Lithium batteries.



Can lithium iron phosphate batteries be added to BMS



Can You Use Lithium Iron Phosphate (LiFePO4) Batteries ...

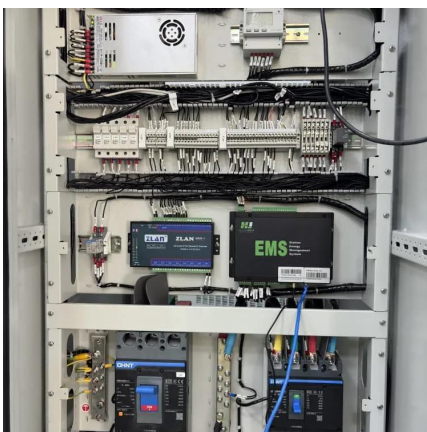
Battery Management System (BMS)? is technically possible, but it is highly discouraged due to significant safety and performance risks. A BMS plays a crucial role in ...

[WhatsApp](#)

Can A Boat Alternator Charge A Lithium Battery? Best Setup For ...

A BMS also ensures balanced charging across battery cells, especially critical in lithium-ion and lithium-iron phosphate (LiFePO4) batteries. Research indicates that a good ...

[WhatsApp](#)



[LiFePO4 chargers can't charge Li-ion batteries safely](#)

A frequent question that arises is whether LiFePO4 (Lithium Iron Phosphate) battery chargers can safely charge Lithium-Ion (Li-ion) batteries. In this article, we will explore ...

[WhatsApp](#)

[Lithium Series, Parallel and Series and Parallel](#)

Lithium battery banks using batteries with built-in Battery Management Systems (BMS) are created by connecting two or more batteries together to support a single application.



[WhatsApp](#)



RELiON LiFePO4 Battery Frequently Asked Questions , RELiON

I want to upgrade to lithium iron phosphate batteries. What do I need to know? What is a BMS? What does it do and where is it located? What size terminals and bolts come on RELiON ...

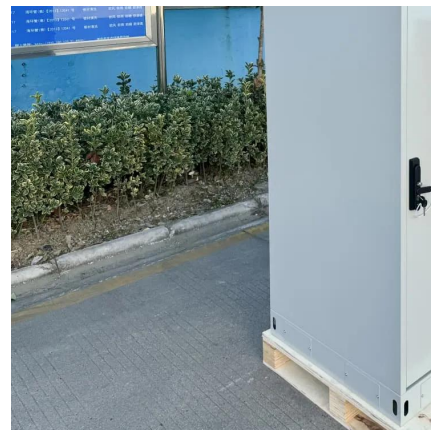
[WhatsApp](#)



Can we connect lead acid and lifepo4 batteries in parallel

Understanding the Risks and Strategies Mixing different types of batteries, such as lead acid and LiFePO4 (Lithium Iron Phosphate), in a parallel setup is a topic that sparks ...

[WhatsApp](#)



Are LiFePO4 Batteries Dangerous? Exploring Risks and Safety ...

LiFePO4 (lithium iron phosphate) batteries are generally safer than other lithium-ion variants due to stable chemistry and higher thermal runaway thresholds. However, risks ...

[WhatsApp](#)

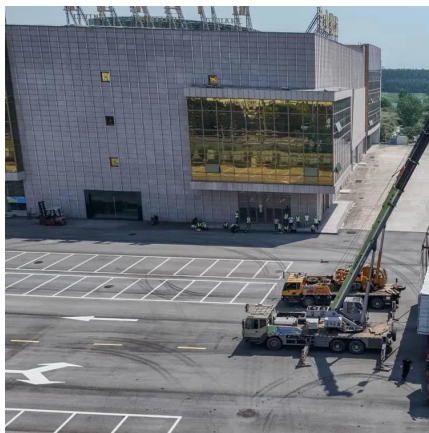
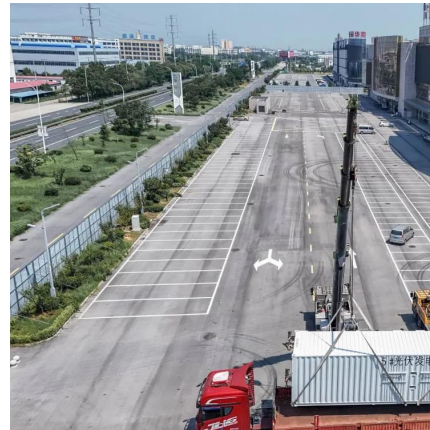




RELiON LiFePO4 Battery Frequently Asked Questions , RELiON

I want to upgrade to lithium iron phosphate batteries. What do I need to know? What is a BMS? What does it do and where is it located? What size terminals and bolts come on RELiON ...

[WhatsApp](#)



RELiON LiFePO4 Battery Frequently Asked Questions , RELiON

General Frequently Asked Questions I want to upgrade to lithium iron phosphate batteries. What do I need to know? What is a BMS? What does it do and where is it located? What size ...

[WhatsApp](#)

What is LiFePO4 Battery Management System (BMS) - LiTime-US

Yes, you can DIY a LiFePO4 lithium battery with a Battery Management System (BMS), but it requires some technical expertise, safety precautions, and the right components.

[WhatsApp](#)



[Lithium iron phosphate batteries: myths BUSTED!](#)

Most LiFePO4 batteries come with a built-in BMS and are often sold as supposed 'drop-in' replacements for lead-acid batteries. However, there really is no such thing as a 'drop ...

[WhatsApp](#)



Top 6 US Manufactures of Lithium Iron Phosphate (LiFePO4) Batteries ...

The LiFePO4 battery industry in the United States is thriving, fueled by the growing adoption of renewable energy and the push for sustainable power solutions. Known for their ...

[WhatsApp](#)



Will My Charger Work With Lithium Iron Phosphate Batteries?

2 days ago · Best Chargers for Lithium Iron Phosphate Batteries NOCO Genius GENPRO10X4 This 10-amp smart charger supports LiFePO4, lead-acid, and lithium-ion batteries. Its ...

[WhatsApp](#)

Contact Us

For catalog requests, pricing, or partnerships, please visit:
<https://www.straightta.co.za>