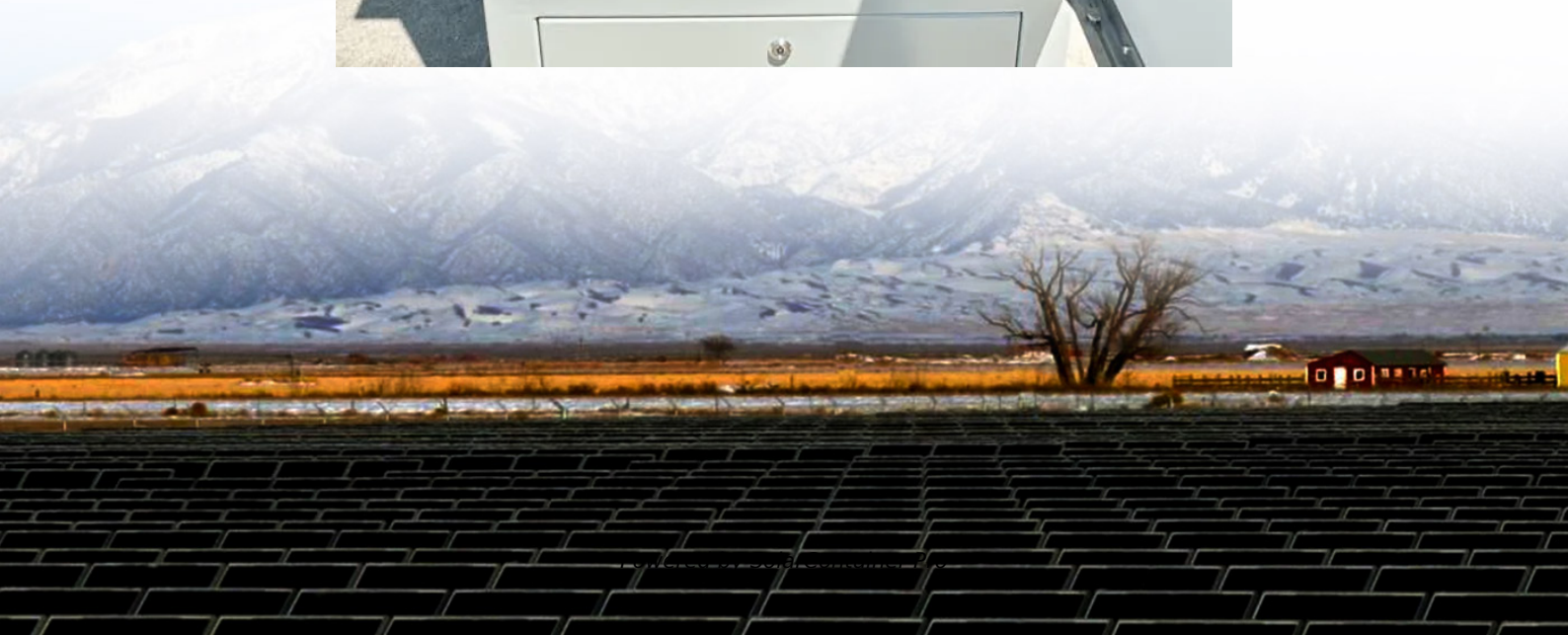


Can lithium battery packs be fully discharged





Overview

Fully discharging a lithium-ion battery can damage its lifespan. To ensure good battery health and electrical performance, keep the charge range between 10% and 90%. Avoid leaving the battery fully discharged or fully charged for long periods. Should lithium ion batteries be discharged?

Avoid Complete Discharge: Avoiding complete discharge significantly benefits lithium-ion batteries. Complete discharge can trigger a protection mechanism that makes it difficult to recharge the battery.

What happens if a lithium battery is discharged below 20% SoC?

At -20°C, discharge below 20% SOC can cause lithium metal plating, permanently reducing capacity by 5-10% per incident. Fully discharging lithium batteries to 0% causes permanent damage. Learn the risks and proper 20-80% charging rule for longer battery life.

Is fully discharging a lithium-ion battery dangerous?

No, discharging a lithium-ion battery fully does not present immediate risks to devices. However, it can lead to long-term damage to the battery itself, affecting its performance and lifespan. When comparing fully discharging a lithium-ion battery to partially discharging it, the key difference lies in battery health.

Do you need to recharge a lithium-ion battery before recharging?

It's essential to understand these key factors to ensure optimal performance and longevity of your batteries. Unlike some older battery technologies, lithium-ion batteries do not suffer from the memory effect. This means you don't need to fully discharge your battery before recharging it.

Does discharging a lithium ion battery shorten the life of a battery?

Studies show that regularly discharging a lithium-ion battery below 20% can significantly shorten its life. Research from the Battery University indicates



that the cycle count can be reduced when batteries are fully depleted.
Reduced Performance: Fully discharging a battery leads to reduced performance.

Should Li-ion batteries be deep discharged?

It is well known that Li-Ion batteries should not be deep discharged. But sometimes they do discharge deeply. Is it OK for the device to remain in such state for a long time (and recharge again only when the device is needed again after a year) or it should be charged back as soon as possible?

In other words, the battery was discharged deeply.



Can lithium battery packs be fully discharged



Reviving Your Lithium Battery: A Step-by-Step Guide to Resetting

Important Note: Before attempting to reset your lithium battery, ensure you have the necessary safety precautions in place, including protective gloves, safety glasses, and a ...

[WhatsApp](#)

Do Battery Packs Go Bad If They Drain? Insights on Lifespan, ...

A deeply discharged battery can swell or leak, posing both fire and health hazards. Regular maintenance and monitoring of battery levels can help mitigate these risks. In ...

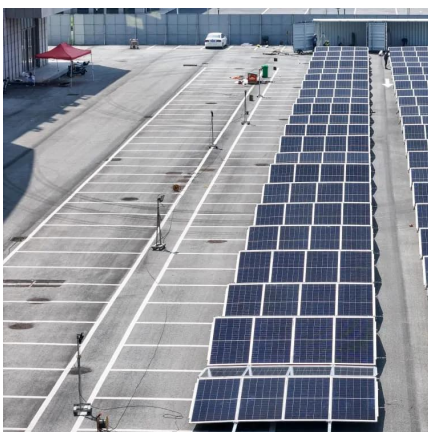
[WhatsApp](#)



Best Practices for Charging, Maintaining, and Storing Lithium ...

Properly maintaining and caring for your lithium-ion batteries can mitigate the effects of battery aging. By implementing storage guidelines, charging practices, and avoiding excessive ...

[WhatsApp](#)



Is It Bad to Fully Discharge a Lithium-Ion Battery? Consequences ...

Fully discharging a lithium-ion battery can damage its lifespan. To ensure good battery health and electrical performance, keep the



charge range between 10% and 90%.

[WhatsApp](#)



Everything You Need to Know About Lithium Battery Charging ...

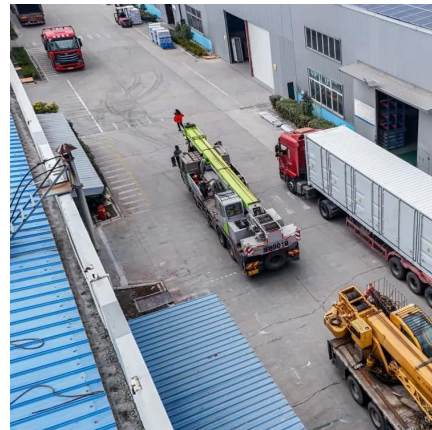
Conclusion Lithium-ion batteries are a significant advancement over earlier battery types. Lithium-ion batteries charge quicker, last longer, and offer a higher power density than ...

[WhatsApp](#)

Proper Storage, Charging and Use of Lithium-ion Batteries

The lifespan of a lithium-ion battery is defined by its charging cycles - the number of times it can be charged and discharged. According to Popular Mechanics, most lithium ...

[WhatsApp](#)



8 Reasons Why Fully Discharging Lithium Batteries

3 days ago· Whether you're managing backup power or driving your EV through its final mile, fully discharging a lithium battery can lead to reduced performance, long-term degradation, and ...

[WhatsApp](#)





5 Reasons Why Lithium Batteries Should Not Be Fully Discharged

Leaving lithium batteries without charging for a long time can cause them to enter a state of "deep discharge". This means that the battery voltage drops below safe levels and permanently ...

[WhatsApp](#)



[Can a Completely Dead Lithium Battery Be Recharged](#)

Yes, but with major caveats--a fully dead lithium battery often can't be fully restored. Imagine your phone, laptop, or electric vehicle refusing to power on despite hours of ...

[WhatsApp](#)

[Can a Lithium Battery be Fully Discharged? Yes & No](#)

That is why the Battelborn, Jackery, Bluetti and Talentcell specs say that their batteries can be fully discharged without damaging them. So, yes you can use the full capacity ...

[WhatsApp](#)



[Is it Bad to Fully Discharge a Lithium-ion Battery](#)

Lithium-ion battery packs should not be fully depleted and recharged frequently (deep-cycling). Utilizing only 20 or 30 percent of the battery's capacity before recharging significantly improves ...

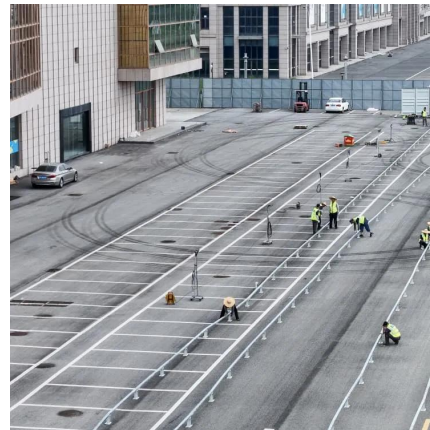
[WhatsApp](#)



A Dead Lithium Battery: How to Revive It and Get It Charging Again

A lithium-ion battery can die due to various reasons such as deep discharging, physical damage, high temperatures, and manufacturing defects. When a lithium-ion battery is ...

[WhatsApp](#)



[Is It OK to Fully Discharge a Lithium-Ion Battery?](#)

No, it is not advisable to fully discharge a lithium-ion battery. Fully discharging can lead to capacity degradation and potential damage to the battery. It is recommended to avoid ...

[WhatsApp](#)

Contact Us

For catalog requests, pricing, or partnerships, please visit:
<https://www.straighta.co.za>