

Can lithium batteries be directly converted to 220V using an inverter





Overview

No, a standard 12V car battery can't directly supply 220V. But here's the twist: with a critical device called an inverter, you can bridge that gap safely. How to choose a lithium battery inverter?

So, make sure your inverter can handle the voltage range of your specific lithium battery. Another important aspect is the charging current capacity of the inverter. Since lithium batteries require a higher charging current than other types, you need an inverter that can provide enough power for efficient and effective charging.

Can a solar inverter be used with a lithium battery?

Integrating a solar inverter with a lithium battery can take your renewable energy setup to the next level. This combination allows for better energy storage, improved efficiency, and greater resilience during power outages. LiFePO4 batteries are particularly well-suited for solar applications because of their thermal stability and long cycle life.

What is a lithium ion battery for a home inverter?

Lithium-ion batteries offer a more consistent discharge rate, ensuring that your inverter operates smoothly and efficiently. A lithium-ion battery for a home inverter can significantly enhance your home's energy storage capabilities.

How do I install a lithium battery for inverter?

Understanding your inverter type is crucial to avoid potential issues down the line. The first step in installing a lithium battery for inverter with an existing inverter is to assess your current setup. This includes evaluating the condition of your inverter and ensuring it meets the necessary specifications for lithium-ion batteries.

Which battery should I use for my inverter?



When it comes to powering your inverter, there are a few alternative options to consider aside from lithium batteries. While lithium batteries have gained popularity due to their numerous advantages, they may not be the right choice for everyone. One alternative option is lead-acid batteries.

Can a lithium battery be used with a sine wave inverter?

Some examples include pure sine wave and modified sine wave inverters. These inverters may work better with lithium-ion batteries. Understanding your inverter type is crucial to avoid potential issues down the line. The first step in installing a lithium battery for inverter with an existing inverter is to assess your current setup.



Can lithium batteries be directly converted to 220V using an inverter



[Charging LiFePo4 with generator , Forest River Forums](#)

If you've plugged your rig into the generator AND you've got the converter set to charge LiOn batteries, the converter should take care of charging the batteries correctly and ...

[WhatsApp](#)

Beginner's Guide to Power Inverters

Using Batteries with your Power Inverter As well as using the right appliances with your inverter, you also need to make sure that your battery is the correct size. Different batteries have ...

[WhatsApp](#)



[Do You Need a Special Inverter for Lithium Batteries?](#)

Selecting the right inverter for your lithium battery system involves thoroughly assessing various technical and practical factors. First and foremost, it is essential to align the ...

[WhatsApp](#)



Understanding Battery Capacity and Inverter Compatibility

How Long Can a 100 Ah Battery Run a 1000W Inverter? To estimate how long a battery can run an inverter, we need to consider the power draw



and the battery's capacity. ...

[WhatsApp](#)



Compatibility of Lithium-Ion Batteries with Existing Inverters

While many inverters can be adapted to work with lithium-ion batteries, it's essential to check the specifications and compatibility of your particular inverter model.

[WhatsApp](#)



Importance of Compatibility Between Inverter and Lithium Battery

Lithium batteries are known for their longevity, but their lifespan can be significantly shortened if paired with an incompatible inverter. Inverters that are not designed to work with ...

[WhatsApp](#)



Correct method for wiring a 12V Battery, Inverter, and Charger?

This is my first DIY project using a LifePo4 battery. I purchased a LiTime 12V 230Ah Battery, 12V 2000W Inverter, and 12V 20A Lithium Battery Charger (14.6V). I'd like to ...

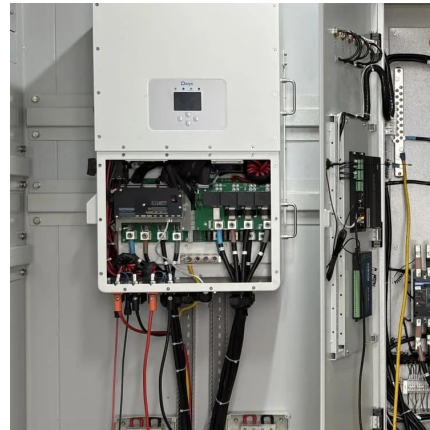
[WhatsApp](#)



[Can Lithium Batteries Work With Any Type of Inverter?](#)

The short answer is no - proper inverter matching is crucial for optimal performance and safety. Let's examine the key compatibility factors for lithium battery and LiFePO4 battery ...

[WhatsApp](#)



Powerful Lithium Battery Inverter: 12V to 220V Conversion Made ...

Transform 12V into 220V with this powerful and efficient Lithium Battery Inverter. A must-have tool for home, travel, and outdoor use! Convenient, practical, and easy to use.

[WhatsApp](#)



Making an Online Uninterruptible Power Supply (UPS) using a Lithium

I've been thinking about making an online UPS with a LiFePO4 battery. "Online" means the load is running on the inverter even when mains power is available. To show the ...

[WhatsApp](#)



The Ultimate Guide to Wiring a Power Inverter: Step-by-Step ...

A power inverter is a device that converts DC (direct current) power from a battery or solar panel into AC (alternating current) power that can be used to run household appliances or other ...

[WhatsApp](#)



Contact Us

For catalog requests, pricing, or partnerships, please visit:
<https://www.straightta.co.za>