

Can an 18V solar panel be connected to a 12V water pump inverter





Overview

While it's technically possible for you to connect a solar panel directly to an AC or DC water pump, it's not advisable to do so. Solar panels' irregular output can damage the pump over time, shortening its lifespan. This is especially true if the pump is designed for AC voltage. Can a 12V pump run on a solar panel?

Buy a small, low power 12V pump. Connect it straight to the panel. It'll run most of the time when the sun is shining. It probably will work just fine like JRE says. But there could be a slight chance that the panel will over-volt the motor if the motor does not need the whole 10 Watts. @jigneshsorathiya that one won't work, it's for AC power.

Do you need an inverter for a solar pump?

Because solar panels produce DC power, you'd need an inverter to convert it into AC, the type of electricity that household devices utilize. Moreover, when it comes to pumps, most of them operate at 12V or 14V. This means that for them to function properly, multiple solar panels must be connected.

Can a solar panel be connected to a water pump?

You could connect a solar panel directly to a water pump. It is not a good idea, though. The erratic pulse of electricity produced by the solar panel will burn out the pump at some point. That process can take a few seconds to a few years. The point is that connecting solar energy directly to a water pump shortens the life of the pump.

Do I need a DC water pump if I have a solar panel?

A 12v 10w solar panel will create DC power. You need a DC water pump if you want to run it directly from your solar panel. Also, there is chance your solar panel might create more than 12v power, in which your water pump will get damage in long run.

Can a solar inverter damage an AC pump?



So, to avoid damaging your pumps and panels due to a direct connection, you can use: Solar Inverter: Use it for connecting an AC pump to a solar panel. Since solar panels generate DC voltage, connecting them to AC pumps directly can cause rapid burnouts. A solar inverter prevents this.

Will a 12V inverter work with a solar panel?

"12V panel" means 18 volts. If it is designed to work with 12V panels it will work with your panel. Note that this inverter requires a battery. That inverter needs batteries, a charge controller in addition to the solar panels.



Can an 18V solar panel be connected to a 12V water pump inverter



How To Pair Solar Panels with Your Pump Inverter for Optimal ...

Here is the complete guide on how you can pair your solar panels with a pump inverter to ensure good results. This technology drastically changes the way they interact with pump inverters, ...

[WhatsApp](#)

Can charge my battery bank with 24v and use with 12v old inverter

Edit = deleted my diagram because batteries are not connected in series. I will reupload a new correct diagram. Hey Guys, I am new here. I know it may be a dumb question ...

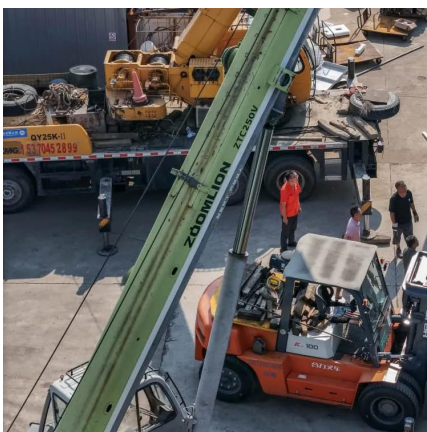
[WhatsApp](#)



How To Connect A Solar Panel To A Water Pump (Step By Step)

Can I connect a solar panel directly to a water pump? You could connect a solar panel directly to a water pump. It is not a good idea, though. The erratic pulse of electricity ...

[WhatsApp](#)



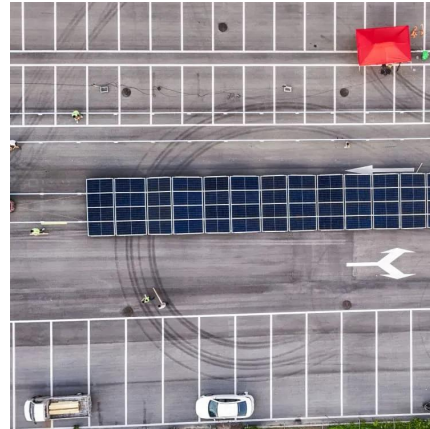
Can I have my DC water pump run off solar panel during day?

Yes you can but since the pump wasn't designed for it, its hard to tell you how well it will work. you need a charge controller (10 to 20amp) to



regulate the voltage from the panel ...

[WhatsApp](#)



Solar module directly attached to a DC water pump? : r/solar

Just 2 solar panels in series to get the voltage up above 24 volts and direct connected to the pump wires. It's a portable set up to provide garden hose amounts of water at a distance from ...

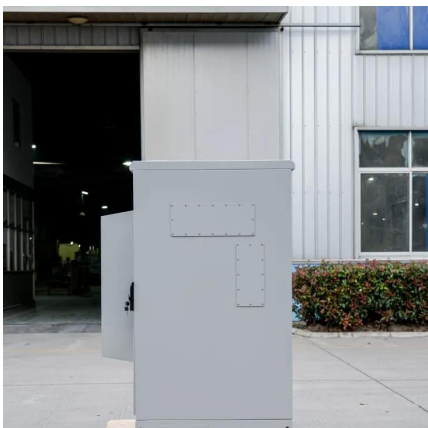
[WhatsApp](#)



[Powering a 12v device directly from a solar panel](#)

I have a 200w solar panel with 22 volts, open circuit. I have a DROK brand buck converter rated for an input of 8-22v with an adjustable potentiometer that allows an output ...

[WhatsApp](#)



[Can I Connect a Solar Panel Directly to a Water Pump?](#)

Yes, you can connect a solar panel to a water pump, but it requires specific components to ensure safe and efficient operation. Don't leave yet--understanding system design is key to long-term ...

[WhatsApp](#)



5+ Ways of Connecting Solar Panel to a Water Pump (For ...

Yes, it is possible to connect multiple solar panels to a single water pump. By connecting panels in parallel or series configurations, you can increase the overall power ...

[WhatsApp](#)



[can a 18v solar panel charge a 12v battery](#)

Conclusion In conclusion, an 18V solar panel can indeed charge a 12V battery. However, it is crucial to use a charge controller to optimize charging performance and protect the battery ...

[WhatsApp](#)

[12v battery charging from an 18v portable solar panel?](#)

Discuss remote solar applications for homes, cabins, RV and boats. If you have a question on equipment for an off grid system, such as charge controllers or inverters, then post ...

[WhatsApp](#)



Contact Us

For catalog requests, pricing, or partnerships, please visit:
<https://www.straightta.co.za>