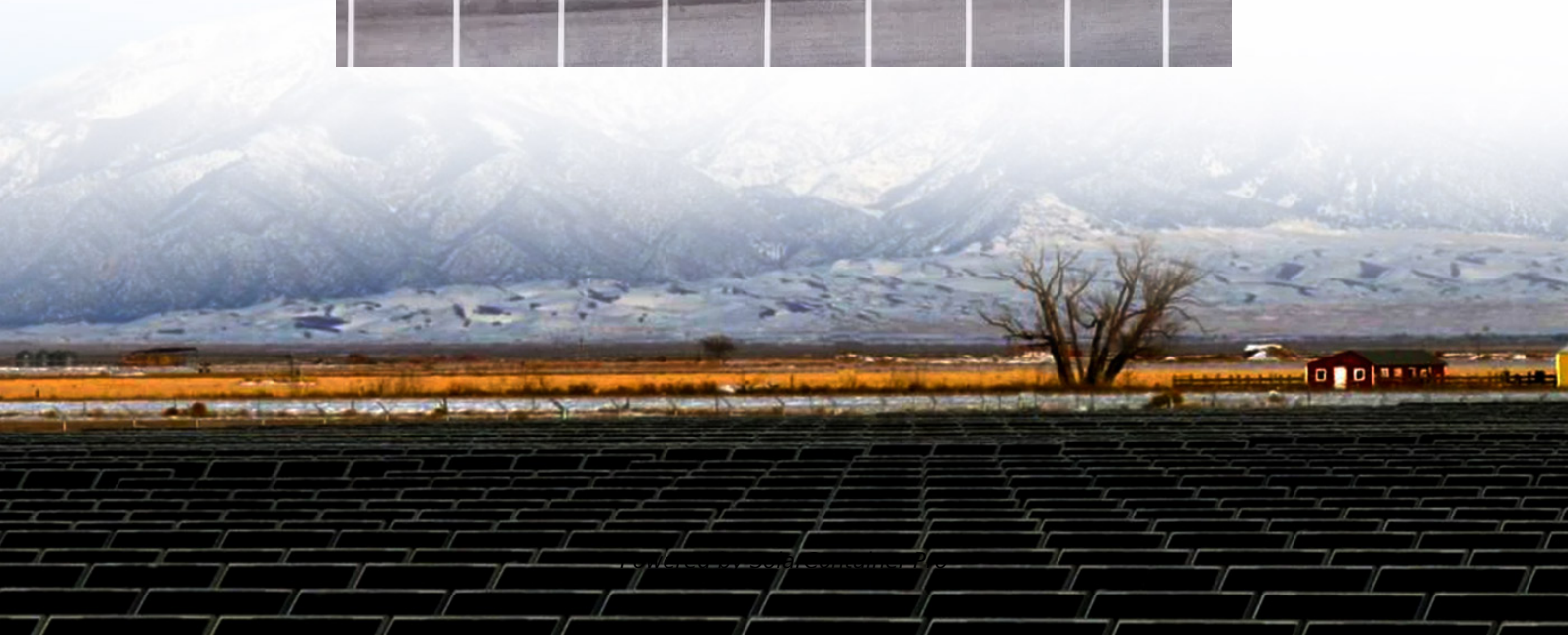


Can a 6kW photovoltaic system be connected to a 5kW inverter





Overview

Generally, an inverter can handle up to 30% more power than its rating. Given that solar panels do not always produce at peak power, this should not be an issue.

There are many ways to calculate inverter sizes, but we will stick to the simplest methods. These apply to any solar power system and any inverter setup. There are two basic formulas:.

Before you get too excited to try this, there are some things you need to consider. Overclocking risks voiding the inverter and solar panel warranty. While most inverters can handle oversizing, not all manufacturers support or recommend this. If you want to add.

Solar panel watt ratings are based on their maximum possible output. But these solar panels incur losses, so they rarely reach full capacity. A solar panel rated at 250 watts means that is the highest output it can provide. But due to cloudy skies, module efficiency.

Inverter string size refers to the number of solar panels that can be wired on a single inverter input. A group of solar panels wired in one input is called a panel string. Most string inverters.

How many solar panels can I install with a 5kw inverter?

So for all practical purposes the 5kW inverter size limit applies to most single phase households. But even with a 5kW 'system size limit' you may well be able to install up to 10kW of panels! How?

By oversizing your solar panel array relative to your inverter as described here.

How much kW does a solar inverter produce?

Plenty of factors will reduce the kW output of the solar panels including:- high temperatures. So 5kW of solar panels will only occasionally be delivering 5 kW to the inverter. But 6.6kW of solar panels will reach or exceed 5kW of DC solar power output more regularly and for more hours in a day.



What size solar inverter do I Need?

However, oversizing the array is a common practice for maximum efficiency, and a 6.6kW solar PV system typically comes with a 5kW inverter. The typical climate and sunlight available throughout the day will impact the ideal inverter capacity. The positioning of your solar PV system will also affect the solar inverter size you need to purchase.

How much power can a 5kw inverter handle?

It can only handle so much at once! For example, a 5kW inverter can support up to 5,000 watts of combined panel power. Overload it, and you risk overheating or cutting off power—definitely not what you want on a sunny day. Panel Wattage: Each panel packs its own punch, measured in watts.

Is there a difference between inverter size and solar panel capacity?

However, this should always be within the recommended ratio. This is the reason why you may see a 'mismatch' between inverter size and solar panel capacity – for example, a 6.6kW system advertised with a 5kW inverter.

Can you connect solar panels to an inverter?

When it comes to connecting solar panels to an inverter, there's a bit more to consider than simply adding panels until you run out of roof space. Stack on too many, and you risk overloading your inverter; too few, and you're not getting the most out of your setup.



Can a 6kW photovoltaic system be connected to a 5kW inverter



Basic Question: Can you consume 10kw on an 5kw hybrid inverter?

Example: 10kw consumption load on a 5kw inverter. Will that overload the inverter or are the remaining 5kw just coming from the grid in the end without overloading the inverter? ...

[WhatsApp](#)

[Why is my inverter only 5kW but my panels are 6.6kW?](#)

So 5kW of solar panels will only occasionally be delivering 5 kW to the inverter. But 6.6kW of solar panels will reach or exceed 5kW of DC solar power output more regularly ...

[WhatsApp](#)



Understanding Solar Inverter Sizes: What Size Do You Need?

For instance, a 5kW inverter can be used for a solar PV system up to 6.6kW in capacity. This regulation is set by Australia's Clean Energy Council to ensure all solar ...

[WhatsApp](#)

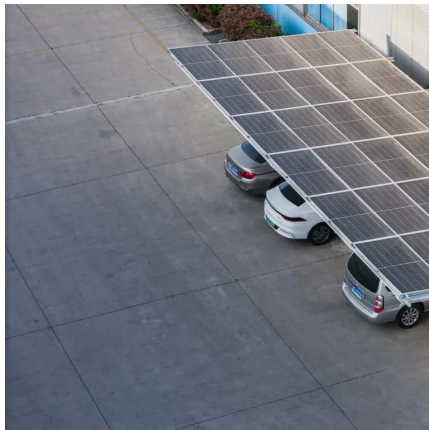
US Pure Sine Wave Solar Inverter 3KW 3.6kw 6.5kw off Grid Power System

(1). With dual activation function of lithium battery, Power saving mode available to reduce no-load loss. (2). Anti-countercurrent grid-



connected function (photovoltaic hybrid power supply),grid ...

[WhatsApp](#)



[What Size Solar Inverter Do You Need for Solar Panels?](#)

Regulations allow oversizing a solar array up to a ratio of 1.33, meaning a 5kW inverter can support up to a 6.6kW system. This limit ensures that solar installations effectively contribute ...

[WhatsApp](#)

How Many Solar Panels Can I Connect to an Inverter? A ...

This guide will discuss the factors that determine how many solar panels can be connected to an inverter, such as inverter specifications, wiring configurations, and the use of charge controllers.

[WhatsApp](#)



I've been told my maximum solar system size is 5kW. Is that ...

The system size limit is almost always based on the rated inverter 'AC output'. So you can usually add 6.6kW of panels to a 5kW inverter and still respect the 5kW system size limit.

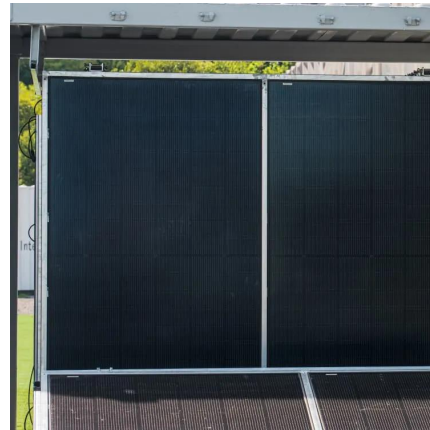
[WhatsApp](#)



5KWH Hybrid Solar System Complete Kit Grid Home Solar Power System

??All-in-one Complete Kit?Inverter (built in MPPT controller), solar panels, solar batteries are all-in-one complete kit. This complete hybrid solar power systems allow you to be ...

[WhatsApp](#)



Contact Us

For catalog requests, pricing, or partnerships, please visit:
<https://www.straighta.co.za>